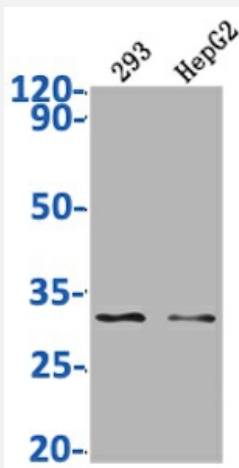


RecomAb™

NDUFS3 recombinant monoclonal antibody, clone 1H12

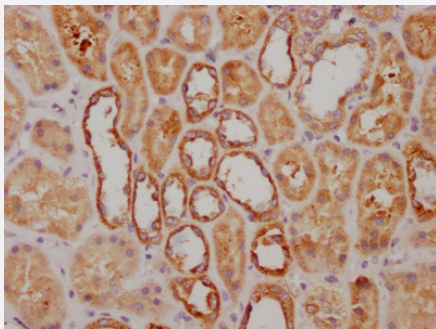
Catalog # RAB04122 Size 100 uL

Applications



Western Blot

Western Blot analysis of Lane 1: 293 whole cell lysate; Lane 2: HepG2 whole cell lysate.



Immunohistochemistry

Immunohistochemistry image of NDUFS3 recombinant monoclonal antibody, clone 1H12 diluted at 1:100 and staining in paraffin-embedded human kidney tissue performed on a Leica Bond™ system.

Specification

Product Description	Rabbit recombinant monoclonal antibody raised against human NDUFS3.
Antibody Species	Rabbit
Immunogen	Original antibody is raised against recombinant protein corresponding to full length human NDUFS3.
Reactivity	Human

Form	Liquid
Purification	Affinity-chromatography
Isotype	IgG
Recommend Usage	ELISA Immunohistochemistry (1:50-1:200) Western Blot (1:500-1:5000) The optimal working dilution should be determined by the end user.
Storage Buffer	In PBS, pH7.4 (150 mM NaCl, 50% glycerol and 0.02% sodium azide)
Storage Instruction	Store at -20°C or -80°C. Aliquot to avoid repeated freezing and thawing.
Note	This product contains sodium azide: a POISONOUS AND HAZARDOUS SUBSTANCE which should be handled by trained staff only.

Applications

- Western Blot

Western Blot analysis of Lane 1: 293 whole cell lysate; Lane 2: HepG2 whole cell lysate.

- Immunohistochemistry

Immunohistochemistry image of NDUFS3 recombinant monoclonal antibody, clone 1H12 diluted at 1:100 and staining in paraffin-embedded human kidney tissue performed on a Leica BondTM system.

- Enzyme-linked Immunoabsorbent Assay

Gene Info — NDUFS3

Entrez GeneID	4722
Protein Accession#	O75489
Gene Name	NDUFS3
Gene Alias	-
Gene Description	NADH dehydrogenase (ubiquinone) Fe-S protein 3, 30kDa (NADH-coenzyme Q reductase)
Omim ID	256000 603846
Gene Ontology	Hyperlink

Gene Summary

This gene encodes one of the iron-sulfur protein (IP) components of mitochondrial NADH:ubiquinone oxidoreductase (complex I). Mutations in this gene are associated with Leigh syndrome resulting from mitochondrial complex I deficiency

Other Designations

-

Pathway

- [Metabolic pathways](#)
- [Oxidative phosphorylation](#)

Disease

- [Alzheimer disease](#)
- [Cognition](#)