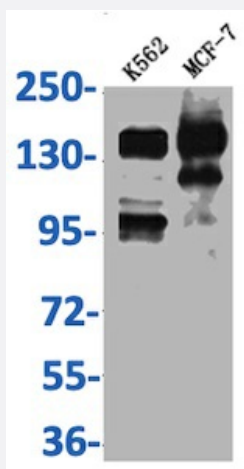


RecomAb™

SIN3A recombinant monoclonal antibody, clone 10G3

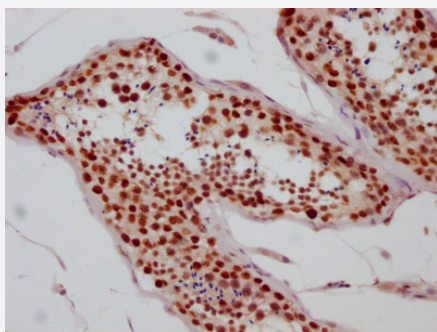
Catalog # RAB04113 Size 100 uL

Applications



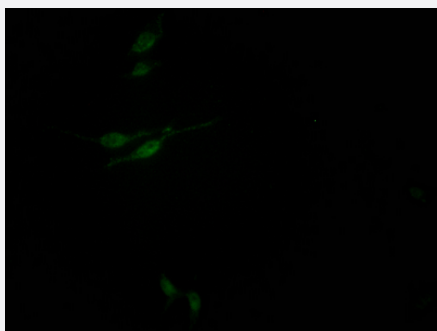
Western Blot

Western Blot analysis of Lane 1: K562 whole cell lysate; Lane 2: MCF-7 whole cell lysate.



Immunohistochemistry

Immunohistochemistry image of SIN3A recombinant monoclonal antibody, clone 10G3 diluted at 1:100 and staining in paraffin-embedded human testis tissue performed on a Leica Bond™ system.



Immunofluorescence

Immunofluorescence staining of HepG2 Cells with SIN3A recombinant monoclonal antibody, clone 10G3 at 1:50, counter-stained with DAPI.

Specification

Product Description	Rabbit recombinant monoclonal antibody raised against human SIN3A.
Antibody Species	Rabbit
Immunogen	Original antibody is raised against recombinant protein corresponding to full length human SIN3A.
Reactivity	Human
Form	Liquid
Purification	Affinity chromatography
Isotype	IgG
Recommend Usage	ELISA Immunohistochemistry (1:50-1:200) Immunofluorescence(1:20-1:200) Western Blot (1:500-1:5000) The optimal working dilution should be determined by the end user.
Storage Buffer	In PBS, pH7.4 (150mM NaCl, 50% glycerol and 0.02% sodium azide)
Storage Instruction	Store at -20 °C or -80 °C. Aliquot to avoid repeated freezing and thawing.
Note	This product contains sodium azide: a POISONOUS AND HAZARDOUS SUBSTANCE which should be handled by trained staff only.

Applications

- Western Blot

Western Blot analysis of Lane 1: K562 whole cell lysate; Lane 2: MCF-7 whole cell lysate.

- Immunohistochemistry

Immunohistochemistry image of SIN3A recombinant monoclonal antibody, clone 10G3 diluted at 1:100 and staining in paraffin-embedded human testis tissue performed on a Leica BondTM system.

- Immunofluorescence

Immunofluorescence staining of HepG2 Cells with SIN3A recombinant monoclonal antibody, clone 10G3 at 1:50, counter-stained with DAPI.

- Enzyme-linked Immunoabsorbent Assay

Gene Info — SIN3A

Entrez GeneID	25942
Protein Accession#	Q96ST3
Gene Name	SIN3A
Gene Alias	DKFZp434K2235, FLJ90319, KIAA0700
Gene Description	SIN3 homolog A, transcription regulator (yeast)
Omim ID	607776
Gene Ontology	Hyperlink
Gene Summary	The protein encoded by this gene is a transcriptional regulatory protein. It contains paired amphipathic helix (PAH) domains, which are important for protein-protein interactions and may mediate repression by the Mad-Max complex. [provided by RefSeq]
Other Designations	OTTHUMP00000183517 OTTHUMP00000183518 SIN3 homolog A, transcriptional regulator transcriptional co-repressor Sin3A transcriptional regulator, SIN3A