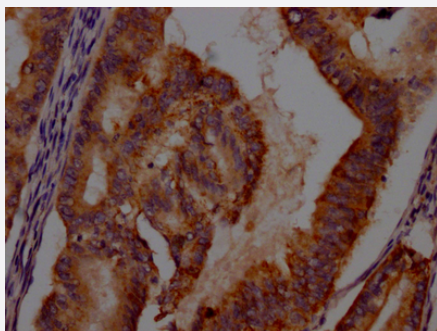


RecomAb™

IDO1 recombinant monoclonal antibody, clone 9E5

Catalog # RAB04103 Size 100 uL

Applications



Immunohistochemistry

Immunohistochemistry image of IDO1 recombinant monoclonal antibody, clone 9E5 diluted at 1:100 and staining in paraffin-embedded human endometrial cancer performed on a Leica Bond™ system.

Specification

| | |
|----------------------------|--|
| Product Description | Rabbit recombinant monoclonal antibody raised against human IDO1. |
| Antibody Species | Rabbit |
| Immunogen | Original antibody is raised against recombinant protein corresponding to full length human IDO1. |
| Reactivity | Human |
| Form | Liquid |
| Purification | Affinity chromatography |
| Isotype | IgG |
| Recommend Usage | ELISA Immunohistochemistry (1:50-1:200) The optimal working dilution should be determined by the end user. |
| Storage Buffer | In PBS, pH7.4 (150mM NaCl, 50% glycerol and 0.02% sodium azide) |
| Storage Instruction | Store at -20 °C or -80 °C. Aliquot to avoid repeated freezing and thawing. |

Note

This product contains sodium azide: a POISONOUS AND HAZARDOUS SUBSTANCE which should be handled by trained staff only.

Applications

- Immunohistochemistry

Immunohistochemistry image of IDO1 recombinant monoclonal antibody, clone 9E5 diluted at 1:100 and staining in paraffin-embedded human endometrial cancer performed on a Leica Bond™ system.

- Enzyme-linked Immunoabsorbent Assay

Gene Info — IDO1

| | |
|--------------------|--|
| Entrez GeneID | 3620 |
| Protein Accession# | P14902 |
| Gene Name | IDO1 |
| Gene Alias | CD107B, IDO, INDO |
| Gene Description | indoleamine 2,3-dioxygenase 1 |
| Omim ID | 147435 |
| Gene Ontology | Hyperlink |
| Gene Summary | Gamma-interferon (IFNG; MIM 147570) has an antiproliferative effect on many tumor cells and inhibits intracellular pathogens such as Toxoplasma and Chlamydia, at least partly because of the induction of indoleamine 2,3-dioxygenase (INDO; EC 1.13.11.52). This enzyme catalyzes the degradation of the essential amino acid L-tryptophan to N-formyl-kynurenine.[supplied by OMIM] |
| Other Designations | indole 2,3-dioxygenase indoleamine-pyrrole 2,3 dioxygenase |

Pathway

- [Metabolic pathways](#)
- [Tryptophan metabolism](#)

Disease

- [Hepatitis C](#)
- [Multiple Sclerosis](#)
- [Pre-Eclampsia](#)