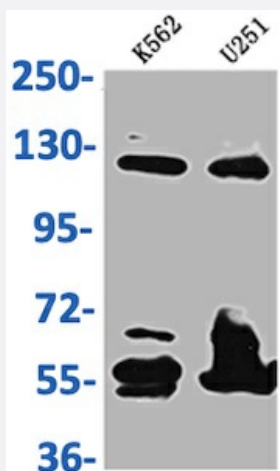


RecomAb™

BUB1B recombinant monoclonal antibody, clone 7H4

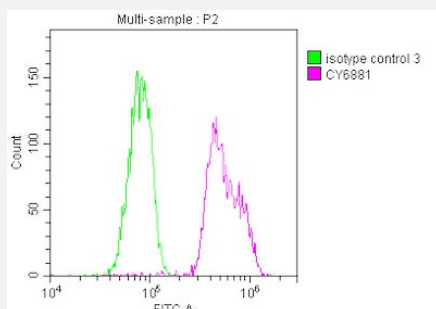
Catalog # RAB04090 Size 100 uL

Applications



Western Blot

Western Blot analysis of Lane 1: K562 whole cell lysate; Lane 2: U-251 whole cell lysate.



Flow Cytometry

Overlay histogram showing HeLa cells stained with BUB1B recombinant monoclonal antibody, clone 7H4 (red line) at 1:50.

Specification

Product Description	Rabbit recombinant monoclonal antibody raised against human BUB1B.
Antibody Species	Rabbit
Immunogen	Original antibody is raised against recombinant protein corresponding to full length human BUB1B.
Reactivity	Human

Form	Liquid
Purification	Affinity chromatography
Isotype	IgG
Recommend Usage	ELISA Flow Cytometry (1:20-1:200) Western Blot (1:500-1:5000) The optimal working dilution should be determined by the end user.
Storage Buffer	In PBS, pH7.4 (150mM NaCl, 50% glycerol and 0.02% sodium azide)
Storage Instruction	Store at -20 °C or -80 °C. Aliquot to avoid repeated freezing and thawing.
Note	This product contains sodium azide: a POISONOUS AND HAZARDOUS SUBSTANCE which should be handled by trained staff only.

Applications

- Western Blot

Western Blot analysis of Lane 1: K562 whole cell lysate; Lane 2: U-251 whole cell lysate.

- Enzyme-linked Immunoabsorbent Assay

- Flow Cytometry

Overlay histogram showing Hela cells stained with BUB1B recombinant monoclonal antibody, clone 7H4 (red line) at 1:50.

Gene Info — BUB1B

Entrez GeneID	701
Protein Accession#	O60566
Gene Name	BUB1B
Gene Alias	BUB1beta, BUBR1, Bub1A, MAD3L, SSK1, hBUBR1
Gene Description	budding uninhibited by benzimidazoles 1 homolog beta (yeast)
Omim ID	114500 602860
Gene Ontology	Hyperlink

Gene Summary

This gene encodes a kinase involved in spindle checkpoint function. The protein has been localized to the kinetochore and plays a role in the inhibition of the anaphase-promoting complex/cyclosome (APC/C), delaying the onset of anaphase and ensuring proper chromosome segregation. Impaired spindle checkpoint function has been found in many forms of cancer. [provided by RefSeq]

Other Designations

BUB1 budding uninhibited by benzimidazoles 1 homolog beta|MAD3/BUB1-related protein kinase|budding uninhibited by benzimidazoles 1, beta

Pathway

- [Cell cycle](#)

Disease

- [Adenocarcinoma](#)
- [Breast cancer](#)
- [Breast Neoplasms](#)
- [Carcinoma](#)
- [Esophageal Neoplasms](#)
- [Genetic Predisposition to Disease](#)
- [Kidney Failure](#)
- [Lung Neoplasms](#)
- [Pulmonary Disease](#)