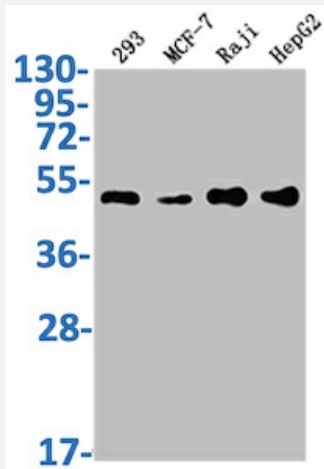


RecomAb™

# PABPN1 recombinant monoclonal antibody, clone 6C3

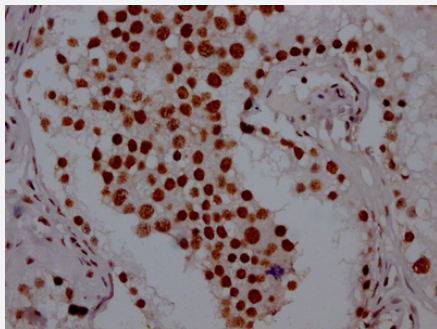
Catalog # RAB04077      Size 100 uL

## Applications



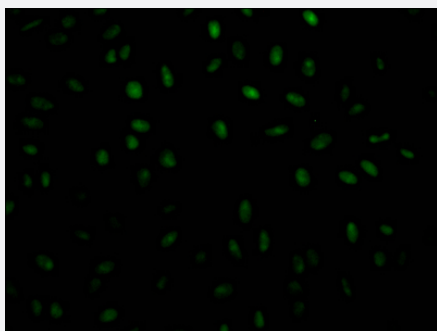
### Western Blot

Western Blot analysis of Lane 1: 293 whole cell lysate; Lane 2: MCF-7 whole cell lysate; Lane 3: Raji whole cell lysate; Lane 4: HepG2 whole cell lysate.



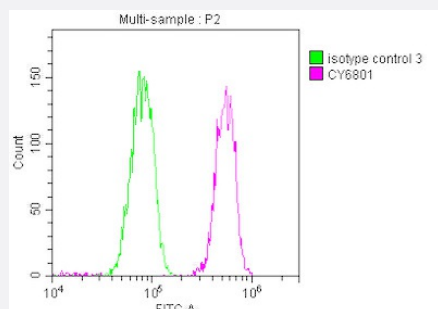
### Immunohistochemistry

Immunohistochemistry image of PABPN1 recombinant monoclonal antibody, clone 6C3 diluted at 1:100 and staining in paraffin-embedded human testis tissue performed on a Leica Bond™ system.



### Immunofluorescence

Immunofluorescence staining of HeLa Cells with PABPN1 recombinant monoclonal antibody, clone 6C3 at 1:50, counter-stained with DAPI.



## Flow Cytometry

Overlay histogram showing Hela cells stained with PABPN1 recombinant monoclonal antibody, clone 6C3 (red line) at 1:50.

## Specification

|                            |  |
|----------------------------|--|
| <b>Product Description</b> | Rabbit recombinant monoclonal antibody raised against human PABPN1.  |
| <b>Antibody Species</b>    | Rabbit   |
| <b>Immunogen</b>           | Original antibody is raised against recombinant protein corresponding to full length human PABPN1.   |
| <b>Reactivity</b>          | Human  |
| <b>Form</b>                | Liquid   |
| <b>Purification</b>        | Affinity chromatography  |
| <b>Isotype</b>             | IgG  |
| <b>Recommend Usage</b>     | ELISA<br>Flow Cytometry (1:20-1:200)<br>Immunohistochemistry (1:50-1:200)<br>Immunofluorescence(1:20-1:200)<br>Western Blot (1:500-1:5000)<br>The optimal working dilution should be determined by the end user. |
| <b>Storage Buffer</b>      | In PBS, pH7.4 (150mM NaCl, 50% glycerol and 0.02% sodium azide)  |
| <b>Storage Instruction</b> | Store at -20 °C or -80 °C.<br>Aliquot to avoid repeated freezing and thawing.  |
| <b>Note</b>                | This product contains sodium azide: a POISONOUS AND HAZARDOUS SUBSTANCE which should be handled by trained staff only.   |

## Applications

- Western Blot

Western Blot analysis of Lane 1: 293 whole cell lysate; Lane 2: MCF-7 whole cell lysate; Lane 3: Raji whole cell lysate; Lane 4: HepG2 whole cell lysate.

- Immunohistochemistry

Immunohistochemistry image of PABPN1 recombinant monoclonal antibody, clone 6C3 diluted at 1:100 and staining in paraffin-embedded human testis tissue performed on a Leica Bond™ system.

- Immunofluorescence

Immunofluorescence staining of Hela Cells with PABPN1 recombinant monoclonal antibody, clone 6C3 at 1:50, counter-stained with DAPI.

- Enzyme-linked Immunoabsorbent Assay

- Flow Cytometry

Overlay histogram showing Hela cells stained with PABPN1 recombinant monoclonal antibody, clone 6C3 (red line) at 1:50.

## Gene Info — PABPN1

**Entrez GeneID** [8106](#)

**Protein Accession#** [Q86U42](#)

**Gene Name** PABPN1

**Gene Alias** OPMD, PAB2, PABP2

**Gene Description** poly(A) binding protein, nuclear 1

**Omim ID** [164300 602279](#)

**Gene Ontology** [Hyperlink](#)

**Gene Summary** This gene encodes an abundant nuclear protein that binds with high affinity to nascent poly(A) tails . The protein is required for progressive and efficient polymerization of poly(A) tails on the 3' ends of eukaryotic genes and controls the size of the poly(A) tail to about 250 nt. At steady-state, this protein is localized in the nucleus whereas a different poly(A) binding protein is localized in the cytoplasm. An expansion of the trinucleotide (GCG) repeat from normal 6 to 8-13 at the 5' end of the coding region of this gene leads to autosomal dominant oculopharyngeal muscular dystrophy (OPMD) disease. Multiple splice variants have been described but their full-length nature is not known . One splice variant includes introns 1 and 6 but no protein is formed. [provided by RefSeq]

**Other Designations** poly(A) binding protein 2|poly(A) binding protein II

## Disease

- [Genetic Predisposition to Disease](#)
- [Hematologic Diseases](#)
- [Muscular Dystrophies](#)
- [Occupational Diseases](#)