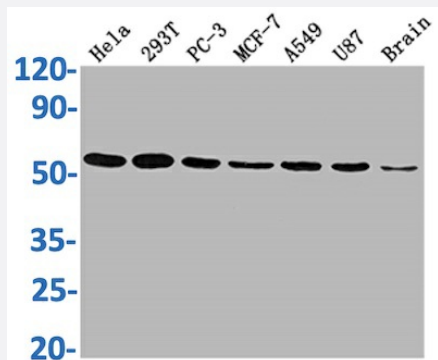


RecomAb™

KLF4 recombinant monoclonal antibody, clone 3A1

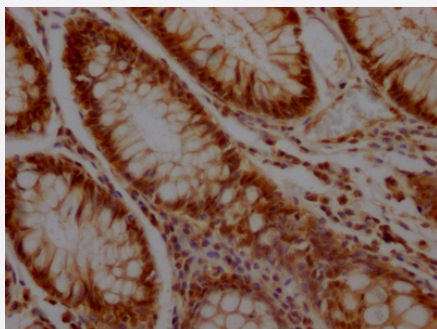
Catalog # RAB04051 Size 100 uL

Applications



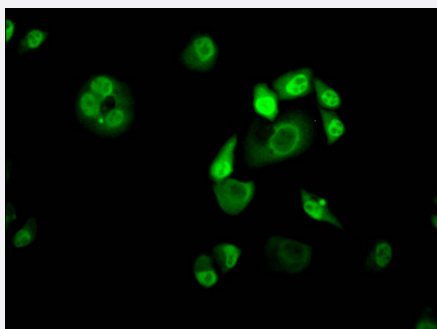
Western Blot

Western Blot analysis of Lane 1: HeLa whole cell lysate; Lane 2: 293T whole cell lysate; Lane 3: PC-3 whole cell lysate; Lane 4: MCF-7 whole cell lysate; Lane 5: A549 whole cell lysate; Lane 6: U87 whole cell lysate; Lane 7: Brain tissue.



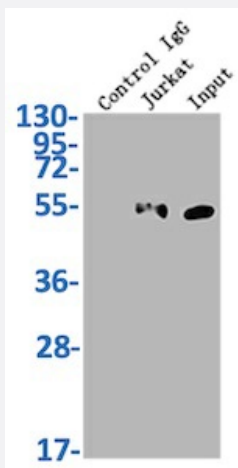
Immunohistochemistry

Immunohistochemistry image of KLF4 recombinant monoclonal antibody, clone 3A1 diluted at 1:100 and staining in paraffin-embedded human colon cancer performed on a Leica Bond™ system.



Immunofluorescence

Immunofluorescence staining of HeLa Cells with KLF4 recombinant monoclonal antibody, clone 3A1 at 1:50, counter-stained with DAPI.



Immunoprecipitation

Immunoprecipitating KLF4 in Hela whole cell lysate.

Specification

Product Description	Rabbit recombinant monoclonal antibody raised against human KLF4.
Antibody Species	Rabbit
Immunogen	Original antibody is raised against recombinant protein corresponding to full length human KLF4.
Reactivity	Human
Form	Liquid
Purification	Affinity-chromatography
Isotype	IgG
Recommend Usage	ELISA Immunohistochemistry (1:50-1:200) Immunoprecipitation(1:200-1:1000) Immunofluorescence(1:20-1:200) Western Blot (1:500-1:5000) The optimal working dilution should be determined by the end user.
Storage Buffer	In PBS, pH7.4 (150mM NaCl, 50% glycerol and 0.02% sodium azide)
Storage Instruction	Store at -20 °C or -80 °C. Aliquot to avoid repeated freezing and thawing.
Note	This product contains sodium azide: a POISONOUS AND HAZARDOUS SUBSTANCE which should be handled by trained staff only.

Applications

- Western Blot

Western Blot analysis of Lane 1: Hela whole cell lysate; Lane 2: 293T whole cell lysate; Lane 3: PC-3 whole cell lysate; Lane 4: MCF-7 whole cell lysate; Lane 5: A549 whole cell lysate; Lane 6: U87 whole cell lysate; Lane 7: Brain tissue.

- Immunohistochemistry

Immunohistochemistry image of KLF4 recombinant monoclonal antibody, clone 3A1 diluted at 1:100 and staining in paraffin-embedded human colon cancer performed on a Leica Bond™ system.

- Immunofluorescence

Immunofluorescence staining of Hela Cells with KLF4 recombinant monoclonal antibody, clone 3A1 at 1:50, counter-stained with DAPI.

- Immunoprecipitation

Immunoprecipitating KLF4 in Hela whole cell lysate.

- Enzyme-linked Immunoabsorbent Assay

Gene Info — KLF4

Entrez GeneID	9314
Protein Accession#	O43474
Gene Name	KLF4
Gene Alias	EZF, GKLF
Gene Description	Kruppel-like factor 4 (gut)
Omim ID	602253
Gene Ontology	Hyperlink
Other Designations	OTTHUMP00000021862 endothelial Kruppel-like zinc finger protein

Disease

- [Diabetes Mellitus](#)

- [Genetic Predisposition to Disease](#)