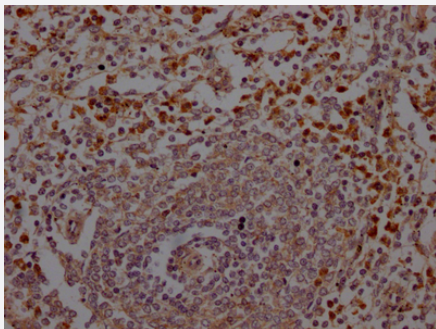


RecomAb™

# ELANE recombinant monoclonal antibody, clone 2H12

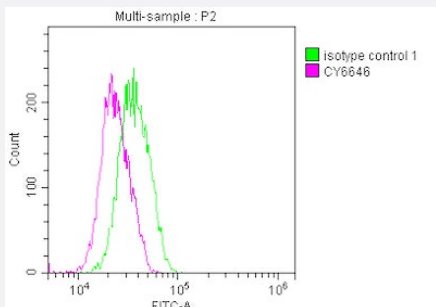
Catalog # RAB04050      Size 100 uL

## Applications



### Immunohistochemistry

Immunohistochemistry image of ELANE recombinant monoclonal antibody, clone 2H12 diluted at 1:100 and staining in paraffin-embedded human spleen tissue performed on a Leica Bond™ system.



### Flow Cytometry

Overlay histogram showing Jurkat cells stained with ELANE recombinant monoclonal antibody, clone 2H12 (red line) at 1:50.

## Specification

<b>Product Description</b>	Rabbit recombinant monoclonal antibody raised against human ELANE.
<b>Antibody Species</b>	Rabbit
<b>Immunogen</b>	Original antibody is raised against recombinant protein corresponding to full length human ELANE.
<b>Reactivity</b>	Human
<b>Form</b>	Liquid
<b>Purification</b>	Affinity-chromatography

Isotype	IgG
Recommend Usage	ELISA Flow Cytometry (1:20-1:200) Immunohistochemistry (1:50-1:200) The optimal working dilution should be determined by the end user.
Storage Buffer	In PBS, pH7.4 (150mM NaCl, 50% glycerol and 0.02% sodium azide)
Storage Instruction	Store at -20 °C or -80 °C. Aliquot to avoid repeated freezing and thawing.
Note	This product contains sodium azide: a POISONOUS AND HAZARDOUS SUBSTANCE which should be handled by trained staff only.

## Applications

- Immunohistochemistry

Immunohistochemistry image of ELANE recombinant monoclonal antibody, clone 2H12 diluted at 1:100 and staining in paraffin-embedded human spleen tissue performed on a Leica Bond™ system.

- Enzyme-linked Immunoabsorbent Assay

- Flow Cytometry

Overlay histogram showing Jurkat cells stained with ELANE recombinant monoclonal antibody, clone 2H12 (red line) at 1:50.

## Gene Info — ELA2

Entrez GeneID	<a href="#">1991</a>
Protein Accession#	<a href="#">P08246</a>
Gene Name	ELA2
Gene Alias	GE, HLE, HNE, NE, PMN-E
Gene Description	elastase 2, neutrophil
Omim ID	<a href="#">130130</a> <a href="#">162800</a> <a href="#">202700</a>
Gene Ontology	<a href="#">Hyperlink</a>

**Gene Summary**

Elastases form a subfamily of serine proteases that hydrolyze many proteins in addition to elastin. Humans have six elastase genes which encode the structurally similar proteins. The product of this gene hydrolyzes proteins within specialized neutrophil lysosomes, called azurophil granules, as well as proteins of the extracellular matrix following the protein's release from activated neutrophils. The enzyme may play a role in degenerative and inflammatory diseases by its proteolysis of collagen-IV and elastin of the extracellular matrix. This protein degrades the outer membrane protein A (OmpA) of *E. coli* as well as the virulence factors of such bacteria as *Shigella*, *Salmonella* and *Yersinia*. Mutations in this gene are associated with cyclic neutropenia and severe congenital neutropenia (SCN). This gene is clustered with other serine protease gene family members, azurocidin 1 and proteinase 3 genes, at chromosome 19pter. All 3 genes are expressed coordinately and their protein products are packaged together into azurophil granules during neutrophil differentiation. [provided by RefSeq]

**Other Designations**

bone marrow serine protease|granulocyte-derived elastase|leukocyte elastase|medullasin|polymorphonuclear elastase

**Pathway**

- [Systemic lupus erythematosus](#)

**Disease**

- [Chronic Disease](#)
- [Coronary Disease](#)
- [Genetic Predisposition to Disease](#)
- [Liver Cirrhosis](#)
- [Lung Neoplasms](#)
- [Myocardial Infarction](#)
- [Neutropenia](#)
- [Pulmonary Disease](#)