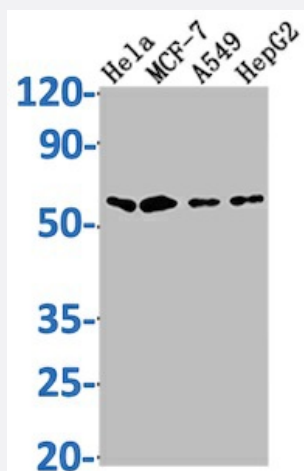


RecomAb™

SOX10 recombinant monoclonal antibody, clone 8E1

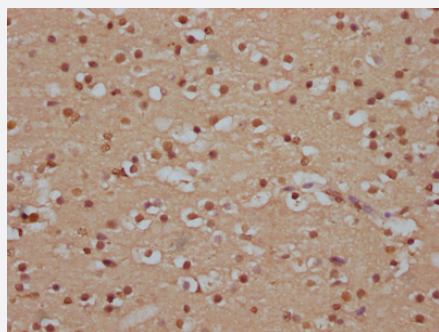
Catalog # RAB04015 Size 100 uL

Applications



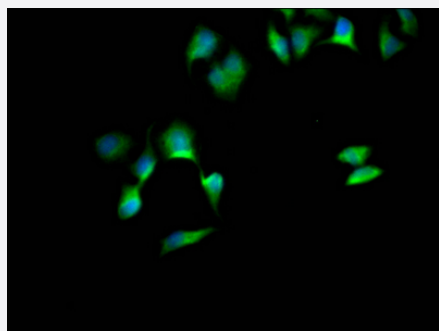
Western Blot

Western Blot analysis of Lane 1: HeLa whole cell lysate; Lane 2: MCF-7 whole cell lysate; Lane 3: A549 whole cell lysate; Lane 4: HepG2 whole cell lysate.



Immunohistochemistry

Immunohistochemistry image of SOX10 recombinant monoclonal antibody, clone 8E1 diluted at 1:100 and staining in paraffin-embedded human brain tissue performed on a Leica Bond™ system.



Immunofluorescence

Immunofluorescence staining of HeLa Cells with SOX10 recombinant monoclonal antibody, clone 8E1 at 1:50, counter-stained with DAPI.

Specification

Product Description	Rabbit recombinant monoclonal antibody raised against human SOX10.
Antibody Species	Rabbit
Immunogen	Original antibody is raised against recombinant protein corresponding to full length human SOX10.
Reactivity	Human
Form	Liquid
Purification	Affinity-chromatography
Isotype	IgG
Recommend Usage	ELISA Immunohistochemistry (1:50-1:200) Immunofluorescence(1:20-1:200) Western Blot (1:500-1:5000) The optimal working dilution should be determined by the end user.
Storage Buffer	In PBS, pH7.4 (150mM NaCl, 50% glycerol and 0.02% sodium azide)
Storage Instruction	store at -20 °C or -80 °C. Aliquot to avoid repeated freezing and thawing.
Note	This product contains sodium azide: a POISONOUS AND HAZARDOUS SUBSTANCE which should be handled by trained staff only.

Applications

- Western Blot

Western Blot analysis of Lane 1: Hela whole cell lysate; Lane 2: MCF-7 whole cell lysate; Lane 3: A549 whole cell lysate; Lane 4: HepG2 whole cell lysate.

- Immunohistochemistry

Immunohistochemistry image of SOX10 recombinant monoclonal antibody, clone 8E1 diluted at 1:100 and staining in paraffin-embedded human brain tissue performed on a Leica Bond™ system.

- Immunofluorescence

Immunofluorescence staining of Hela Cells with SOX10 recombinant monoclonal antibody, clone 8E1 at 1:50, counter-stained with DAPI.

- Enzyme-linked Immunoabsorbent Assay

Gene Info — SOX10

Entrez GeneID	6663
Protein Accession#	P56693
Gene Name	SOX10
Gene Alias	DOM, MGC15649, WS2E, WS4
Gene Description	SRY (sex determining region Y)-box 10
Omim ID	277580 601706 602229 609136
Gene Ontology	Hyperlink
Gene Summary	This gene encodes a member of the SOX (SRY-related HMG-box) family of transcription factors involved in the regulation of embryonic development and in the determination of the cell fate. The encoded protein may act as a transcriptional activator after forming a protein complex with other proteins. This protein acts as a nucleocytoplasmic shuttle protein and is important for neural crest and peripheral nervous system development. Mutations in this gene are associated with Waardenburg-Shah and Waardenburg-Hirschsprung disease. [provided by RefSeq]
Other Designations	OTTHUMP00000028515 OTTHUMP00000195094 SRY-related HMG-box gene 10 dominant megaloblastic anemia, mouse, human homolog of

Disease

- [Genetic Predisposition to Disease](#)
- [Hirschsprung Disease](#)
- [Kidney Failure](#)
- [Malignant melanoma](#)
- [Melanoma](#)
- [Neoplasm Metastasis](#)
- [Schizophrenia](#)
- [Skin Neoplasms](#)