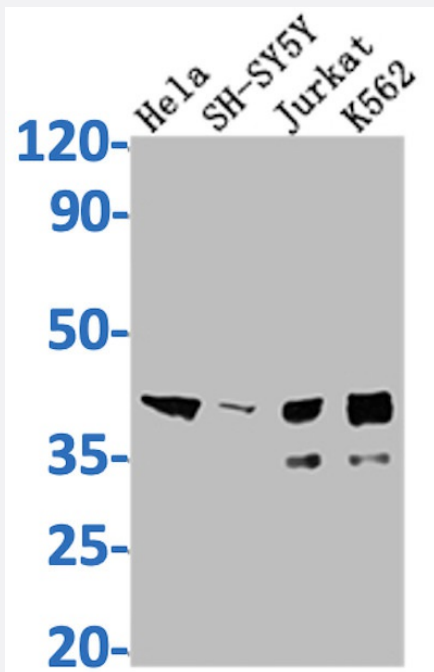


RecomAb™

# ISL1 recombinant monoclonal antibody, clone 4F6

Catalog # RAB03984      Size 100 uL

## Applications



### Western Blot

Western Blot analysis of Lane 1: HeLa whole cell lysate; Lane 2: SH-SY5Y whole cell lysate; Lane 3: Jurkat whole cell lysate; Lane 4: K562 whole cell lysate.

## Specification

Product Description	Rabbit recombinant monoclonal antibody raised against human ISL1.
Antibody Species	Rabbit
Immunogen	Original antibody is raised against recombinant protein corresponding to full length human ISL1.
Theoretical MW (kDa)	Calculated MW: 40 kD
Reactivity	Human
Form	Liquid
Purification	Affinity-chromatography

Isotype	IgG
Recommend Usage	ELISA Western Blot(1:500-1:5000) The optimal working dilution should be determined by the end user.
Storage Buffer	In PBS, pH7.4 (150mM NaCl, 50% glycerol and 0.02% sodium azide)
Storage Instruction	store at -20 °C or -80 °C. Aliquot to avoid repeated freezing and thawing.
Note	This product contains sodium azide: a POISONOUS AND HAZARDOUS SUBSTANCE which should be handled by trained staff only.

## Applications

- Western Blot

Western Blot analysis of Lane 1: Hela whole cell lysate; Lane 2: SH-SY5Y whole cell lysate; Lane 3: Jurkat whole cell lysate; Lane 4: K562 whole cell lysate.

- Enzyme-linked Immunoabsorbent Assay

## Gene Info — ISL1

Entrez GeneID	<a href="#">3670</a>
Protein Accession#	<a href="#">P61371</a>
Gene Name	ISL1
Gene Alias	Isl-1
Gene Description	ISL LIM homeobox 1
Omim ID	<a href="#">600366</a>
Gene Ontology	<a href="#">Hyperlink</a>
Gene Summary	This gene encodes a member of the LIM/homeodomain family of transcription factors. The encoded protein binds to the enhancer region of the insulin gene, among others, and may play an important role in regulating insulin gene expression. The encoded protein is central to the development of pancreatic cell lineages and may also be required for motor neuron generation. Mutations in this gene have been associated with maturity-onset diabetes of the young. [provided by RefSeq]
Other Designations	ISL1 transcription factor, LIM/homeodomain islet-1

## Disease

- [Attention Deficit Disorder with Hyperactivity](#)
- [Diabetes Mellitus](#)
- [Genetic Predisposition to Disease](#)
- [Heart Defects](#)
- [Tourette Syndrome](#)