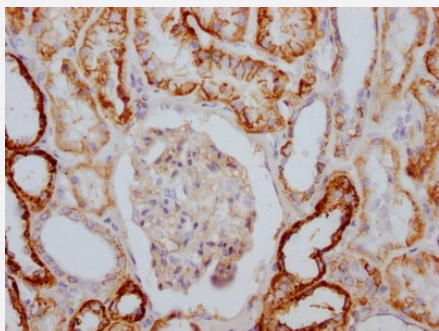


RecomAb™

# ATP1A1 recombinant monoclonal antibody, clone 4C3

Catalog # RAB03981      Size 100 uL

## Applications



### Immunohistochemistry

Immunohistochemistry staining in paraffin-embedded human kidney tissue.

## Specification

Product Description	Rabbit recombinant monoclonal antibody raised against human ATP1A1.
Antibody Species	Rabbit
Immunogen	Original antibody is raised against recombinant protein corresponding to full length human ATP1A1.
Reactivity	Human
Form	Liquid
Purification	Affinity-chromatography
Isotype	IgG
Recommend Usage	ELISA Immunohistochemistry (1:50-1:200) The optimal working dilution should be determined by the end user.
Storage Buffer	In PBS, pH7.4 (150mM NaCl, 50% glycerol and 0.02% sodium azide)
Storage Instruction	store at -20 °C or -80 °C. Aliquot to avoid repeated freezing and thawing.

## Note

This product contains sodium azide: a POISONOUS AND HAZARDOUS SUBSTANCE which should be handled by trained staff only.

## Applications

- Immunohistochemistry

Immunohistochemistry staining in paraffin-embedded human kidney tissue.

## Gene Info — ATP1A1

Entrez GeneID [476](#)

Protein Accession# [P05023](#)

Gene Name ATP1A1

Gene Alias MGC3285, MGC51750

Gene Description ATPase, Na<sup>+</sup>/K<sup>+</sup> transporting, alpha 1 polypeptide

Omim ID [182310](#)

Gene Ontology [Hyperlink](#)

**Gene Summary**

The protein encoded by this gene belongs to the family of P-type cation transport ATPases, and to the subfamily of Na<sup>+</sup>/K<sup>+</sup> -ATPases. Na<sup>+</sup>/K<sup>+</sup> -ATPase is an integral membrane protein responsible for establishing and maintaining the electrochemical gradients of Na and K ions across the plasma membrane. These gradients are essential for osmoregulation, for sodium-coupled transport of a variety of organic and inorganic molecules, and for electrical excitability of nerve and muscle. This enzyme is composed of two subunits, a large catalytic subunit (alpha) and a smaller glycoprotein subunit (beta). The catalytic subunit of Na<sup>+</sup>/K<sup>+</sup> -ATPase is encoded by multiple genes. This gene encodes an alpha 1 subunit. Multiple transcript variants encoding different isoforms have been found for this gene. [provided by RefSeq]

**Other Designations**

G00-119-711|Na<sup>+</sup>, K<sup>+</sup> ATPase alpha subunit|Na<sup>+</sup>/K<sup>+</sup> -ATPase alpha 1 subunit|Na<sup>+</sup>/K<sup>+</sup> ATPase 1|Na, K-ATPase, alpha-A catalytic polypeptide|Na,K-ATPase alpha-1 subunit|Na,K-ATPase catalytic subunit alpha-A protein|Na/K-ATPase alpha subunit fragment (aa 1-149)|OTT

## Pathway

- [Cardiac muscle contraction](#)

## Disease

- [Altitude Sickness](#)
- [Bipolar Disorder](#)
- [Cardiovascular Diseases](#)
- [Diabetes Mellitus](#)
- [Edema](#)
- [Genetic Predisposition to Disease](#)
- [Graves Disease](#)
- [Hypertension](#)
- [Hypokalemic Periodic Paralysis](#)