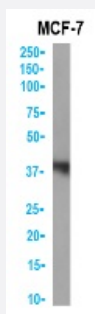


RecomAb™

WDR5 recombinant monoclonal antibody, clone RAB-C223

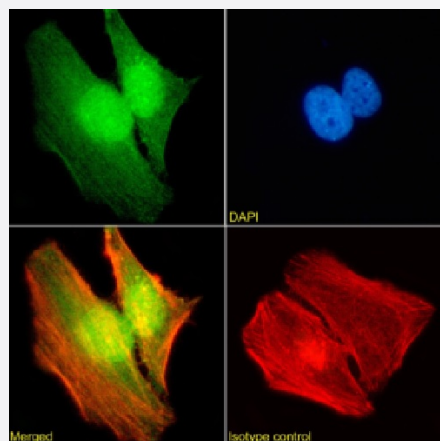
Catalog # RAB03969 Size 200 ug

Applications



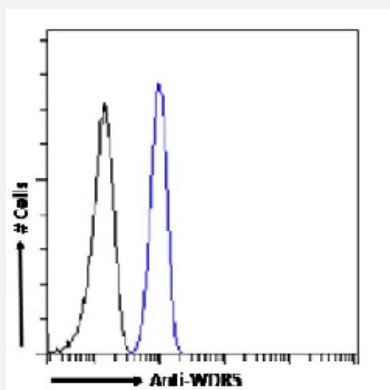
Western Blot

Western blot analysis of nuclear lysate of MCF7 cells using anti-WDR5 recombinant monoclonal antibody, clone RAB-C223 (Cat # RAB03969).



Immunofluorescence

Immunofluorescence analysis of WDR5 (green) in HeLa cells using human anti-WDR5 recombinant monoclonal antibody, clone RAB-C223 (Cat # RAB03969), and DAPI (blue).



Flow Cytometry

Flow-cytometry analysis of WDR5 in HeLa cells using human anti-WDR5 recombinant monoclonal antibody, clone RAB-C223 (Cat # RAB03969).

Specification

Product Description	Rabbit recombinant monoclonal antibody raised against recombinant antibody (rAb) phage display recognizing WDR5 protein under non-denaturing conditions.
Antibody Species	Rabbit
Immunogen	Original antibody is raised against recombinant protein corresponding to recombinant antibody (rAb) phage display recognizing WDR5 protein under non-denaturing conditions.
Reactivity	Human
Form	Liquid
Isotype	IgG kappa
Recommend Usage	ChIP ELISA Flow cytometry Immunofluorescence Immunoprecipitation-MS Spiked-IP Western Blot The optimal working dilution should be determined by the end user.
Storage Buffer	In PBS (0.02% Proclin 300)
Storage Instruction	Store at 4°C for 3 months. For long term storage store at -20°C. Aliquot to avoid repeated freezing and thawing.

Applications

- ChIP

- Western Blot

Western blot analysis of nuclear lysate of MCF7 cells using anti-WDR5 recombinant monoclonal antibody, clone RAB-C223 (Cat # RAB03969).

- Immunofluorescence

Immunofluorescence analysis of WDR5 (green) in HeLa cells using human anti-WDR5 recombinant monoclonal antibody, clone RAB-C223 (Cat # RAB03969), and DAPI(blue).

- Enzyme-linked Immunoabsorbent Assay

- Flow Cytometry

Flow-cytometry analysis of WDR5 in HeLa cells using human anti-WDR5 recombinant monoclonal antibody, clone RAB-C223 (Cat # RAB03969).

Gene Info — WDR5

Entrez GeneID [11091](#)

Protein Accession# [P61964](#)

Gene Name WDR5

Gene Alias BIG-3, SWD3

Gene Description WD repeat domain 5

Omim ID [609012](#)

Gene Ontology [Hyperlink](#)

Gene Summary This gene encodes a member of the WD repeat protein family. WD repeats are minimally conserved regions of approximately 40 amino acids typically bracketed by gly-his and trp-aspartate (GH-WD), which may facilitate formation of heterotrimeric or multiprotein complexes. Members of this family are involved in a variety of cellular processes, including cell cycle progression, signal transduction, apoptosis, and gene regulation. This protein contains 7 WD repeats. Alternatively spliced transcript variants encoding the same protein have been identified. [provided by RefSeq]

Other Designations BMP2-induced 3-kb gene protein|SWD3, Set1c WD40 repeat protein, homolog|WD-repeat protein 5