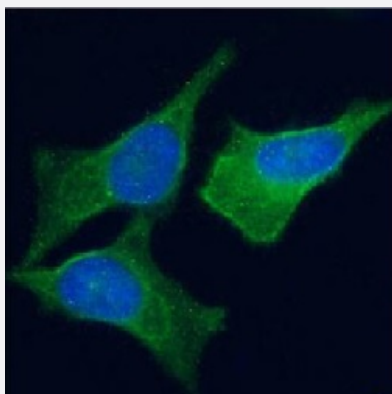


RecomAb™

AOC3 recombinant monoclonal antibody, clone TK8-14

Catalog # RAB03960 Size 200 ug

Applications



Immunofluorescence

Immunofluorescence analysis of AOC3 (green) in HeLa cells using human anti-VAP-1 recombinant monoclonal antibody, clone TK8-14 (Cat # RAB03960), and DAPI(blue).

Specification

Product Description	Rabbit recombinant monoclonal antibody raised against affinity purified VAP-1 from tonsil stroma of human origin.
Antibody Species	Rabbit
Immunogen	Original antibody is raised against recombinant protein corresponding to affinity purified VAP-1 from tonsil stroma of human origin.
Reactivity	Human
Form	Liquid
Isotype	IgG kappa

Recommend Usage	ELISA
	Flow cytometry
	Immunofluorescence
	Immunohistochemistry
	Immunoprecipitation
	Western Blot
	The optimal working dilution should be determined by the end user.

Storage Buffer	In PBS (0.02% Proclin 300)
----------------	----------------------------

Storage Instruction	Store at 4°C for 3 months. For long term storage store at -20°C. Aliquot to avoid repeated freezing and thawing.
---------------------	---

Applications

- Western Blot
- Immunohistochemistry (Formalin/PFA-fixed paraffin-embedded sections)
- Immunofluorescence
Immunofluorescence analysis of AOC3 (green) in HeLa cells using human anti-VAP-1 recombinant monoclonal antibody, clone TK8-14 (Cat # RAB03960), and DAPI(blue).
- Immunoprecipitation
- Enzyme-linked Immunoabsorbent Assay
- Flow Cytometry

Gene Info — AOC3

Entrez GeneID	8639
Protein Accession#	Q16853
Gene Name	AOC3
Gene Alias	HPAO, SSAO, VAP-1, VAP1
Gene Description	amine oxidase, copper containing 3 (vascular adhesion protein 1)
Omim ID	603735

Gene Ontology

[Hyperlink](#)

Gene Summary

Copper amine oxidases catalyze the oxidative conversion of amines to aldehydes in the presence of copper and quinone cofactor. The product is a major protein on the adipocyte plasma membrane. It has adhesive properties and also has functional monoamine oxidase activity. A pseudogene for this gene has been described and is located approximately 9-kb downstream. [provided by RefSeq]

Other Designations

amine oxidase, copper containing 3|copper amine oxidase|semicarbazide-sensitive amine oxidase|vascular adhesion protein 1

Pathway

- [beta-Alanine metabolism](#)
- [Biosynthesis of alkaloids derived from ornithine](#)
- [Glycine](#)
- [Isoquinoline alkaloid biosynthesis](#)
- [Metabolic pathways](#)
- [Phenylalanine metabolism](#)
- [Tropane](#)
- [Tyrosine metabolism](#)