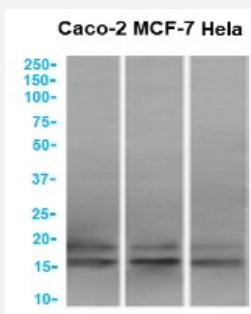


RecomAb™

UBE2C recombinant monoclonal antibody, clone SAIC-41A-1

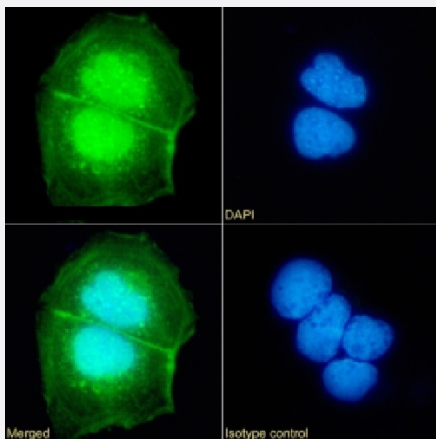
Catalog # RAB03921 Size 200 ug

Applications



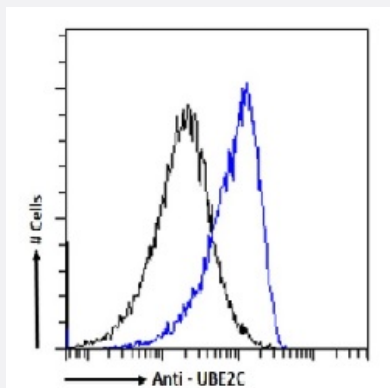
Western Blot

Western blot analysis of Caco-2, MCF7, HeLa cell lysate using anti-UBE2C recombinant monoclonal antibody, clone SAIC-41A-1 (Cat # RAB03921).



Immunofluorescence

Immunofluorescence analysis of UBE2C (green) in Caco-2 cells using human anti-UBE2C recombinant monoclonal antibody, clone SAIC-41A-1 (Cat # RAB03921), and DAPI (blue).



Flow Cytometry

Flow-cytometry analysis of UBE2C in MCF7 cells using human anti-UBE2C recombinant monoclonal antibody, clone SAIC-41A-1 (Cat # RAB03921).

Specification

| | |
|----------------------------|---|
| Product Description | Rabbit recombinant monoclonal antibody raised against synthetic peptide corresponding to peptide "GISAFPESDNLFK", derived from the Ubiquitin-conjugating enzyme E2C, conjugated to KLH. |
| Antibody Species | Rabbit |
| Immunogen | Original antibody is raised against a synthetic peptide corresponding to peptide "GISAFPESDNLFK", derived from the Ubiquitin-conjugating enzyme E2C, conjugated to KLH. |
| Sequence | GISAFPESDNLFK |
| Reactivity | Human |
| Form | Liquid |
| Isotype | IgG |
| Recommend Usage | ELISA Flow cytometry Immunofluorescence Immuno-MRM Western Blot The optimal working dilution should be determined by the end user. |
| Storage Buffer | In PBS (0.02% Proclin 300) |
| Storage Instruction | Store at 4°C for 3 months. For long term storage store at -20°C. Aliquot to avoid repeated freezing and thawing. |

Applications

- Western Blot

Western blot analysis of Caco-2, MCF7, HeLa cell lysate using anti-UBE2C recombinant monoclonal antibody, clone SAIC-41A-1 (Cat # RAB03921).

- Immunofluorescence

Immunofluorescence analysis of UBE2C (green) in Caco-2 cells using human anti-UBE2C recombinant monoclonal antibody, clone SAIC-41A-1 (Cat # RAB03921), and DAPI(blue).

- Enzyme-linked Immunoabsorbent Assay

- Flow Cytometry

Flow-cytometry analysis of UBE2C in MCF7 cells using human anti-UBE2C recombinant monoclonal antibody, clone SAIC-41A-1 (Cat # RAB03921).

- Immuno-MRM (multiple reaction monitoring)

Gene Info — UBE2C

Entrez GeneID [11065](#)

Protein Accession# [O00762](#)

Gene Name UBE2C

Gene Alias UBCH10, dJ447F3.2

Gene Description ubiquitin-conjugating enzyme E2C

Omim ID [605574](#)

Gene Ontology [Hyperlink](#)

Gene Summary

The modification of proteins with ubiquitin is an important cellular mechanism for targeting abnormal or short-lived proteins for degradation. Ubiquitination involves at least three classes of enzymes: ubiquitin-activating enzymes, or E1s, ubiquitin-conjugating enzymes, or E2s, and ubiquitin-protein ligases, or E3s. This gene encodes a member of the E2 ubiquitin-conjugating enzyme family. This enzyme is required for the destruction of mitotic cyclins and for cell cycle progression. Multiple transcript variants encoding different isoforms have been found for this gene. [provided by RefSeq]

Other Designations

OTTHUMP00000031653|OTTHUMP00000031655|cyclin-selective ubiquitin carrier protein|mitotic-specific ubiquitin-conjugating enzyme|ubiquitin carrier protein E2-C|ubiquitin-protein ligase C

Pathway

- [Ubiquitin mediated proteolysis](#)

Disease

- [Cardiovascular Diseases](#)
- [Diabetes Mellitus](#)

- [Edema](#)