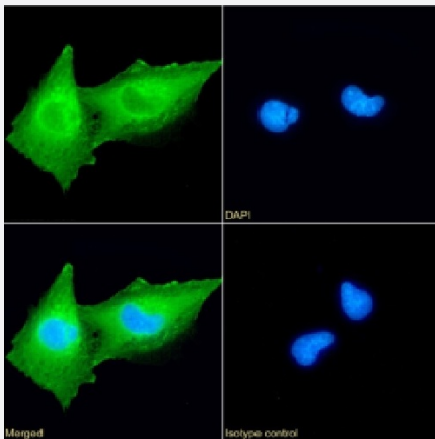


RecomAb™

SNCG recombinant monoclonal antibody, clone SAIC-31A-10

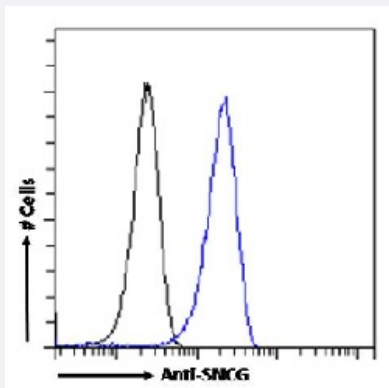
Catalog # RAB03850 Size 200 ug

Applications



Immunofluorescence

Immunofluorescence analysis of SNCG (green) in U251 cells using human anti-SNCG recombinant monoclonal antibody, clone SAIC-31A-10 (Cat # RAB03850), and DAPI (blue).



Flow Cytometry

Flow-cytometry analysis of SNCG in U251 cells using human anti-SNCG recombinant monoclonal antibody, clone SAIC-31A-10 (Cat # RAB03850).

Specification

Product Description

Rabbit recombinant monoclonal antibody raised against synthetic peptide corresponding to the KLH-conjugated peptide "YLAPSGPSGTLK", derived from Gamma-synuclein. Gamma-synuclein plays a role in neurofilament network integrity.

Antibody Species

Rabbit

Immunogen	Original antibody is raised against a synthetic peptide corresponding to the KLH-conjugated peptide "YLAPSGPSGTLK", derived from Gamma-synuclein. Gamma-synuclein plays a role in neurofilament network integrity.
Sequence	YLAPSGPSGTLK
Reactivity	Human
Form	Liquid
Conjugation	Unconjugated
Concentration	batch dependent
Isotype	IgG
Recommend Usage	ELISA Flow cytometry Immuno-MRM Western Blot The optimal working dilution should be determined by the end user.
Storage Buffer	In PBS with 0.02% Proclin 300
Storage Instruction	Store at 4°C for 3 months. For long term storage store at -20°C. Aliquot to avoid repeated freezing and thawing.
Note	For research use only.

Applications

- Western Blot
- Immunofluorescence
Immunofluorescence analysis of SNCG (green) in U251 cells using human anti-SNCG recombinant monoclonal antibody, clone SAIC-31A-10 (Cat # RAB03850), and DAPI(blue).
- Enzyme-linked Immunoabsorbent Assay
- Flow Cytometry
Flow-cytometry analysis of SNCG in U251 cells using human anti-SNCG recombinant monoclonal antibody, clone SAIC-31A-10 (Cat # RAB03850).
- Immuno-MRM (multiple reaction monitoring)

Gene Info — SNCG

Entrez GeneID	6623
Protein Accession#	Q6FHG5
Gene Name	SNCG
Gene Alias	BCSG1, SR
Gene Description	synuclein, gamma (breast cancer-specific protein 1)
Omim ID	602998
Gene Ontology	Hyperlink
Gene Summary	Summary: This gene encodes a member of the synuclein family of proteins which are believed to be involved in the pathogenesis of neurodegenerative diseases. Mutations in this gene have also been associated with breast tumor development. [provided by RefSeq]
Other Designations	OTTHUMP00000020013 breast cancer-specific protein 1 persyn synoretin synuclein, gamma (breast cancer-specific gene 1)

Disease

- [Alzheimer disease](#)
- [Parkinson disease](#)