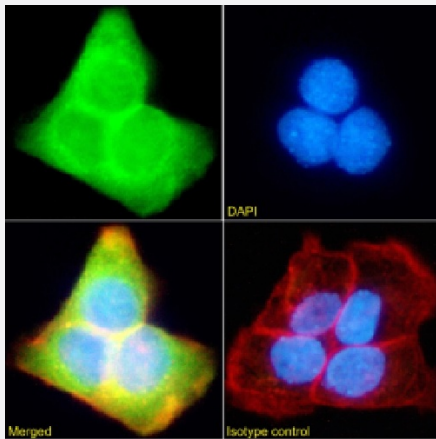


RecomAb™

# SFMBT1 recombinant monoclonal antibody, clone RAB-C396

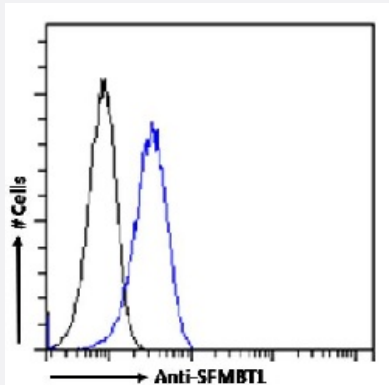
Catalog # RAB03845      Size 200 ug

## Applications



### Immunofluorescence

Immunofluorescence analysis of SFMBT1 (green) in A431 cells using human anti-SFMBT1 recombinant monoclonal antibody, clone RAB-C396 (Cat # RAB03845), and DAPI(blue).



### Flow Cytometry

Flow-cytometry analysis of SFMBT1 in A431 cells using human anti-SFMBT1 recombinant monoclonal antibody, clone RAB-C396 (Cat # RAB03845).

## Specification

<b>Product Description</b>	Rabbit recombinant monoclonal antibody raised against recombinant antibody (rAb) phage display recognizing SFMBT1 protein under non-denaturing conditions.
<b>Antibody Species</b>	Rabbit
<b>Immunogen</b>	Original antibody is raised against recombinant protein corresponding to recombinant antibody (rAb) phage display recognizing SFMBT1 protein under non-denaturing conditions.

Reactivity	Human
Form	Liquid
Conjugation	Unconjugated
Concentration	batch dependent
Isotype	IgG
Recommend Usage	ChIP ELISA Flow cytometry Immunofluorescence Immunoprecipitation-MS The optimal working dilution should be determined by the end user.
Storage Buffer	In PBS with 0.02% Proclin 300
Storage Instruction	Store at 4°C for 3 months. For long term storage store at -20°C. Aliquot to avoid repeated freezing and thawing.
Note	For research use only.

## Applications

- ChIP

- Immunofluorescence

Immunofluorescence analysis of SFMBT1 (green) in A431 cells using human anti-SFMBT1 recombinant monoclonal antibody, clone RAB-C396 (Cat # RAB03845), and DAPI(blue).

- Immunoprecipitation

- Enzyme-linked Immunoabsorbent Assay

- Flow Cytometry

Flow-cytometry analysis of SFMBT1 in A431 cells using human anti-SFMBT1 recombinant monoclonal antibody, clone RAB-C396 (Cat # RAB03845).

## Gene Info — SFMBT1

Entrez GeneID [51460](#)

Protein Accession#	<a href="#">Q9UHH3</a>
Gene Name	SFMBT1
Gene Alias	DKFZp434L243, RU1, SFMBT
Gene Description	Scm-like with four mbt domains 1
Omim ID	<a href="#">607319</a>
Gene Ontology	<a href="#">Hyperlink</a>
Gene Summary	This gene shares high similarity with the Drosophila Scm (sex comb on midleg) gene. It encodes a protein which contains four malignant brain tumor repeat (mbt) domains and may be involved in antigen recognition. Several alternative splice variants have been characterized. [provided by Ref Seq]
Other Designations	Scm-related gene containing four mbt domains Scm-related gene product containing four mbt domains