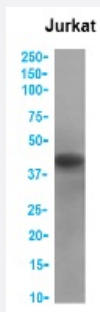


RecomAb™

RRM2 recombinant monoclonal antibody, clone SAIC-30C-18

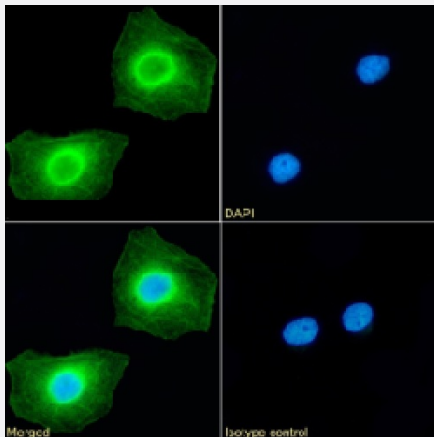
Catalog # RAB03840 Size 200 ug

Applications



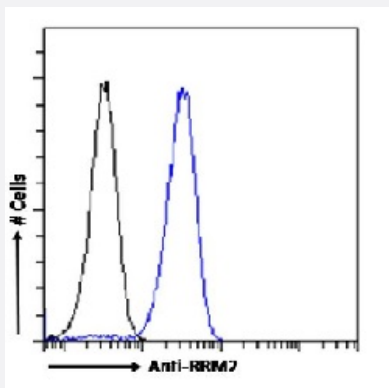
Western Blot

Western blot analysis of Jurkat cell lysate using anti-RRM2 recombinant monoclonal antibody, clone SAIC-30C-18 (Cat # RAB03840).



Immunofluorescence

Immunofluorescence analysis of RRM2 (green) in HeLa cells using human anti-RRM2 recombinant monoclonal antibody, clone SAIC-30C-18 (Cat # RAB03840), and DAPI (blue).



Flow Cytometry

Flow-cytometry analysis of RRM2 in HeLa cells using human anti-RRM2 recombinant monoclonal antibody, clone SAIC-30C-18 (Cat # RAB03840).

Specification

Product Description	Rabbit recombinant monoclonal antibody raised against synthetic peptide corresponding to the KLH-conjugated peptide "IEQEFLTEALPVK" derived from Ribonucleoside-diphosphate reductase subunit M2 (RRM2). RRM2 provides precursors required for DNA synthesis.
Antibody Species	Rabbit
Immunogen	Original antibody is raised against a synthetic peptide corresponding to the KLH-conjugated peptide "IEQEFLTEALPVK" derived from Ribonucleoside-diphosphate reductase subunit M2 (RRM2). RRM2 provides precursors required for DNA synthesis.
Sequence	IEQEFLTEALPVK
Reactivity	Human
Form	Liquid
Conjugation	Unconjugated
Concentration	batch dependent
Isotype	IgG
Recommend Usage	ELISA Flow cytometry Immunofluorescence Immuno-MRM Western Blot The optimal working dilution should be determined by the end user.
Storage Buffer	In PBS with 0.02% Proclin 300
Storage Instruction	Store at 4°C for 3 months. For long term storage store at -20°C. Aliquot to avoid repeated freezing and thawing.
Note	For research use only.

Applications

- Western Blot

Western blot analysis of Jurkat cell lysate using anti-RRM2 recombinant monoclonal antibody, clone SAIC-30C-18 (Cat # RAB03840).

- Immunofluorescence

Immunofluorescence analysis of RRM2 (green) in HeLa cells using human anti-RRM2 recombinant monoclonal antibody, clone SAIC-30C-18 (Cat # RAB03840), and DAPI(blue).

- Enzyme-linked Immunoabsorbent Assay

- Flow Cytometry

Flow-cytometry analysis of RRM2 in HeLa cells using human anti-RRM2 recombinant monoclonal antibody, clone SAIC-30C-18 (Cat # RAB03840).

- Immuno-MRM (multiple reaction monitoring)

Gene Info — RRM2

Entrez GeneID [6241](#)

Protein Accession# [P31350](#)

Gene Name RRM2

Gene Alias R2, RR2M

Gene Description ribonucleotide reductase M2 polypeptide

Omim ID [180390](#)

Gene Ontology [Hyperlink](#)

Gene Summary This gene encodes one of two non-identical subunits for ribonucleotide reductase. This reductase catalyzes the formation of deoxyribonucleotides from ribonucleotides. Synthesis of the encoded protein (M2) is regulated in a cell-cycle dependent fashion. Transcription from this gene can initiate from alternative promoters, which results in two isoforms that differ in the lengths of their N-termini. Related pseudogenes have been identified on chromosomes 1 and X. [provided by RefSeq]

Other Designations ribonucleotide reductase M2 subunit

Pathway

- [Glutathione metabolism](#)
- [Metabolic pathways](#)
- [p53 signaling pathway](#)

- [Purine metabolism](#)
- [Pyrimidine metabolism](#)

Disease

- [Abortion](#)
- [Adenocarcinoma](#)
- [Genetic Predisposition to Disease](#)
- [Pancreatic Neoplasms](#)