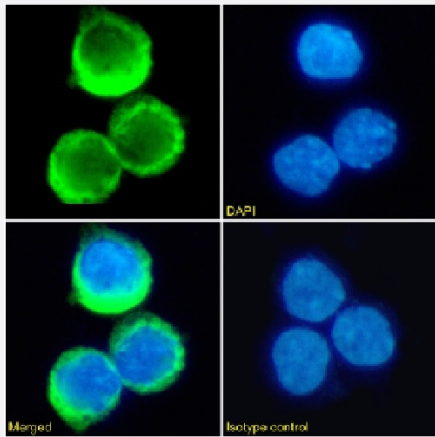


RecomAb™

RHD recombinant monoclonal antibody, clone D7C2

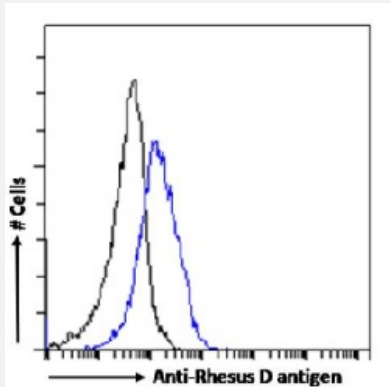
Catalog # RAB03837 Size 200 ug

Applications



Immunofluorescence

Immunofluorescence analysis of RHD (green) in K562 cells using human anti-Rhesus D recombinant monoclonal antibody, clone D7C2 (Cat # RAB03837), and DAPI(blue).



Flow Cytometry

Flow-cytometry analysis of RHD in K562 cells using human anti-Rhesus D recombinant monoclonal antibody, clone D7C2 (Cat # RAB03837).

Specification

Product Description

Rabbit recombinant monoclonal antibody raised against a Rh- volunteer blood donor (r/r) was injected with 5ml of Rh+ erythrocytes (R1/r) and the peripheral lymphocytes were isolated and transformed with 1 ml of culture supernatant of the EBV marmoset B96-8 cell line.

Antibody Species

Rabbit

Immunogen	Original antibody is raised against recombinant protein corresponding to a Rh- volunteer blood donor (r/r) was injected with 5ml of Rh+ erythrocytes (R1/r) and the peripheral lymphocytes were isolated and transformed with 1 ml of culture supernatant of the EBV marmoset B96-8 cell line
Reactivity	Human
Form	Liquid
Conjugation	Unconjugated
Concentration	batch dependent
Isotype	IgG
Recommend Usage	ADCC Flow cytometry Immunofluorescence The optimal working dilution should be determined by the end user.
Storage Buffer	In PBS with 0.02% Proclin 300
Storage Instruction	Store at 4°C for 3 months. For long term storage store at -20°C. Aliquot to avoid repeated freezing and thawing.
Note	For research use only.

Applications

- Immunofluorescence

Immunofluorescence analysis of RHD (green) in K562 cells using human anti-Rhesus D recombinant monoclonal antibody, clone D7C2 (Cat # RAB03837), and DAPI(blue).

- Flow Cytometry

Flow-cytometry analysis of RHD in K562 cells using human anti-Rhesus D recombinant monoclonal antibody, clone D7C2 (Cat # RAB03837).

Gene Info — RHD

Entrez GeneID	6007
Protein Accession#	Q02161?
Gene Name	RHD

Gene Alias	CD240D, DIIIc, MGC165007, RH, RH30, RHCED, RHDVA(TT), RHDel, RHPII, RHXIII, Rh4, RhD Cw, RhII, RhK562-II, RhPI
Gene Description	Rh blood group, D antigen
Omim ID	111680
Gene Ontology	Hyperlink
Gene Summary	<p>The Rh blood group system is the second most clinically significant of the blood groups, second only to ABO. It is also the most polymorphic of the blood groups, with variations due to deletions, gene conversions, and missense mutations. The Rh blood group includes this gene, which encodes the RhD protein, and a second gene that encodes both the RhC and RhE antigens on a single polypeptide. The two genes, and a third unrelated gene, are found in a cluster on chromosome 1. The classification of Rh-positive and Rh-negative individuals is determined by the presence or absence of the highly immunogenic RhD protein on the surface of erythrocytes. Multiple transcript variants encoding different isoforms have been found for this gene. [provided by RefSeq]</p>
Other Designations	D antigen (DCS) OTTHUMP00000003536 RH polypeptide 2 Rh blood group D antigen Rh blood group antigen Evans Rhesus system D polypeptide

Disease

- [AIDS-Related Opportunistic Infections](#)
- [Chromosome Deletion](#)
- [Erythroblastosis](#)
- [Fetal Diseases](#)
- [Genetic Predisposition to Disease](#)
- [Liver Cirrhosis](#)
- [Pregnancy Complications](#)
- [Rh Isoimmunization](#)
- [Schizophrenia](#)
- [Tuberculosis](#)