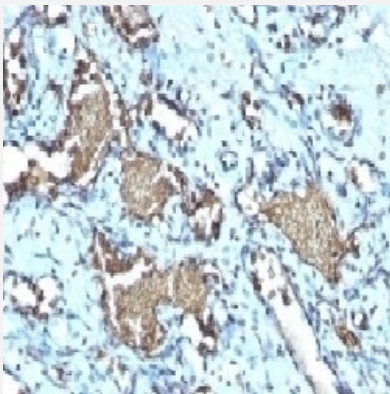


RecomAb™

GYPA recombinant monoclonal antibody, clone GYPA/1725R

Catalog # RAB03816 Size 100 ug

Applications



Immunohistochemistry (Formalin/PFA-fixed paraffin-embedded sections)

Immunohistochemistry (Formalin-fixed paraffin-embedded sections) of human angiosarcoma with anti-Glycophorin A recombinant monoclonal antibody, clone GYPA/1725R (Cat # RAB03816).

Specification

Product Description	Rabbit recombinant monoclonal antibody raised against recombinant human GPA protein.
Antibody Species	Rabbit
Immunogen	Original antibody is raised against recombinant protein corresponding to human GPA protein
Reactivity	Human
Form	Liquid
Conjugation	Unconjugated
Purification	Protein A affinity chromatography
Concentration	0.2 mg/mL
Isotype	IgG

Recommend Usage	Flow cytometry (0.5-1 ug/million cells in 0.1mL) Immunofluorescence (0.5-1 ug/mL) Immunohistochemistry (Formalin/PFA-fixed paraffin-embedded sections)(0.25-0.5 ug/mL for 30 min at RT) The optimal working dilution should be determined by the end user.
------------------------	---

Storage Buffer	In PBS, 0.1 mg/ml BSA, 0.05% sodium azide
-----------------------	---

Storage Instruction	Store at 2~8°C. Aliquot to avoid repeated freezing and thawing.
----------------------------	--

Note	Optimal dilutions for each application to be determined by the researcher
-------------	---

Applications

- Immunohistochemistry (Formalin/PFA-fixed paraffin-embedded sections)

Immunohistochemistry (Formalin-fixed paraffin-embedded sections) of human angiosarcoma with anti-Glycophorin A recombinant monoclonal antibody, clone GYPA/1725R (Cat # RAB03816).

- Immunofluorescence

- Flow Cytometry

Gene Info — GYPA

Entrez GeneID	2993
Protein Accession#	P02724
Gene Name	GYPA
Gene Alias	CD235a, GPA, GPERik, GPSAT, GpMiIII, HGpMiIII, HGpMiV, HGpMiX, HGpMiXI, HGpSta(C), MN, MNS
Gene Description	glycophorin A (MNS blood group)
Omim ID	111300 611162
Gene Ontology	Hyperlink

Gene Summary

Glycophorins A (GYPA) and B (GYPB) are major sialoglycoproteins of the human erythrocyte membrane which bear the antigenic determinants for the MN and Ss blood groups. In addition to the M or N and S or s antigens that commonly occur in all populations, about 40 related variant phenotypes have been identified. These variants include all the variants of the Miltenberger complex and several isoforms of Sta, as well as Dantu, Sat, He, Mg, and deletion variants Ena, S-s-U- and Mk. Most of the variants are the result of gene recombinations between GYPA and GYPB. [provided by RefSeq]

Other Designations

Mi.V glycoprotein (24 AA)|erythroid-lineage-specific membrane sialoglycoprotein|glycophorin A|glycophorin A (MN blood group)|glycophorin A MNS blood group|glycophorin A, GPA|glycophorin E rik|glycophorin Mi|glycophorin Mill|glycophorin MiV|glycophorin Mi

Pathway

- [Hematopoietic cell lineage](#)

Disease

- [Asthma](#)
- [Crohn Disease](#)
- [Genetic Predisposition to Disease](#)
- [Malaria](#)