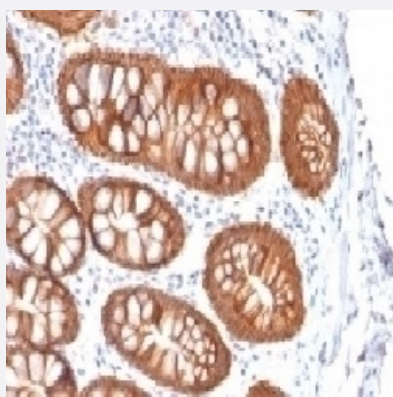


RecomAb™

EPCAM recombinant monoclonal antibody, clone rVU-1D9

Catalog # RAB03815 Size 100 ug

Applications



Immunohistochemistry (Formalin/PFA-fixed paraffin-embedded sections)

Immunohistochemistry (Formalin-fixed paraffin-embedded sections) of human colon carcinoma with anti-EpCAM recombinant monoclonal antibody, clone rVU-1D9 (Cat # RAB03815).

Specification

Product Description	Mouse recombinant monoclonal antibody raised against human small cell lung carcinoma cells.
Antibody Species	Mouse
Immunogen	Original antibody is raised against recombinant protein corresponding to human small cell lung carcinoma cells
Reactivity	Human
Specificity	Does not react with rat.
Form	Liquid
Conjugation	Unconjugated
Purification	Protein G affinity chromatography
Concentration	0.2 mg/mL
Isotype	IgG1, kappa

Recommend Usage	Immunohistochemistry (Formalin/PFA-fixed paraffin-embedded sections) The optimal working dilution should be determined by the end user.
Storage Buffer	In PBS, 0.1 mg/ml BSA, 0.05% sodium azide
Storage Instruction	Store at 2~8°C. Aliquot to avoid repeated freezing and thawing.
Note	Optimal dilutions for each application to be determined by the researcher

Applications

- Immunohistochemistry (Formalin/PFA-fixed paraffin-embedded sections)

Immunohistochemistry (Formalin-fixed paraffin-embedded sections) of human colon carcinoma with anti-EpCAM recombinant monoclonal antibody, clone rVU-1D9 (Cat # RAB03815).

Gene Info — EPCAM

Entrez GeneID	4072
Protein Accession#	P16422
Gene Name	EPCAM
Gene Alias	17-1A, 323/A3, CD326, CO-17A, CO17-1A, EGP, EGP-2, EGP34, EGP40, ESA, Ep-CAM, GA733-2, HEA125, KS1/4, KSA, M4S1, MH99, MIC18, MK-1, MOC31, TACST-1, TACSTD1, TROP1, hEGP-2
Gene Description	epithelial cell adhesion molecule
Omim ID	185535
Gene Ontology	Hyperlink
Gene Summary	This gene encodes a carcinoma-associated antigen and is a member of a family that includes at least two type I membrane proteins. This antigen is expressed on most normal epithelial cells and gastrointestinal carcinomas and functions as a homotypic calcium-independent cell adhesion molecule. The antigen is being used as a target for immunotherapy treatment of human carcinomas. Mutations in this gene result in congenital tufting enteropathy. [provided by RefSeq]
Other Designations	adenocarcinoma-associated antigen carcinoma-associated antigen GA733-2 human epithelial glycoprotein-2 membrane component, chromosome 4, surface marker (35kD glycoprotein) tumor-associated calcium signal transducer 1

Disease

- [Genetic Predisposition to Disease](#)
- [Ovarian Neoplasms](#)