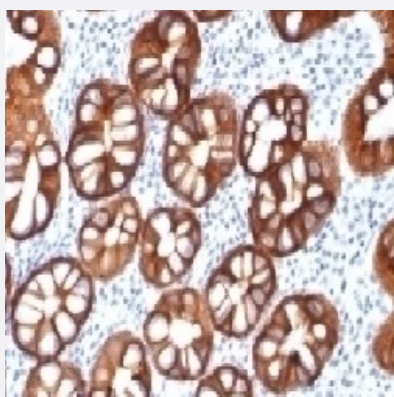


RecomAb™

EPCAM recombinant monoclonal antibody, clone rMOC-31

Catalog # RAB03814 Size 100 ug

Applications



Immunohistochemistry (Formalin/PFA-fixed paraffin-embedded sections)

Immunohistochemistry (Formalin-fixed paraffin-embedded sections) of human colon carcinoma with anti-EpCAM recombinant monoclonal antibody, clone rMOC-31 (Cat # RAB03814).

Specification

Product Description	Mouse recombinant monoclonal antibody raised against neuraminidase treated GLS-1 human small cell lung carcinoma cells.
Antibody Species	Mouse
Immunogen	Original antibody is raised against recombinant protein corresponding to neuraminidase treated GL S-1 human small cell lung carcinoma cells
Reactivity	Human
Specificity	Does not react with rat.
Form	Liquid
Conjugation	Unconjugated
Purification	Protein G affinity chromatography
Concentration	0.2 mg/mL

Isotype	IgG1, kappa
Recommend Usage	Immunofluorescence Immunohistochemistry (Formalin/PFA-fixed paraffin-embedded sections) The optimal working dilution should be determined by the end user.
Storage Buffer	In PBS, 0.1 mg/ml BSA, 0.05% sodium azide
Storage Instruction	Store at 2~8°C. Aliquot to avoid repeated freezing and thawing.
Note	Optimal dilutions for each application to be determined by the researcher

Applications

- Immunohistochemistry (Formalin/PFA-fixed paraffin-embedded sections)

Immunohistochemistry (Formalin-fixed paraffin-embedded sections) of human colon carcinoma with anti-EpCAM recombinant monoclonal antibody, clone rMOC-31 (Cat # RAB03814).

- Immunofluorescence

Gene Info — EPCAM

Entrez GeneID	4072
Protein Accession#	P16422
Gene Name	EPCAM
Gene Alias	17-1A, 323/A3, CD326, CO-17A, CO17-1A, EGP, EGP-2, EGP34, EGP40, ESA, Ep-CAM, GA7 33-2, HEA125, KS1/4, KSA, M4S1, MH99, MIC18, MK-1, MOC31, TACST-1, TACSTD1, TROP 1, hEGP-2
Gene Description	epithelial cell adhesion molecule
Omim ID	185535
Gene Ontology	Hyperlink
Gene Summary	This gene encodes a carcinoma-associated antigen and is a member of a family that includes at least two type I membrane proteins. This antigen is expressed on most normal epithelial cells and gastrointestinal carcinomas and functions as a homotypic calcium-independent cell adhesion molecule. The antigen is being used as a target for immunotherapy treatment of human carcinomas. Mutations in this gene result in congenital tufting enteropathy. [provided by RefSeq]

Other Designations

adenocarcinoma-associated antigen|carcinoma-associated antigen GA733-2|human epithelial glycoprotein-2|membrane component, chromosome 4, surface marker (35kD glycoprotein)|tumor-associated calcium signal transducer 1

Disease

- [Genetic Predisposition to Disease](#)
- [Ovarian Neoplasms](#)