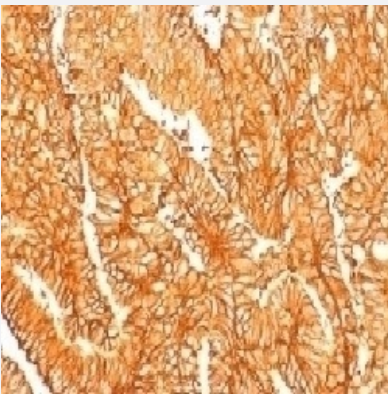


RecomAb™

EPCAM recombinant monoclonal antibody, clone EGP40/1555R

Catalog # RAB03813 Size 100 ug

Applications



Immunohistochemistry (Formalin/PFA-fixed paraffin-embedded sections)

Immunohistochemistry (Formalin-fixed paraffin-embedded sections) of human colon carcinoma with anti-EpCAM recombinant monoclonal antibody, clone EGP40/1556R (Cat # RAB03813).

Specification

| | |
|---------------------|--|
| Product Description | Rabbit recombinant monoclonal antibody raised against recombinant human EPCAM protein. |
| Antibody Species | Rabbit |
| Immunogen | Original antibody is raised against recombinant protein corresponding to recombinant human EPCAM protein |
| Reactivity | Human |
| Specificity | Does not react with rat. |
| Form | Liquid |
| Conjugation | Unconjugated |
| Purification | Protein A affinity chromatography |
| Concentration | 0.2 mg/mL |
| Isotype | IgG |

| | |
|----------------------------|--|
| Recommend Usage | Immunohistochemistry (Formalin/PFA-fixed paraffin-embedded sections)(0.5-1 ug/mL for 30 min at RT) The optimal working dilution should be determined by the end user. |
| Storage Buffer | In PBS, 0.1 mg/ml BSA, 0.05% sodium azide |
| Storage Instruction | Store at 2~8°C. Aliquot to avoid repeated freezing and thawing. |
| Note | Optimal dilutions for each application to be determined by the researcher |

Applications

- Immunohistochemistry (Formalin/PFA-fixed paraffin-embedded sections)

Immunohistochemistry (Formalin-fixed paraffin-embedded sections) of human colon carcinoma with anti-EpCAM recombinant monoclonal antibody, clone EGP40/1556R (Cat # RAB03813).

Gene Info — EPCAM

| | |
|---------------------------|---|
| Entrez GeneID | 4072 |
| Protein Accession# | P16422 |
| Gene Name | EPCAM |
| Gene Alias | 17-1A, 323/A3, CD326, CO-17A, CO17-1A, EGP, EGP-2, EGP34, EGP40, ESA, Ep-CAM, GA733-2, HEA125, KS1/4, KSA, M4S1, MH99, MIC18, MK-1, MOC31, TACST-1, TACSTD1, TROP1, hEGP-2 |
| Gene Description | epithelial cell adhesion molecule |
| Omim ID | 185535 |
| Gene Ontology | Hyperlink |
| Gene Summary | This gene encodes a carcinoma-associated antigen and is a member of a family that includes at least two type I membrane proteins. This antigen is expressed on most normal epithelial cells and gastrointestinal carcinomas and functions as a homotypic calcium-independent cell adhesion molecule. The antigen is being used as a target for immunotherapy treatment of human carcinomas. Mutations in this gene result in congenital tufting enteropathy. [provided by RefSeq] |
| Other Designations | adenocarcinoma-associated antigen carcinoma-associated antigen GA733-2 human epithelial glycoprotein-2 membrane component, chromosome 4, surface marker (35kD glycoprotein) tumor-associated calcium signal transducer 1 |

Disease

- [Genetic Predisposition to Disease](#)
- [Ovarian Neoplasms](#)