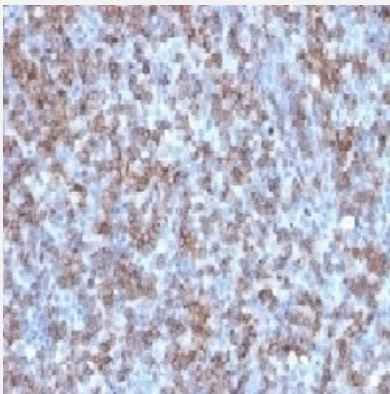


RecomAb™

CD8A recombinant monoclonal antibody, clone C8/1779R

Catalog # RAB03806 Size 100 ug

Applications



Immunohistochemistry (Formalin/PFA-fixed paraffin-embedded sections)

Immunohistochemistry (Formalin-fixed paraffin-embedded sections) of human tonsil with anti-CD8 recombinant monoclonal antibody, clone C8/1779R (Cat # RAB03806).

Specification

Product Description	Rabbit recombinant monoclonal antibody raised against recombinant full-length human CD8a protein
Antibody Species	Rabbit
Immunogen	Original antibody is raised against recombinant protein corresponding to recombinant full-length human CD8a protein
Reactivity	Human
Form	Liquid
Conjugation	Unconjugated
Purification	Protein G affinity chromatography
Concentration	0.2 mg/mL
Isotype	IgG

Recommend Usage	Flow cytometry (0.5-1 ug/million cells) Immunofluorescence (0.5-1 ug/mL) Immunohistochemistry (Formalin/PFA-fixed paraffin-embedded sections)(0.5-1 ug/mL for 30 min at RT) The optimal working dilution should be determined by the end user.
Storage Buffer	In PBS, 0.1 mg/ml BSA, 0.05% sodium azide
Storage Instruction	Store at 2~8°C. Aliquot to avoid repeated freezing and thawing.
Note	Optimal dilutions for each application to be determined by the researcher

Applications

- Immunohistochemistry (Formalin/PFA-fixed paraffin-embedded sections)

Immunohistochemistry (Formalin-fixed paraffin-embedded sections) of human tonsil with anti-CD8 recombinant monoclonal antibody, clone C8/1779R (Cat # RAB03806).

- Immunofluorescence

- Flow Cytometry

Gene Info — CD8A

Entrez GeneID	925
Protein Accession#	P01732
Gene Name	CD8A
Gene Alias	CD8, Leu2, MAL, p32
Gene Description	CD8a molecule
Omim ID	186910 608957
Gene Ontology	Hyperlink

Gene Summary

The CD8 antigen is a cell surface glycoprotein found on most cytotoxic T lymphocytes that mediates efficient cell-cell interactions within the immune system. The CD8 antigen acts as a coreceptor with the T-cell receptor on the T lymphocyte to recognize antigens displayed by an antigen presenting cell (APC) in the context of class I MHC molecules. The coreceptor functions as either a homodimer composed of two alpha chains, or as a heterodimer composed of one alpha and one beta chain. Both alpha and beta chains share significant homology to immunoglobulin variable light chains. This gene encodes the CD8 alpha chain isoforms. Multiple transcript variants encoding different isoforms have been found for this gene. [provided by RefSeq]

Other Designations

CD8 antigen alpha polypeptide|CD8 antigen, alpha polypeptide (p32)|Leu2 T-lymphocyte antigen|OKT8 T-cell antigen|T cell co-receptor|T-cell antigen Leu2|T-cell surface glycoprotein CD8 alpha chain|T-lymphocyte differentiation antigen T8/Leu-2|T8 T-cell ant

Pathway

- [Antigen processing and presentation](#)
- [Cell adhesion molecules \(CAMs\)](#)
- [Hematopoietic cell lineage](#)
- [Primary immunodeficiency](#)
- [T cell receptor signaling pathway](#)