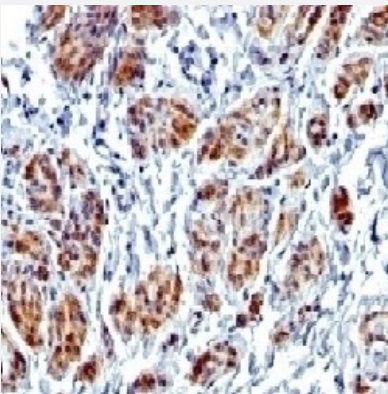


RecomAb™

# CALD1 recombinant monoclonal antibody, clone CALD1/1424R

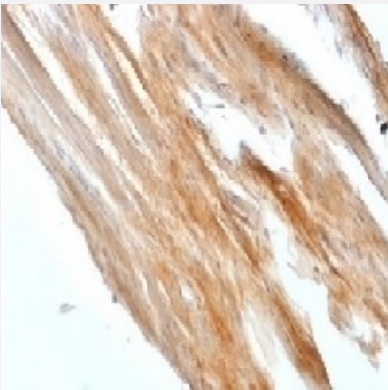
Catalog # RAB03789      Size 100 ug

## Applications



### Immunohistochemistry (Formalin/PFA-fixed paraffin-embedded sections)

Immunohistochemistry (Formalin-fixed paraffin-embedded sections) of human uterus with anti-Caldesmon recombinant monoclonal antibody, clone CALD1/1424R (Cat # RAB03789).



### Immunohistochemistry (Formalin/PFA-fixed paraffin-embedded sections)

Immunohistochemistry (Formalin-fixed paraffin-embedded sections) of rat uterus with anti-Caldesmon recombinant monoclonal antibody, clone CALD1/1424R (Cat # RAB03789).

## Specification

<b>Product Description</b>	Rabbit recombinant monoclonal antibody raised against human Caldesmon protein.
<b>Antibody Species</b>	Rabbit
<b>Immunogen</b>	Original antibody is raised against recombinant protein corresponding to human Caldesmon protein
<b>Reactivity</b>	Human
<b>Form</b>	Liquid

Conjugation	Unconjugated
Purification	Protein A affinity chromatography
Concentration	0.2 mg/mL
Isotype	IgG
Recommend Usage	Flow cytometry (0.5-1 ug/10 <sup>6</sup> cells) Immunofluorescence (1-2 ug/mL) Immunohistochemistry (Formalin/PFA-fixed paraffin-embedded sections)(1-2 ug/mL for 30 min at RT ) The optimal working dilution should be determined by the end user.
Storage Buffer	In PBS, 0.1 mg/ml BSA, 0.05% sodium azide
Storage Instruction	Store at 2~8°C. Aliquot to avoid repeated freezing and thawing.
Note	Optimal dilutions for each application to be determined by the researcher

## Applications

- Immunohistochemistry (Formalin/PFA-fixed paraffin-embedded sections)

Immunohistochemistry (Formalin-fixed paraffin-embedded sections) of human uterus with anti-Caldesmon recombinant monoclonal antibody, clone CALD1/1424R (Cat # RAB03789).

- Immunohistochemistry (Formalin/PFA-fixed paraffin-embedded sections)

Immunohistochemistry (Formalin-fixed paraffin-embedded sections) of rat uterus with anti-Caldesmon recombinant monoclonal antibody, clone CALD1/1424R (Cat # RAB03789).

- Immunofluorescence

- Flow Cytometry

## Gene Info — CALD1

Entrez GeneID	<a href="#">800</a>
Protein Accession#	<a href="#">Q05682</a>
Gene Name	CALD1
Gene Alias	CDM, H-CAD, L-CAD, MGC21352, NAG22

Gene Description	caldesmon 1
Omim ID	<a href="#">114213</a>
Gene Ontology	<a href="#">Hyperlink</a>
Gene Summary	<p>This gene encodes a calmodulin- and actin-binding protein that plays an essential role in the regulation of smooth muscle and nonmuscle contraction. The conserved domain of this protein possesses the binding activities to Ca(2+)-calmodulin, actin, tropomyosin, myosin, and phospholipids. This protein is a potent inhibitor of the actin-tropomyosin activated myosin MgATPase, and serves as a mediating factor for Ca(2+)-dependent inhibition of smooth muscle contraction. Alternative splicing of this gene results in multiple transcript variants encoding distinct isoforms. [provided by RefSeq]</p>
Other Designations	-

## Pathway

- [Vascular smooth muscle contraction](#)

## Disease

- [Diabetes Mellitus](#)
- [Diabetic Nephropathies](#)
- [Genetic Predisposition to Disease](#)
- [Tobacco Use Disorder](#)