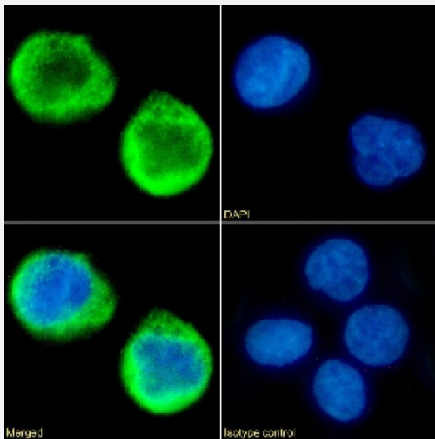


RecomAb™

# MS4A4A recombinant monoclonal antibody, clone 5C12

Catalog # RAB03711      Size 200 ug

## Applications



### Immunofluorescence

Immunofluorescence analysis of MS4A4A (green) in K562 cells lysates using human anti-MS4A4A recombinant monoclonal antibody, clone 5C12 (Cat # RAB02784), and DAPI (blue).

## Specification

Product Description	Rabbit recombinant monoclonal antibody raised against human MS4A4A.
Antibody Species	Rabbit
Immunogen	Original antibody is raised against recombinant protein corresponding to human MS4A4A
Reactivity	Human
Form	Liquid
Conjugation	Unconjugated
Concentration	batch dependent
Isotype	IgG lambda

**Recommend Usage**

Flow cytometry  
Immunofluorescence  
Immunoprecipitation  
The optimal working dilution should be determined by the end user.

**Storage Buffer**

In PBS with 0.02% Proclin 300

**Storage Instruction**

Store at 4°C for up to 3 months. For longer storage, aliquot and store at -20°C.  
Aliquot to avoid repeated freezing and thawing.

## Applications

- Immunofluorescence

Immunofluorescence analysis of MS4A4A (green) in K562 cells lysates using human anti-MS4A4A recombinant monoclonal antibody, clone 5C12 (Cat # RAB02784), and DAPI(blue).

- Immunoprecipitation

- Flow Cytometry

## Gene Info — MS4A4A

**Entrez GeneID**

[51338](#)

**Protein Accession#**

[Q96JQ5](#)

**Gene Name**

MS4A4A

**Gene Alias**

4SPAN1, CD20-L1, CD20L1, HDCME31P, MGC22311, MS4A4, MS4A7

**Gene Description**

membrane-spanning 4-domains, subfamily A, member 4

**Omim ID**

[606547](#)

**Gene Ontology**

[Hyperlink](#)

**Gene Summary**

This gene encodes a member of the membrane-spanning 4A gene family. Members of this nascent protein family are characterized by common structural features and similar intron/exon splice boundaries and display unique expression patterns among hematopoietic cells and nonlymphoid tissues. Alternative splicing of this gene results in several transcript variants; however, not all transcripts have been fully described. [provided by RefSeq]

**Other Designations**

Fc epsilon receptor beta subunit homolog|four-span transmembrane protein|membrane-spanning 4-domains, subfamily A, member 4A