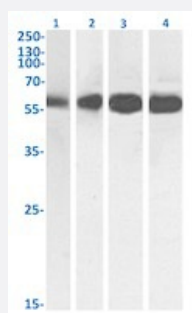


RecomAb™

TUBB3 recombinant monoclonal antibody, clone S11B

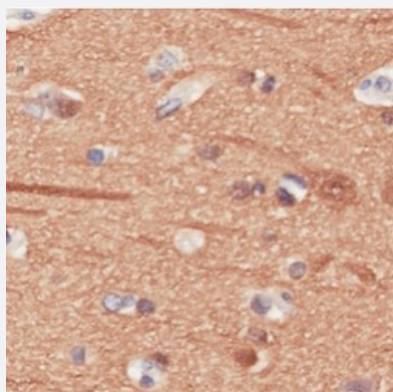
Catalog # RAB03698 Size 200 ug

Applications



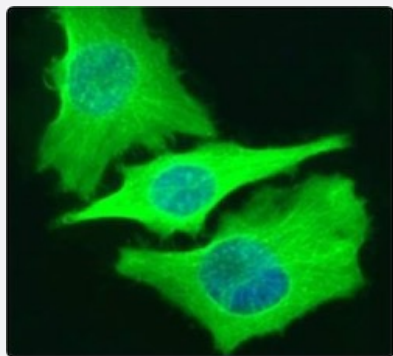
Western Blot

Western blot analysis of Lane 1: HeLa, Lane 2: A431, Lane3: HEK293 and Lane 4: MCF-7 cell lysates with TUBB3 recombinant monoclonal antibody, clone S11B (Cat # RAB03098).



Immunohistochemistry (Formalin/PFA-fixed paraffin-embedded sections)

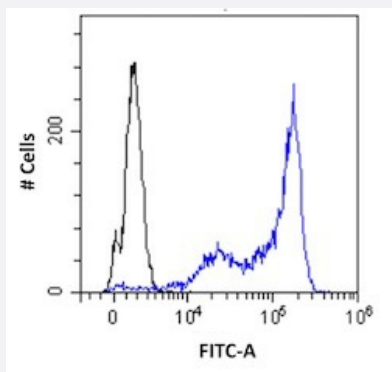
Immunohistochemical staining (Paraffin-embedded sections) of human cerebral cortex tissue with TUBB3 recombinant monoclonal antibody, clone S11B (Cat # RAB03098) at 4 ug/mL.



Immunofluorescence

Immunofluorescent staining of HeLa cells with TUBB3 recombinant monoclonal antibody, clone S11B (Cat # RAB03098).

Immunofluorescence analysis of paraformaldehyde fixed HeLa cells- permeabilized with 0.15% Triton stained with the chimeric r version of RAB03098 at 10 ug/ml for 1h followed by Alexa Fluor® 488 secondary antibody (1 ug/ml)- showing cytoplasmic staining. The nuclear stain is DAPI (blue). Panels show from left-right- top-bottom RAB03098- DAPI- merged channels and a negative control. The negative control was stained with unimmunized r followed by Alexa Fluor® 488 secondary antibody.



Flow Cytometry

Flow cytometric analysis of HeLa cells with the TUBB3 recombinant monoclonal antibody, clone S11B (Cat # RAB03098).

HeLa cells were stained with unimmunized r antibody (black line) or the rAB03098 (blue line) at a concentration of 10 ug/ml for 30 mins at RT. After washing- bound antibody was detected using anti-r JK (FITC-conjugate) antibody at 2 ug/ml and cells analyzed on a FACSCanto flow-cytometer.

Specification

Product Description	Rabbit recombinant monoclonal antibody raised against human TUBB3.
Antibody Species	Rabbit
Immunogen	Original antibody is raised against human MBP (microtubule-binding protein).
Reactivity	Human
Form	Liquid
Isotype	IgG lambda
Recommend Usage	ELISA Flow Cytometry Immunofluorescence Immunohistochemistry Western Blot The optimal working dilution should be determined by the end user.
Storage Buffer	In PBS with 0.02% Proclin 300
Storage Instruction	Store at 4°C for up to 3 months. For longer storage, aliquot and store at -20°C. Aliquot to avoid repeated freezing and thawing.

Applications

Western Blot

Western blot analysis of Lane 1: HeLa, Lane 2: A431, Lane3: HEK293 and Lane 4: MCF-7 cell lysates with TUBB3 recombinant monoclonal antibody, clone S11B (Cat # RAB03098).

- Immunohistochemistry (Formalin/PFA-fixed paraffin-embedded sections)

Immunohistochemical staining (Paraffin-embedded sections) of human cerebral cortex tissue with TUBB3 recombinant monoclonal antibody, clone S11B (Cat # RAB03098) at 4 ug/mL.

- Immunofluorescence

Immunofluorescent staining of HeLa cells with TUBB3 recombinant monoclonal antibody, clone S11B (Cat # RAB03098). Immunofluorescence analysis of paraformaldehyde fixed HeLa cells- permeabilized with 0.15% Triton stained with the chimeric r version of RAB03098 at 10 ug/ml for 1h followed by Alexa Fluor® 488 secondary antibody (1 ug/ml)- showing cytoplasmic staining. The nuclear stain is DAPI (blue). Panels show from left-right- top-bottom RAB03098- DAPI- merged channels and a negative control. The negative control was stained with unimmunized r followed by Alexa Fluor® 488 secondary antibody.

- Enzyme-linked Immunoabsorbent Assay

- Flow Cytometry

Flow cytometric analysis of HeLa cells with the TUBB3 recombinant monoclonal antibody, clone S11B (Cat # RAB03098). HeLa cells were stained with unimmunized r antibody (black line) or the r version of RAB03098 (blue line) at a concentration of 10 ug/ml for 30 mins at RT. After washing- bound antibody was detected using anti-r JK (FITC-conjugate) antibody at 2 ug/ml and cells analyzed on a FACSCanto flow-cytometer.

Gene Info — TUBB3

Entrez GeneID	10381
Gene Name	TUBB3
Gene Alias	MC1R, TUBB4, beta-4
Gene Description	tubulin, beta 3
Omim ID	602661
Gene Ontology	Hyperlink
Gene Summary	O
Other Designations	tubulin, beta, 4

Pathway

- [Gap junction](#)
- [Pathogenic Escherichia coli infection - EHEC](#)