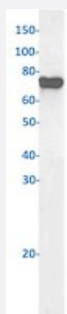


RecomAb™

# AFP recombinant monoclonal antibody, clone AF5

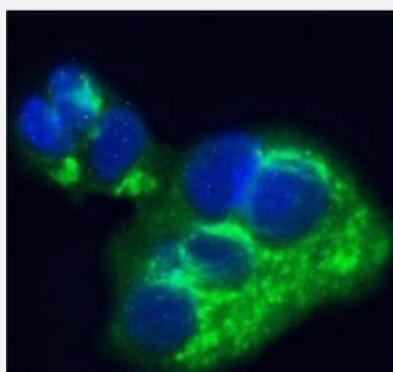
Catalog # RAB03658      Size 200 ug

## Applications



### Western Blot

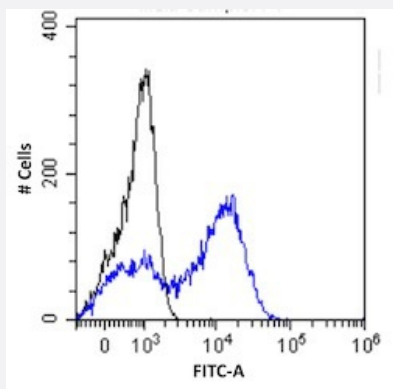
Western blot analysis of HepG2 cells lysates with AFP recombinant monoclonal antibody, clone AF5 (Cat # RAB03058).



### Immunofluorescence

Immunofluorescent staining of HepG2 cells with AFP recombinant monoclonal antibody, clone AF5 (Cat # RAB03058).

Immunofluorescence analysis of paraformaldehyde fixed HepG2 cells-permewith 0.15% Triton stained with the chimeric r version of RAB03058 at 10 ug/ml for 1h followed by Alexa Fluor® 488 secondary antibody (1 ug/ml)-showing cytoplasmic staining. The nuclear stain is DAPI (blue). The negative control was stained with unimmunized r followed by Alexa Fluor® 488 secondary antibody.



### Flow Cytometry

Flow cytometric analysis of HepG2 cells with AFP recombinant monoclonal antibody, clone AF5 (Cat # RAB03058).

HepG2 cells were stained with unimmunized r antibody (black line) or the rmeric version of RAB03058 (blue line) at a concentration of 10 ug/ml for 30 mins at RT. After washing- bound antibody was detected using anti-r JK (FITC-conjugate) antibody (129936) at 2 ug/ml and cells analyzed on a FACSCanto flow-cytometer.

## Specification

<b>Product Description</b>	Rabbit recombinant monoclonal antibody raised against human AFP.
<b>Antibody Species</b>	Rabbit
<b>Immunogen</b>	Original antibody is raised against human amniotic fluid containing AFP.
<b>Reactivity</b>	Human
<b>Form</b>	Liquid
<b>Conjugation</b>	Unconjugated
<b>Concentration</b>	batch dependent
<b>Isotype</b>	IgG kappa
<b>Recommend Usage</b>	Flow Cytometry Immunofluorescence Western Blot The optimal working dilution should be determined by the end user.
<b>Storage Buffer</b>	In PBS with 0.02% Proclin 300
<b>Storage Instruction</b>	Store at 4°C for up to 3 months. For longer storage, aliquot and store at -20°C. Aliquot to avoid repeated freezing and thawing.

## Applications

- Western Blot

Western blot analysis of HepG2 cells lysates with AFP recombinant monoclonal antibody, clone AF5 (Cat # RAB03058).

- Immunofluorescence

Immunofluorescent staining of HepG2 cells with AFP recombinant monoclonal antibody, clone AF5 (Cat # RAB03058). Immunofluorescence analysis of paraformaldehyde fixed HepG2 cells- permeabilized with 0.15% Triton stained with the chimeric r version of RAB03058 at 10 ug/ml for 1h followed by Alexa Fluor® 488 secondary antibody (1 ug/ml)- showing cytoplasmic staining. The nuclear stain is DAPI (blue). The negative control was stained with unimmunized r followed by Alexa Fluor® 488 secondary antibody.

- Flow Cytometry

Flow cytometric analysis of HepG2 cells with AFP recombinant monoclonal antibody, clone AF5 (Cat # RAB03058). HepG2 cells were stained with unimmunized r antibody (black line) or the rmeric version of RAB03058 (blue line) at a concentration of 10 ug/ml for 30 mins at RT. After washing- bound antibody was detected using anti-r JK (FITC-conjugate) antibody (129936) at 2 ug/ml and cells analyzed on a FACSCanto flow-cytometer.

## Gene Info — AFP

**Entrez GeneID** [174](#)**Gene Name** AFP**Gene Alias** FETA, HPAFP**Gene Description** alpha-fetoprotein**Omim ID** [104150](#)**Gene Ontology** [Hyperlink](#)

**Gene Summary**

This gene encodes alpha-fetoprotein, a major plasma protein produced by the yolk sac and the liver during fetal life. Alpha-fetoprotein expression in adults is often associated with hepatoma or teratoma. However, hereditary persistence of alpha-fetoprotein may also be found in individuals with no obvious pathology. The protein is thought to be the fetal counterpart of serum albumin, and the alpha-fetoprotein and albumin genes are present in tandem in the same transcriptional orientation on chromosome 4. Alpha-fetoprotein is found in monomeric as well as dimeric and trimeric forms, and binds copper, nickel, fatty acids and bilirubin. The level of alpha-fetoprotein in amniotic fluid is used to measure renal loss of protein to screen for spina bifida and anencephaly. [provided by RefSeq]

**Other Designations** OTTHUMP00000160480|alpha-1-fetoprotein|alpha-fetoglobulin

## Disease

- [Carcinoma](#)
- [Liver Cirrhosis](#)
- [Liver Neoplasms](#)