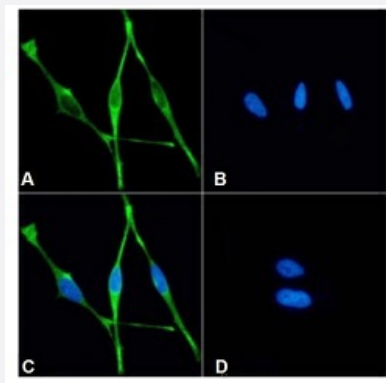


RecomAb™

MSLN recombinant monoclonal antibody, clone 11-25

Catalog # RAB03642 Size 200 ug

Applications

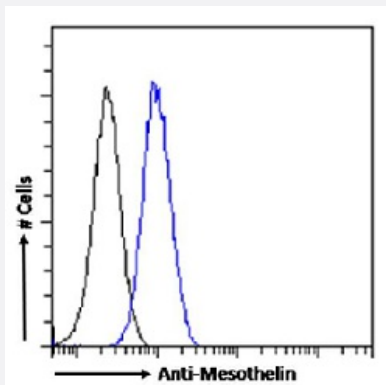


Immunofluorescence

Immunofluorescent staining of HeLa cells with MSLN recombinant monoclonal antibody, clone 11-25 (Cat # RAB03642)

Immunofluorescence analysis of paraformaldehyde fixed HeLa cells stained with the chimeric r version of RAB03642 at a dilution of 1:100 for 1h followed by Alexa Fluor® 488 secondary antibody at a dilution of 1:1000, showing membrane staining. The nuclear stain is DAPI (blue). The isotype control was stained with an unknown specificity antibody followed by Alexa Fluor® 488 secondary antibody.

- (A) RAB03642
- (B) DAPI
- (C) Merged channels
- (D) Isotype control



Flow Cytometry

Flow cytometric analysis of HeLa cells with MSLN recombinant monoclonal antibody, clone 11-25 (Cat # RAB03642).

Paraformaldehyde fixed HeLa cells permeabilized with 0.5% Triton were stained with anti-unknown specificity antibody (isotype control-black line) or the r version of RAB03642 (blue line) at a dilution of 1:100 for 1h at RT. After washing the bound antibody was detected using a goat anti-r AlexaFluor® 488 antibody at a dilution of 1:1000 and cells analyzed using a FACSCanto flow-cytometer.

Specification

Product Description

Rabbit recombinant monoclonal antibody raised against human MSLN.

Antibody Species	Rabbit
Immunogen	Original antibody is raised against the purified recombinant protein corresponding to human MSLN.
Reactivity	Human
Form	Liquid
Isotype	IgG
Recommend Usage	ELISA Flow Cytometry Immunofluorescence Immunoprecipitation The optimal working dilution should be determined by the end user.
Storage Buffer	In PBS (0.02% Proclin 300)
Storage Instruction	Store at 4°C for 3 months. For long term storage, aliquot and store at -20°C. Aliquot to avoid repeated freezing and thawing.

Applications

- Immunofluorescence

Immunofluorescent staining of HeLa cells with MSLN recombinant monoclonal antibody, clone 11-25 (Cat # RAB03642). Immunofluorescence analysis of paraformaldehyde fixed HeLa cells stained with the chimeric r version of RAB03642 at a dilution of 1:100 for 1h followed by Alexa Fluor® 488 secondary antibody at a dilution of 1:1000, showing membrane staining. The nuclear stain is DAPI (blue). The isotype control was stained with an unknown specificity antibody followed by Alexa Fluor® 488 secondary antibody.

- (A) RAB03642
- (B) DAPI
- (C) Merged channels
- (D) Isotype control

- Immunoprecipitation

- Enzyme-linked Immunoabsorbent Assay

- Flow Cytometry

Flow cytometric analysis of HeLa cells with MSLN recombinant monoclonal antibody, clone 11-25 (Cat # RAB03642). Paraformaldehyde fixed HeLa cells permeabilized with 0.5% Triton were stained with anti-unknown specificity antibody (isotype control-black line) or the r version of RAB03642 (blue line) at a dilution of 1:100 for 1h at RT. After washing the bound antibody was detected using a goat anti-r AlexaFluor® 488 antibody at a dilution of 1:1000 and cells analyzed using a FACSCanto flow-cytometer.

Gene Info — MSLN

Entrez GeneID [10232](#)**Gene Name** MSLN**Gene Alias** CAK1, MPF, SMR**Gene Description** mesothelin**Omim ID** [601051](#)**Gene Ontology** [Hyperlink](#)

Gene Summary An antibody that reacts with ovarian cancers and mesotheliomas was used to isolate a cell surface antigen named mesothelin. Although the function of mesothelin is unknown, it may play a role in cellular adhesion and is present on mesothelium, mesotheliomas, and ovarian cancers. This gene encodes a preproprotein that is cleaved into two products, megakaryocyte potentiating factor and mesothelin. Alternative splicing results in multiple transcript variants. [provided by RefSeq]

Other Designations megakaryocyte potentiating factor

Disease

- [Adenocarcinoma](#)
- [Asbestosis](#)
- [Esophageal Neoplasms](#)
- [Mesothelioma](#)
- [Occupational Diseases](#)
- [Pleural Neoplasms](#)