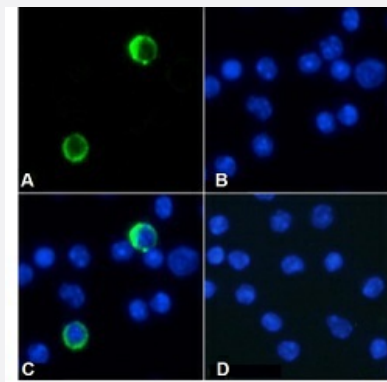


RecomAb™

Ly6g recombinant monoclonal antibody, clone RB6-8C5

Catalog # RAB03634 Size 200 ug

Applications

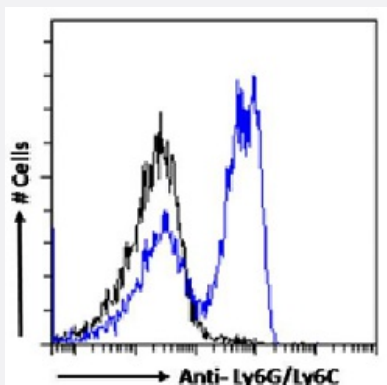


Immunofluorescence

Immunofluorescent staining of mouse splenocytes with Ly6g recombinant monoclonal antibody, clone RB6-8C5 (Cat # RAB03634).

Immunofluorescence analysis of paraformaldehyde fixed mouse splenocytes immobilized on Shi-fix™ coverslips and stained with the chimeric r version of RAB03634 at 10 ug/mL followed by Alexa Fluor® 488 secondary antibody (2 ug/mL), showing membrane staining in subset of cells. The nuclear stain is DAPI (blue). The isotype control was stained with anti-Fluorescein antibody followed by Alexa Fluor® 488 secondary antibody.

- (A) RAB03627
- (B) DAPI
- (C) Merged channels
- (D) Isotype control



Flow Cytometry

Flow cytometric analysis of mouse splenocytes with Ly6g recombinant monoclonal antibody, clone RB6-8C5 (Cat # RAB03634).

Mouse splenocytes were stained with anti-Fluorescein IgG antibody (isotype control-black line) or the r version of RAB03634 (blue line) at a dilution of 1:100 for 1h at RT. After washing the bound antibody was detected using a goat anti-r AlexaFluor® 488 antibody at a dilution of 1:1000 and cells analyzed using a FACSCanto flow-cytometer.

Specification

Product Description	Rabbit recombinant monoclonal antibody raised against mouse Ly6g.
Antibody Species	Rabbit

Immunogen	Original antibody is raised against popliteal lymph node.
Reactivity	Mouse
Form	Liquid
Isotype	IgG
Recommend Usage	Flow Cytometry Immunofluorescence Immunohistochemistry Western Blot The optimal working dilution should be determined by the end user.
Storage Buffer	In PBS (0.02% Proclin 300)
Storage Instruction	Store at 4°C for 3 months. For long term storage, aliquot and store at -20°C. Aliquot to avoid repeated freezing and thawing.

Applications

- Western Blot
- Immunohistochemistry
- Immunofluorescence

Immunofluorescent staining of mouse splenocytes with Ly6g recombinant monoclonal antibody, clone RB6-8C5 (Cat # RAB03634).

Immunofluorescence analysis of paraformaldehyde fixed mouse splenocytes immobilized on Shi-fix™ coverslips and stained with the chimeric r version of RAB03634 at 10 ug/mL followed by Alexa Fluor® 488 secondary antibody (2 ug/mL), showing membrane staining in subset of cells. The nuclear stain is DAPI (blue). The isotype control was stained with anti-Fluorescein antibody followed by Alexa Fluor® 488 secondary antibody.

- (A) RAB03627
(B) DAPI
(C) Merged channels
(D) Isotype control

- Flow Cytometry

Flow cytometric analysis of mouse splenocytes with Ly6g recombinant monoclonal antibody, clone RB6-8C5 (Cat # RAB03634). Mouse splenocytes were stained with anti-Fluorescein IgG antibody (isotype control-black line) or the r version of RAB03634 (blue line) at a dilution of 1:100 for 1h at RT. After washing the bound antibody was detected using a goat anti-r AlexaFluor® 488 antibody at a dilution of 1:1000 and cells analyzed using a FACSCanto flow-cytometer.

Gene Info — Ly6g

Entrez GeneID	546644
Gene Name	Ly6g
Gene Alias	Gr-1, Gr1, Ly-6G
Gene Description	lymphocyte antigen 6 complex, locus G
Gene Ontology	Hyperlink
Gene Summary	O
Other Designations	-