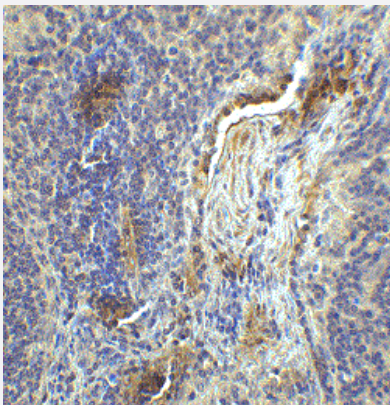


RecomAb™

LAG3 recombinant monoclonal antibody, clone 2B11

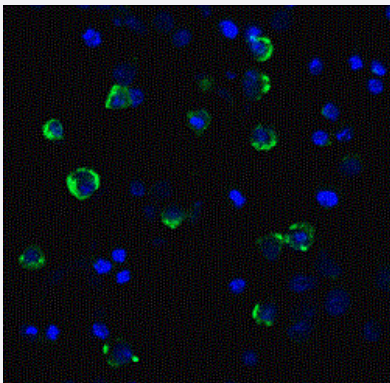
Catalog # RAB03625 Size 100 ug

Applications



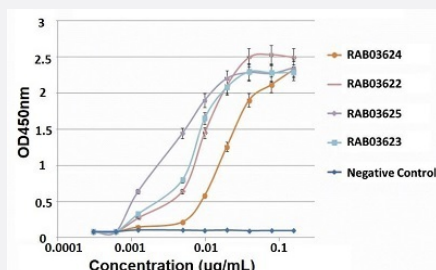
Immunohistochemistry (Formalin/PFA-fixed paraffin-embedded sections)

Immunohistochemical staining of human lymph node tissue with LAG3 recombinant monoclonal antibody, clone 2B11 (Cat # RAB03625) at 1 ug/mL.



Immunofluorescence

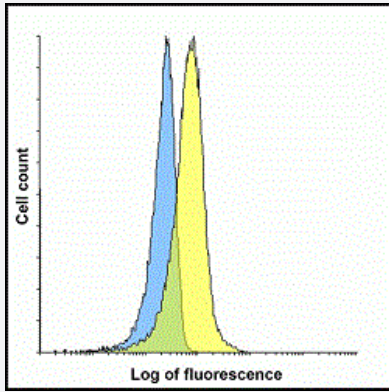
Immunofluorescent staining of HEK293 cells with LAG3 recombinant monoclonal antibody, clone 2B11 (Cat # RAB03625) at 5 ug/mL.



Enzyme-linked Immunoabsorbent Assay

ELISA analysis of LAG3 recombinant monoclonal antibody, clone 2B11 (Cat# RAB03625).

ELISA analysis of LAG3 sdAbs to detect recombinant LAG3 (extracellular domain) coated at 1 ug/mL. sdAbs are detected with a mouse mAb against a C-terminal myc-tag followed by a goat anti-mouse IgG-HRP conjugate.



Flow Cytometry

Flow cytometric analysis of HEK293 cells with LAG3 recombinant monoclonal antibody, clone 2B11 (Cat # RAB03625).

Flow cytometry analysis of LAG3 overexpressing HEK293 cells using LAG3 single domain antibody at 1 ug/mL.

Blue: untransfected HEK293 cells

Yellow: LAG3 overexpressing HEK293 cells

Specification

Product Description	Llama recombinant monoclonal antibody raised against human LAG3.
Antibody Species	Llama
Immunogen	Original antibody is raised against recombinant protein corresponding to the amino acids 23-434 of human LAG3.
Reactivity	Human
Form	Liquid
Purification	Affinity purification
Concentration	1 mg/mL
Isotype	sdAb
Recommend Usage	ELISA (start at 0.1 ug/mL) Flow Cytometry (start at 1 ug/mL) Immunofluorescence (start at 5 ug/mL) Immunohistochemistry (Formalin/PFA-fixed paraffin-embedded sections) (start at 1 ug/mL) The optimal working dilution should be determined by the end user.
Storage Buffer	In PBS
Storage Instruction	Store at -20°C for 1 year. Aliquot to avoid repeated freezing and thawing.

Applications

- Immunohistochemistry (Formalin/PFA-fixed paraffin-embedded sections)

Immunohistochemical staining of human lymph node tissue with LAG3 recombinant monoclonal antibody, clone 2B11 (Cat # RAB03625) at 1 ug/mL.

- Immunofluorescence

Immunofluorescent staining of HEK293 cells with LAG3 recombinant monoclonal antibody, clone 2B11 (Cat # RAB03625) at 5 ug/mL.

- Enzyme-linked Immunoabsorbent Assay

ELISA analysis of LAG3 recombinant monoclonal antibody, clone 2B11 (Cat# RAB03625).

ELISA analysis of LAG3 sdAbs to detect recombinant LAG3 (extracellular domain) coated at 1 ug/mL. sdAbs are detected with a mouse mAb against a C-terminal myc-tag followed by a goat anti-mouse IgG-HRP conjugate.

- Flow Cytometry

Flow cytometric analysis of HEK293 cells with LAG3 recombinant monoclonal antibody, clone 2B11 (Cat # RAB03625).

Flow cytometry analysis of LAG3 overexpressing HEK293 cells using LAG3 single domain antibody at 1 ug/mL.

Blue: untransfected HEK293 cells

Yellow: LAG3 overexpressing HEK293 cells

Gene Info — LAG3

Entrez GeneID [3902](#)

Gene Name LAG3

Gene Alias CD223

Gene Description lymphocyte-activation gene 3

Omim ID [153337](#)

Gene Ontology [Hyperlink](#)

Gene Summary Lymphocyte-activation protein 3 belongs to Ig superfamily and contains 4 extracellular Ig-like domains. The LAG3 gene contains 8 exons. The sequence data, exon/intron organization, and chromosomal localization all indicate a close relationship of LAG3 to CD4. [provided by RefSeq]

Other Designations lymphocyte-activation protein 3

Disease

- [Asthma](#)
- [Diabetes Mellitus](#)

- [Genetic Predisposition to Disease](#)
- [Hematologic Diseases](#)
- [Hepatitis C](#)
- [Immune System Diseases](#)
- [Multiple Sclerosis](#)
- [Occupational Diseases](#)