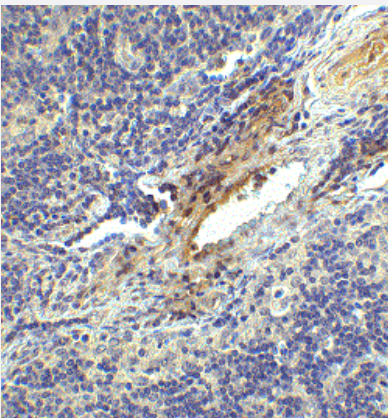


RecomAb™

# LAG3 recombinant monoclonal antibody, clone 2A11

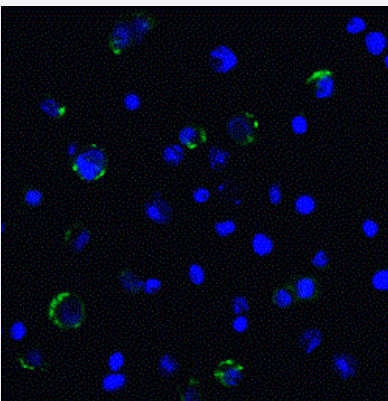
Catalog # RAB03624      Size 100 ug

## Applications



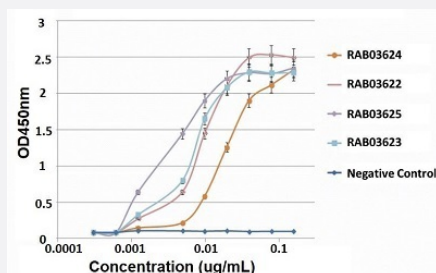
### Immunohistochemistry (Formalin/PFA-fixed paraffin-embedded sections)

Immunohistochemical staining of human lymph node tissue with LAG3 recombinant monoclonal antibody, clone 2A11 (Cat # RAB03624) at 1 ug/mL.



### Immunofluorescence

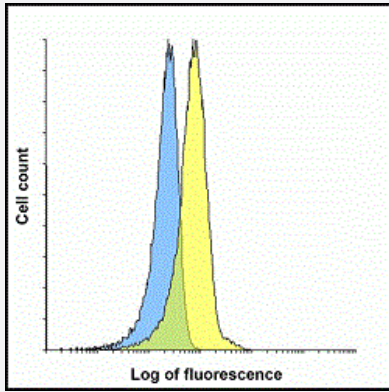
Immunofluorescent staining of HEK293 cells with LAG3 recombinant monoclonal antibody, clone 2A11 (Cat # RAB03624) at 5 ug/mL.



### Enzyme-linked Immunoabsorbent Assay

ELISA analysis of LAG3 recombinant monoclonal antibody, clone 2A11 (Cat# RAB03624).

ELISA analysis of LAG3 sdAbs to detect recombinant LAG3 (extracellular domain) coated at 1 ug/mL. sdAbs are detected with a mouse mAb against a C-terminal myc-tag followed by a goat anti-mouse IgG-HRP conjugate.



## Flow Cytometry

Flow cytometric analysis of HEK293 cells with LAG3 recombinant monoclonal antibody, clone 2A11 (Cat # RAB03624).

Flow cytometry analysis of LAG3 overexpressing HEK293 cells using LAG3 single domain antibody at 1 ug/ml.

Blue: untransfected HEK293 cells

Yellow: LAG3 overexpressing HEK293 cells

## Specification

<b>Product Description</b>	Llama recombinant monoclonal antibody raised against human LAG3.
<b>Antibody Species</b>	Llama
<b>Immunogen</b>	Original antibody is raised against recombinant protein corresponding to the amino acids 23-434 of human LAG3.
<b>Reactivity</b>	Human
<b>Form</b>	Liquid
<b>Purification</b>	Affinity purification
<b>Concentration</b>	1 mg/mL
<b>Isotype</b>	sdAb
<b>Recommend Usage</b>	ELISA (start at 0.1 ug/mL) Flow Cytometry (start at 1 ug/mL) Immunofluorescence (start at 5 ug/mL) Immunohistochemistry (Formalin/PFA-fixed paraffin-embedded sections) (start at 1 ug/mL) The optimal working dilution should be determined by the end user.
<b>Storage Buffer</b>	In PBS
<b>Storage Instruction</b>	Store at -20°C for 1 year. Aliquot to avoid repeated freezing and thawing.

## Applications

- Immunohistochemistry (Formalin/PFA-fixed paraffin-embedded sections)

Immunohistochemical staining of human lymph node tissue with LAG3 recombinant monoclonal antibody, clone 2A11 (Cat # RAB03624) at 1 ug/mL.

- Immunofluorescence

Immunofluorescent staining of HEK293 cells with LAG3 recombinant monoclonal antibody, clone 2A11 (Cat # RAB03624) at 5 ug/mL.

- Enzyme-linked Immunoabsorbent Assay

ELISA analysis of LAG3 recombinant monoclonal antibody, clone 2A11 (Cat# RAB03624).

ELISA analysis of LAG3 sdAbs to detect recombinant LAG3 (extracellular domain) coated at 1 ug/mL. sdAbs are detected with a mouse mAb against a C-terminal myc-tag followed by a goat anti-mouse IgG-HRP conjugate.

- Flow Cytometry

Flow cytometric analysis of HEK293 cells with LAG3 recombinant monoclonal antibody, clone 2A11 (Cat # RAB03624).

Flow cytometry analysis of LAG3 overexpressing HEK293 cells using LAG3 single domain antibody at 1 ug/ml.

Blue: untransfected HEK293 cells

Yellow: LAG3 overexpressing HEK293 cells

## Gene Info — LAG3

Entrez GeneID	<a href="#">3902</a>
Gene Name	LAG3
Gene Alias	CD223
Gene Description	lymphocyte-activation gene 3
Omim ID	<a href="#">153337</a>
Gene Ontology	<a href="#">Hyperlink</a>
Gene Summary	Lymphocyte-activation protein 3 belongs to Ig superfamily and contains 4 extracellular Ig-like domains. The LAG3 gene contains 8 exons. The sequence data, exon/intron organization, and chromosomal localization all indicate a close relationship of LAG3 to CD4. [provided by RefSeq]
Other Designations	lymphocyte-activation protein 3

## Disease

- [Asthma](#)
- [Diabetes Mellitus](#)

- [Genetic Predisposition to Disease](#)
- [Hematologic Diseases](#)
- [Hepatitis C](#)
- [Immune System Diseases](#)
- [Multiple Sclerosis](#)
- [Occupational Diseases](#)