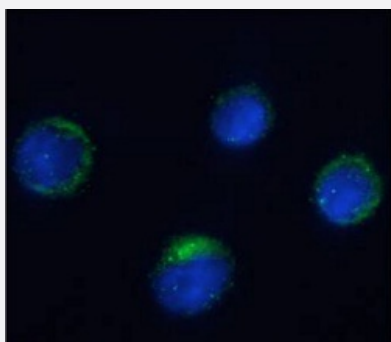


RecomAb™

ITGB7 recombinant monoclonal antibody, clone FIB27

Catalog # RAB03611 Size 200 ug

Applications



Immunofluorescence

Immunofluorescent staining of human peripheral blood monocytes (PBM) with ITGB7 recombinant monoclonal antibody, clone FIB27 (Cat # RAB03611). Immunofluorescence analysis of paraformaldehyde fixed human PBM cells on Shi-fix™ coverslips permeabilized with 0.15% Triton and stained with the chimeric r version of RAB03611 at 10 ug/mL for 1h followed by Alexa Fluor® 488 secondary antibody (1 ug/mL), showing membrane staining. The nuclear stain is DAPI (blue). The isotype control was stained with anti-Fluorescein antibody followed by Alexa Fluor® 488 secondary antibody.

Specification

Product Description Rabbit recombinant monoclonal antibody raised against human ITGB7.

Antibody Species Rabbit

Immunogen Original antibody is raised against TK1 cells.

Reactivity Human, Mouse

Form Liquid

Isotype IgG

Recommend Usage Blocking
Flow Cytometry
Immunofluorescence
Immunoprecipitation
The optimal working dilution should be determined by the end user.

Storage Buffer In PBS (0.02% Proclin 300)

Storage Instruction

Store at 4°C for 3 months. For long term storage, aliquot and store at -20°C.
Aliquot to avoid repeated freezing and thawing.

Applications

- Immunofluorescence

Immunofluorescent staining of human peripheral blood monocytes (PBM) with ITGB7 recombinant monoclonal antibody, clone FIB27 (Cat # RAB03611).

Immunofluorescence analysis of paraformaldehyde fixed human PBM cells on Shi-fix™ coverslips permeabilized with 0.15% Triton and stained with the chimeric r version of RAB03611 at 10 ug/mL for 1h followed by Alexa Fluor® 488 secondary antibody (1 ug/mL), showing membrane staining. The nuclear stain is DAPI (blue). The isotype control was stained with anti-Fluorescein antibody followed by Alexa Fluor® 488 secondary antibody.

- Immunoprecipitation

- Blocking

- Flow Cytometry

Gene Info — ITGB7

Entrez GeneID	3695
---------------	----------------------

Gene Name	ITGB7
-----------	-------

Gene Alias	-
------------	---

Gene Description	integrin, beta 7
------------------	------------------

Omim ID	147559
---------	------------------------

Gene Ontology	Hyperlink
---------------	---------------------------

Gene Summary	O
--------------	---

Other Designations	integrin beta 7 subunit
--------------------	-------------------------

Pathway

- [Arrhythmogenic right ventricular cardiomyopathy \(ARVC\)](#)
- [Cell adhesion molecules \(CAMs\)](#)

- [ECM-receptor interaction](#)
- [Focal adhesion](#)
- [Hypertrophic cardiomyopathy \(HCM\)](#)
- [Regulation of actin cytoskeleton](#)

Disease

- [Asthma](#)