

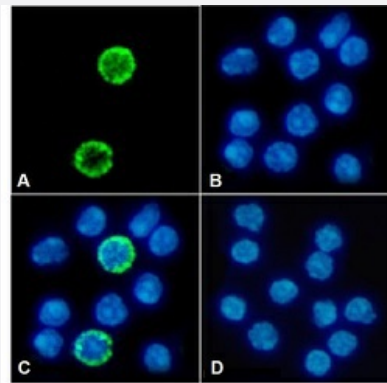
RecomAb™

Il2rg recombinant monoclonal antibody, clone 3E12

Catalog # RAB03582 Size 200 ug

Applications

Immunofluorescence



Immunofluorescent staining of mouse splenocytes with Il2rg recombinant monoclonal antibody, clone 3E12 (Cat # RAB03582).

Immunofluorescence analysis of paraformaldehyde fixed mouse splenocytes on Shi-fix™ coverslips stained with the chimeric r version of RAB03582 at 10 ug/mL for 1h followed by Alexa Fluor® 488 secondary antibody (2 ug/mL), showing membrane staining. The nuclear stain is DAPI (blue). The isotype control was an unknown specificity antibody followed by staining with Alexa Fluor® 488 secondary antibody.

- (A) RAB03582
- (B) DAPI
- (C) Merged channels
- (D) Isotype control

Specification

Product Description	Rabbit recombinant monoclonal antibody raised against mouse Il2rg.
Antibody Species	Rabbit
Immunogen	Original antibody is raised against rat myeloma cell line YB2/0, expressing murine cytoplasmic-tailless Il2rg (YB2/0-myt).
Reactivity	Mouse
Form	Liquid
Isotype	IgG

Recommend Usage

Blocking
Flow Cytometry
Immunofluorescence
Immunoprecipitation
The optimal working dilution should be determined by the end user.

Storage Buffer

In PBS (0.02% Proclin 300)

Storage Instruction

Store at 4°C for 3 months. For long term storage, aliquot and store at -20°C.
Aliquot to avoid repeated freezing and thawing.

Applications

● Immunofluorescence

Immunofluorescent staining of mouse splenocytes with Il2rg recombinant monoclonal antibody, clone 3E12 (Cat # RAB03582). Immunofluorescence analysis of paraformaldehyde fixed mouse splenocytes on Shi-fix™ coverslips stained with the chimeric r version of RAB03582 at 10 ug/mL for 1h followed by Alexa Fluor® 488 secondary antibody (2 ug/mL), showing membrane staining. The nuclear stain is DAPI (blue). The isotype control was an unknown specificity antibody followed by staining with Alexa Fluor® 488 secondary antibody.

(A) RAB03582

(B) DAPI

(C) Merged channels

(D) Isotype control

● Immunoprecipitation

● Blocking

● Flow Cytometry

Gene Info — Il2rg

Entrez GeneID

[16186](#)

Gene Name

Il2rg

Gene Alias

CD132, [g]c, gamma(c)

Gene Description

interleukin 2 receptor, gamma chain

Gene Ontology

[Hyperlink](#)

Gene Summary

O

Other Designations

common cytokine receptor gamma chain|common gamma chain|gamma C receptor