

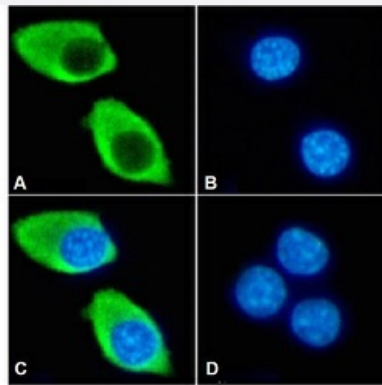
RecomAb™

## Il2rb recombinant monoclonal antibody, clone 5H4

Catalog # RAB03580      Size 200 ug

### Applications

#### Immunofluorescence



Immunofluorescent staining of RAW264.7 cells with Il2rb recombinant monoclonal antibody, clone 5H4 (Cat # RAB03580).

Immunofluorescence analysis of paraformaldehyde fixed RAW264.7 cells on Shi-fix™ coverslips stained with the chimeric r version of RAB03580 at 10 ug/mL for 1h followed by Alexa Fluor® 488 secondary antibody (2 ug/mL), showing membrane staining. The nuclear stain is DAPI (blue). The isotype control was an unknown specificity antibody followed by staining with Alexa Fluor® 488 secondary antibody.

- (A) RAB03580
- (B) DAPI
- (C) Merged channels
- (D) Isotype control

### Specification

Product Description	Rabbit recombinant monoclonal antibody raised against mouse Il2rb.
Antibody Species	Rabbit
Immunogen	Original antibody is raised against rat myeloma cell line YB2/0, expressing truncated murine Il2rb.
Reactivity	Mouse
Form	Liquid
Isotype	IgG
Recommend Usage	Flow Cytometry Immunofluorescence The optimal working dilution should be determined by the end user.

**Storage Buffer**

In PBS (0.02% Proclin 300)

**Storage Instruction**

Store at 4°C for 3 months. For long term storage, aliquot and store at -20°C.  
Aliquot to avoid repeated freezing and thawing.

## Applications

- Immunofluorescence

Immunofluorescent staining of RAW264.7 cells with Il2rb recombinant monoclonal antibody, clone 5H4 (Cat # RAB03580). Immunofluorescence analysis of paraformaldehyde fixed RAW264.7 cells on Shi-fix™ coverslips stained with the chimeric r version of RAB03580 at 10 ug/mL for 1h followed by Alexa Fluor® 488 secondary antibody (2 ug/mL), showing membrane staining. The nuclear stain is DAPI (blue). The isotype control was an unknown specificity antibody followed by staining with Alexa Fluor® 488 secondary antibody.

(A) RAB03580

(B) DAPI

(C) Merged channels

(D) Isotype control

- Flow Cytometry

## Gene Info — Il2rb

**Entrez GeneID**[16185](#)**Gene Name**

Il2rb

**Gene Alias**

CD122, IL-15Rbeta, IL15Rbeta, IL-2/15Rbeta, IL-2Rbeta, MGC118674, p70

**Gene Description**

interleukin 2 receptor, beta chain

**Gene Ontology**[Hyperlink](#)**Gene Summary**

O

**Other Designations**

IL-15 receptor beta chain|IL-2 receptor beta chain|IL-2/15 receptor-beta