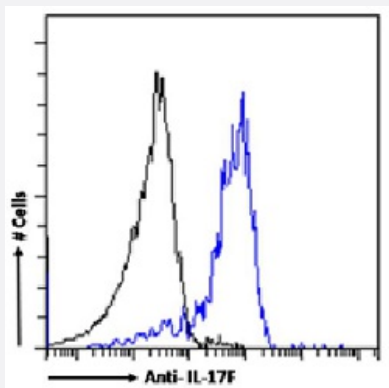


RecomAb™

IL17f recombinant monoclonal antibody, clone 8F5.1A9

Catalog # RAB03568 Size 200 ug

Applications



Flow Cytometry

Flow cytometric analysis of mouse splenocytes with IL17f recombinant monoclonal antibody, clone 8F5.1A9 (Cat # RAB03568).

The mouse splenocytes were fixed using 2% PFA and permeabilized 0.5% Triton and stained with anti-Fluorescein IgG antibody (isotype control-black line) or the r version of RAB03568 (blue line) at a dilution of 1:100 for 1h at RT. After washing the bound antibody was detected using a goat anti-mouse IgG AlexaFluor® 488 antibody at a dilution of 1:1000 and cells analyzed using a FACSCanto flow-cytometer.

Specification

Product Description	Rabbit recombinant monoclonal antibody raised against mouse IL17f.
Antibody Species	Rabbit
Immunogen	Original antibody is raised against IL-17F coupled to ovalbumin to generate a highly immunogenic complex.
Reactivity	Mouse
Form	Liquid
Isotype	IgG
Recommend Usage	Flow Cytometry The optimal working dilution should be determined by the end user.
Storage Buffer	In PBS (0.02% Proclin 300)

Storage Instruction

Store at 4°C for 3 months. For long term storage, aliquot and store at -20°C.
Aliquot to avoid repeated freezing and thawing.

Applications

- Flow Cytometry

Flow cytometric analysis of mouse splenocytes with Il17f recombinant monoclonal antibody, clone 8F5.1A9 (Cat # RAB03568). The mouse splenocytes were fixed using 2% PFA and permeabilized 0.5% Triton and stained with anti-Fluorescein IgG antibody (isotype control-black line) or the r version of RAB03568 (blue line) at a dilution of 1:100 for 1h at RT. After washing the bound antibody was detected using a goat anti-mouse IgG AlexaFluor® 488 antibody at a dilution of 1:1000 and cells analyzed using a FACSCanto flow-cytometer.

Gene Info — Il17f

Entrez GeneID	257630
---------------	------------------------

Gene Name	Il17f
-----------	-------

Gene Alias	C87042, IL-17F
------------	----------------

Gene Description	interleukin 17F
------------------	-----------------

Gene Ontology	Hyperlink
---------------	---------------------------

Other Designations	-
--------------------	---