

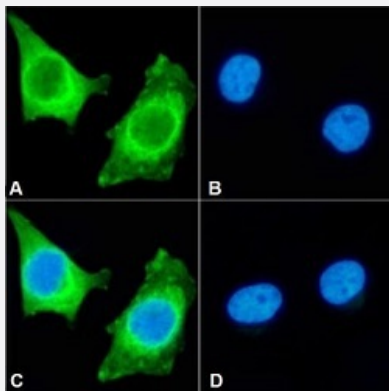
RecomAb™

HSPB1 recombinant monoclonal antibody, clone SAIC-23E-30

Catalog # RAB03543 Size 200 ug

Applications

Immunofluorescence



Immunofluorescent staining of HeLa cells with HSPB1 recombinant monoclonal antibody, clone SAIC-23E-30 (Cat # RAB03543). Immunofluorescence analysis of paraformaldehyde fixed HeLa cells permeabilized with 0.15% Triton stained with the chimeric r version of RAB03543 at a dilution of 1:100 for 1h followed by Alexa Fluor® 488 secondary antibody at a dilution of 1:1000, showing cytoplasmic staining. The nuclear stain is DAPI (blue). The isotype control was an unknown specificity antibody followed by Alexa Fluor® 488 secondary antibody.

- (A) RAB03543
- (B) DAPI
- (C) Merged channels
- (D) Isotype control

Specification

Product Description	Rabbit recombinant monoclonal antibody raised against human HSPB1.
Antibody Species	Rabbit
Immunogen	Original antibody is raised against peptide "LFDQAFLPR" derived from Heat shock protein beta-1.
Reactivity	Human
Form	Liquid
Isotype	IgG

Recommend Usage	Immunofluorescence Immuno-MRM (multiple reaction monitoring) The optimal working dilution should be determined by the end user.
Storage Buffer	In PBS with 0.02% Proclin 300
Storage Instruction	Store at 4°C for up to 3 months. For longer storage, aliquot and store at -20°C. Aliquot to avoid repeated freezing and thawing.

Applications

- Immunofluorescence

Immunofluorescent staining of HeLa cells with HSPB1 recombinant monoclonal antibody, clone SAIC-23E-30 (Cat # RAB03543). Immunofluorescence analysis of paraformaldehyde fixed HeLa cells permeabilized with 0.15% Triton stained with the chimeric r version of RAB03543 at a dilution of 1:100 for 1h followed by Alexa Fluor® 488 secondary antibody at a dilution of 1:1000, showing cytoplasmic staining. The nuclear stain is DAPI (blue). The isotype control was an unknown specificity antibody followed by Alexa Fluor® 488 secondary antibody.

- (A) RAB03543
- (B) DAPI
- (C) Merged channels
- (D) Isotype control

- Immuno-MRM (multiple reaction monitoring)

Gene Info — HSPB1

Entrez GeneID	3315
Gene Name	HSPB1
Gene Alias	CMT2F, DKFZp586P1322, HMN2B, HS.76067, HSP27, HSP28, Hsp25, SRP27
Gene Description	heat shock 27kDa protein 1
Omim ID	602195 606595 608634
Gene Ontology	Hyperlink
Gene Summary	The protein encoded by this gene is induced by environmental stress and developmental changes . The encoded protein is involved in stress resistance and actin organization and translocates from the cytoplasm to the nucleus upon stress induction. Defects in this gene are a cause of Charcot-Marie-Tooth disease type 2F (CMT2F) and distal hereditary motor neuropathy (dHMN). [provided by RefSeq]
Other Designations	OTTHUMP00000024846 estrogen-regulated 24 kDa protein heat shock 27kD protein 1 heat shock protein beta-1 stress-responsive protein 27

Pathway

- [MAPK signaling pathway](#)
- [VEGF signaling pathway](#)

Disease

- [Adenocarcinoma](#)
- [Carcinoma](#)
- [Charcot-Marie-Tooth Disease](#)
- [Diabetic Nephropathies](#)
- [Genetic Predisposition to Disease](#)
- [Lung Neoplasms](#)
- [Small Cell Lung Carcinoma](#)