

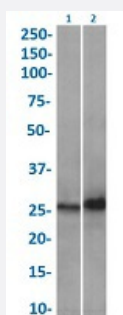
RecomAb™

# HSPB1 recombinant monoclonal antibody, clone SAIC-23B-22

Catalog # RAB03541

Size 200 ug

## Applications



### Western Blot

Western blot analysis of Lane 1: human heart (0.1 ug/mL) and Lane 2: human placenta (0.3 ug/mL) with HSPB1 recombinant monoclonal antibody, clone SAIC-23B-22 (Cat # RAB03541).

Western Blot analysis the tissue lysates (35ug protein in RIPA buffer) were resolved on a SDS PAGE gel and blots probed with the chimeric r version of RAB03541 before detection using an anti-rondary antibody. A primary incubation of 1h was used and protein was detected by chemiluminescence.

### Immunofluorescence

Immunofluorescent staining of Hela cells with HSPB1 recombinant monoclonal antibody, clone SAIC-23B-22 (Cat # RAB03541).

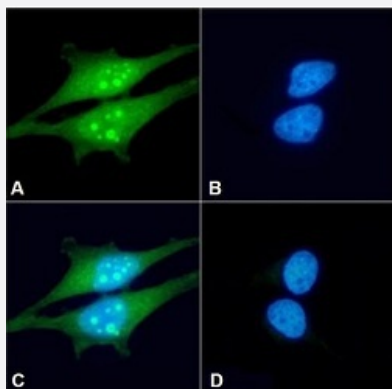
Immunofluorescence analysis of paraformaldehyde fixed Hela cells permeabilized with 0.15% Triton stained with the chimeric r version of RAB03541 at a dilution of 1:100 for 1h followed by Alexa Fluor® 488 secondary antibody at a dilution of 1:1000, showing nucleoli- nuclear and cytoplasmic staining. The nuclear stain is DAPI (blue). The isotype control was an unknown specificity antibody followed by Alexa Fluor® 488 secondary antibody.

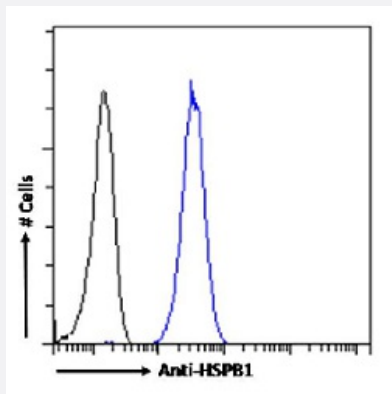
(A) RAB03541

(B) DAPI

(C) Merged channels

(D) Isotype control





## Flow Cytometry

Flow cytometric analysis of Hela cells with HSPB1 recombinant monoclonal antibody, clone SAIC-23B-22 (Cat # RAB03541).

Paraformaldehyde fixed Hela cells permeabilized with 0.5% Triton were stained with anti-unknown specificity antibody (isotype control-black line) or the r version of RAB03541 (blue line) at a dilution of 1:100 for 1h at RT. After washing the bound antibody was detected using a goat anti-r AlexaFluor® 488 antibody at a dilution of 1:1000 and cells analyzed using a FACSCanto flow-cytometer.

## Specification

<b>Product Description</b>	Rabbit recombinant monoclonal antibody raised against human HSPB1.
<b>Antibody Species</b>	Rabbit
<b>Immunogen</b>	Original antibody is raised against peptide "DGVVEITGK" derived from Heat shock protein beta-1.
<b>Reactivity</b>	Human
<b>Form</b>	Liquid
<b>Isotype</b>	IgG
<b>Recommend Usage</b>	Flow Cytometry Immunofluorescence Immuno-MRM (multiple reaction monitoring) Western Blot The optimal working dilution should be determined by the end user.
<b>Storage Buffer</b>	In PBS with 0.02% Proclin 300
<b>Storage Instruction</b>	Store at 4°C for up to 3 months. For longer storage, aliquot and store at -20°C. Aliquot to avoid repeated freezing and thawing.

## Applications

#### Western Blot

Western blot analysis of Lane 1: human heart (0.1 ug/mL) and Lane 2: human placenta (0.3 ug/mL) with HSPB1 recombinant monoclonal antibody, clone SAIC-23B-22 (Cat # RAB03541).

Western Blot analysis the tissue lysates (35ug protein in RIPA buffer) were resolved on a SDS PAGE gel and blots probed with the chimeric r version of RAB03541 before detection using an anti-rondary antibody. A primary incubation of 1h was used and protein was detected by chemiluminescence.

#### Immunofluorescence

Immunofluorescent staining of Hela cells with HSPB1 recombinant monoclonal antibody, clone SAIC-23B-22 (Cat # RAB03541). Immunofluorescence analysis of paraformaldehyde fixed Hela cells permeabilized with 0.15% Triton stained with the chimeric r version of RAB03541 at a dilution of 1:100 for 1h followed by Alexa Fluor® 488 secondary antibody at a dilution of 1:1000, showing nucleoli- nuclear and cytoplasmic staining. The nuclear stain is DAPI (blue). The isotype control was an unknown specificity antibody followed by Alexa Fluor® 488 secondary antibody.

(A) RAB03541

(B) DAPI

(C) Merged channels

(D) Isotype control

#### Flow Cytometry

Flow cytometric analysis of Hela cells with HSPB1 recombinant monoclonal antibody, clone SAIC-23B-22 (Cat # RAB03541). Paraformaldehyde fixed Hela cells permeabilized with 0.5% Triton were stained with were stained with anti-unknown specificity antibody (isotype control-black line) or the r version of RAB03541 (blue line) at a dilution of 1:100 for 1h at RT. After washing the bound antibody was detected using a goat anti-r AlexaFluor® 488 antibody at a dilution of 1:1000 and cells analyzed using a FACSCanto flow-cytometer.

#### Immuno-MRM (multiple reaction monitoring)

## Gene Info — HSPB1

Entrez GeneID [3315](#)

Gene Name HSPB1

Gene Alias CMT2F, DKFZp586P1322, HMN2B, HS.76067, HSP27, HSP28, Hsp25, SRP27

Gene Description heat shock 27kDa protein 1

Omim ID [602195](#) [606595](#) [608634](#)

Gene Ontology [Hyperlink](#)

**Gene Summary** The protein encoded by this gene is induced by environmental stress and developmental changes . The encoded protein is involved in stress resistance and actin organization and translocates from the cytoplasm to the nucleus upon stress induction. Defects in this gene are a cause of Charcot-Marie-Tooth disease type 2F (CMT2F) and distal hereditary motor neuropathy (dHMN). [provide by RefSeq]

**Other Designations**

OTTHUMP00000024846|estrogen-regulated 24 kDa protein|heat shock 27kD protein 1|heat shock protein beta-1|stress-responsive protein 27

**Pathway**

- [MAPK signaling pathway](#)
- [VEGF signaling pathway](#)

**Disease**

- [Adenocarcinoma](#)
- [Carcinoma](#)
- [Charcot-Marie-Tooth Disease](#)
- [Diabetic Nephropathies](#)
- [Genetic Predisposition to Disease](#)
- [Lung Neoplasms](#)
- [Small Cell Lung Carcinoma](#)