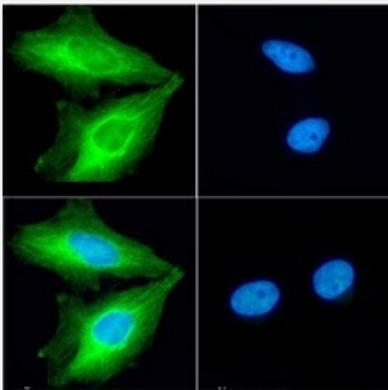


RecomAb™

# FSCN1 recombinant monoclonal antibody, clone SAIC-32C-205

Catalog # RAB03476      Size 200 ug

## Applications



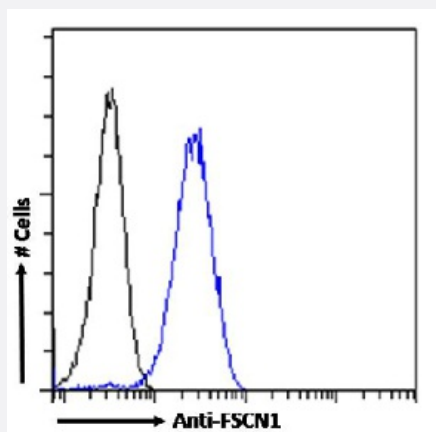
### Immunofluorescence

Immunofluorescent staining of HeLa cells with FSCN1 recombinant monoclonal antibody, clone SAIC-32C-205 (Cat # RAB03476). Immunofluorescence analysis of paraformaldehyde fixed HeLa cells permeabilized with 0.15% Triton stained with the chimeric r version of RAB03476 at a dilution of 1:100 for 1h followed by Alexa Fluor® 488 secondary antibody at a dilution of 1:1000, showing cytoplasmic staining. The nuclear stain is DAPI (blue). The isotype control was stained with an unknown specificity antibody followed by Alexa Fluor® 488 secondary antibody.

- (A) RAB03476
- (B) DAPI
- (C) Merged channels
- (D) Isotype control

### Flow Cytometry

Flow cytometric analysis of HeLa cells with FSCN1 recombinant monoclonal antibody, clone SAIC-32C-205 (Cat # RAB03476). Paraformaldehyde fixed HeLa cells permeabilized with 0.5% Triton were stained with anti-unknown specificity antibody (isotype control-black line) or the r version of RAB03476 (blue line) at a dilution of 1:100 for 1h at RT. After washing the bound antibody was detected using a goat anti-r AlexaFluor® 488 antibody at a dilution of 1:1000 and cells analyzed using a FACSCanto flow-cytometer.



## Specification

### Product Description

Rabbit recombinant monoclonal antibody raised against human FSCN1.

<b>Antibody Species</b>	Rabbit
<b>Immunogen</b>	Original antibody is raised against peptide "TVEEAENIAVTSGVVR" derived from Fascin conjugated to KLH.
<b>Reactivity</b>	Human
<b>Form</b>	Liquid
<b>Isotype</b>	IgG
<b>Recommend Usage</b>	Flow Cytometry Immunofluorescence Immuno-MRM (multiple reaction monitoring) The optimal working dilution should be determined by the end user.
<b>Storage Buffer</b>	In PBS with 0.02% Proclin 300
<b>Storage Instruction</b>	Store at 4°C for up to 3 months. For longer storage, aliquot and store at -20°C. Aliquot to avoid repeated freezing and thawing.

## Applications

### ● Immunofluorescence

Immunofluorescent staining of HeLa cells with FSCN1 recombinant monoclonal antibody, clone SAIC-32C-205 (Cat # RAB03476).

Immunofluorescence analysis of paraformaldehyde fixed HeLa cells permeabilized with 0.15% Triton stained with the chimeric r version of RAB03476 at a dilution of 1:100 for 1h followed by Alexa Fluor® 488 secondary antibody at a dilution of 1:1000, showing cytoplasmic staining. The nuclear stain is DAPI (blue). The isotype control was stained with an unknown specificity antibody followed by Alexa Fluor® 488 secondary antibody.

(A) RAB03476

(B) DAPI

(C) Merged channels

(D) Isotype control

### ● Flow Cytometry

Flow cytometric analysis of HeLa cells with FSCN1 recombinant monoclonal antibody, clone SAIC-32C-205 (Cat # RAB03476). Paraformaldehyde fixed HeLa cells permeabilized with 0.5% Triton were stained with anti-unknown specificity antibody (isotype control-black line) or the r version of RAB03476 (blue line) at a dilution of 1:100 for 1h at RT. After washing the bound antibody was detected using a goat anti-r AlexaFluor® 488 antibody at a dilution of 1:1000 and cells analyzed using a FACSCanto flow-cytometer.

### ● Immuno-MRM (multiple reaction monitoring)

## Gene Info — FSCN1

Entrez GeneID	<a href="#">6624</a>
Gene Name	FSCN1
Gene Alias	FLJ38511, SNL, p55
Gene Description	fascin homolog 1, actin-bundling protein (Strongylocentrotus purpuratus)
Omim ID	<a href="#">602689</a>
Gene Ontology	<a href="#">Hyperlink</a>
Gene Summary	O
Other Designations	Singed, drosophila, homolog-like actin bundling protein fascin 1 singed-like (fascin homolog, sea urchin)

## Disease

- [Cleft Lip](#)
- [Cleft Palate](#)