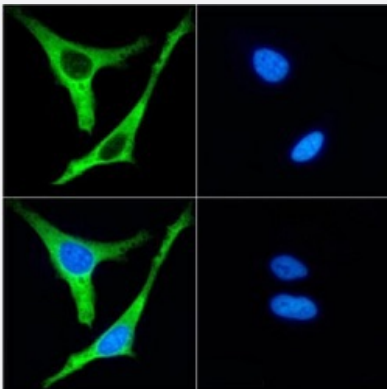


RecomAb™

## EZR recombinant monoclonal antibody, clone SAIC-37C-23

Catalog # RAB03434      Size 200 ug

### Applications

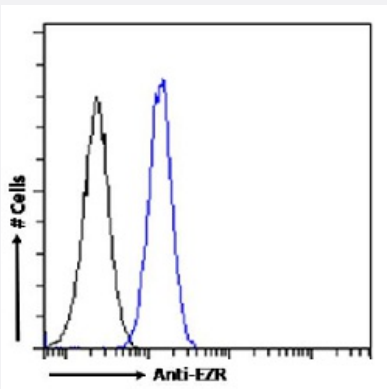


#### Immunofluorescence

Immunofluorescent staining of HeLa cells with EZR recombinant monoclonal antibody, clone SAIC-37C-23 (Cat # RAB03434)

Immunofluorescence analysis of paraformaldehyde fixed HeLa cells stained with the chimeric r version of RAB03434 at a dilution of 1:100 for 1h followed by Alexa Fluor® 488 secondary antibody at a dilution of 1:1000, showing cytoplasmic staining. The nuclear stain is DAPI (blue). The isotype control was stained with an unknown specificity antibody followed by Alexa Fluor® 488 secondary antibody.

- (A) RAB03434
- (B) DAPI
- (C) Merged channels
- (D) Isotype control



#### Flow Cytometry

Flow cytometric analysis of HeLa cells with EZR recombinant monoclonal antibody, clone SAIC-37C-23 (Cat # RAB03434).

Paraformaldehyde fixed HeLa cells permeabilized with 0.5% Triton were stained with anti-unknown specificity antibody (isotype control-black line) or the r version of RAB03434 (blue line) at a dilution of 1:100 for 1h at RT. After washing the bound antibody was detected using a goat anti-r AlexaFluor® 488 antibody at a dilution of 1:1000 and cells analyzed using a FACSCanto flow-cytometer.

### Specification

#### Product Description

Rabbit recombinant monoclonal antibody raised against human EZR.

Antibody Species	Rabbit
Immunogen	Original antibody is raised against the KLH-conjugated peptide "SGYLSSER" derived from Ezrin.
Reactivity	Human
Form	Liquid
Isotype	IgG
Recommend Usage	Flow Cytometry Immunofluorescence Immuno-MRM (multiple reaction monitoring) Western Blot The optimal working dilution should be determined by the end user.
Storage Buffer	In PBS with 0.02% Proclin 300
Storage Instruction	Store at 4°C for up to 3 months. For longer storage, aliquot and store at -20°C. Aliquot to avoid repeated freezing and thawing.

## Applications

- Western Blot

- Immunofluorescence

Immunofluorescent staining of HeLa cells with EZR recombinant monoclonal antibody, clone SAIC-37C-23 (Cat # RAB03434). Immunofluorescence analysis of paraformaldehyde fixed HeLa cells stained with the chimeric r version of RAB03434 at a dilution of 1:100 for 1h followed by Alexa Fluor® 488 secondary antibody at a dilution of 1:1000, showing cytoplasmic staining. The nuclear stain is DAPI (blue). The isotype control was stained with an unknown specificity antibody followed by Alexa Fluor® 488 secondary antibody.

(A) RAB03434

(B) DAPI

(C) Merged channels

(D) Isotype control

- Flow Cytometry

Flow cytometric analysis of HeLa cells with EZR recombinant monoclonal antibody, clone SAIC-37C-23 (Cat # RAB03434). Paraformaldehyde fixed HeLa cells permeabilized with 0.5% Triton were stained with anti-unknown specificity antibody (isotype control-black line) or the r version of RAB03434 (blue line) at a dilution of 1:100 for 1h at RT. After washing the bound antibody was detected using a goat anti-r AlexaFluor® 488 antibody at a dilution of 1:1000 and cells analyzed using a FACSCanto flow-cytometer.

- Immuno-MRM (multiple reaction monitoring)

## Gene Info — EZR

**Entrez GeneID** [7430](#)

**Gene Name** EZR

**Gene Alias** CVIL, CVL, DKFZp762H157, FLJ26216, MGC1584, VIL2

**Gene Description** ezrin

**Omim ID** [123900](#)

**Gene Ontology** [Hyperlink](#)

**Gene Summary** The cytoplasmic peripheral membrane protein encoded by this gene functions as a protein-tyrosine kinase substrate in microvilli. As a member of the ERM protein family, this protein serves as an intermediate between the plasma membrane and the actin cytoskeleton. This protein plays a key role in cell surface structure adhesion, migration and organization, and it has been implicated in various human cancers. A pseudogene located on chromosome 3 has been identified for this gene. Alternatively spliced variants have also been described for this gene. [provided by RefSeq]

**Other Designations** OTTHUMP00000017506|OTTHUMP00000017507|cytovillin 2|villin 2 (ezrin)

## Pathway

- [Leukocyte transendothelial migration](#)
- [Pathogenic Escherichia coli infection - EHEC](#)
- [Regulation of actin cytoskeleton](#)

## Disease

- [Asthma](#)
- [Cardiovascular Diseases](#)
- [Diabetes Mellitus](#)
- [Edema](#)
- [Genetic Predisposition to Disease](#)
- [Hypersensitivity](#)

- [Lung Neoplasms](#)
- [Ovarian Neoplasms](#)
- [Pulmonary Disease](#)
- [Tobacco Use Disorder](#)
- [Urinary Bladder Neoplasms](#)
- [Werner syndrome](#)