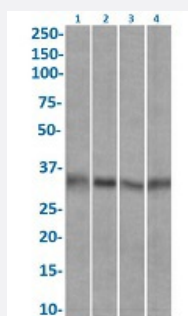


RecomAb™

EPCAM recombinant monoclonal antibody, clone KS1/4

Catalog # RAB03432 Size 200 ug

Applications



Western Blot

Western blot analysis of Lane 1: A431, Lane 2: Caco-2, Lane 3: MCF-7 and Lane 4: HepG2 with EPCAM recombinant monoclonal antibody, clone KS1/4 (Cat # RAB03432).

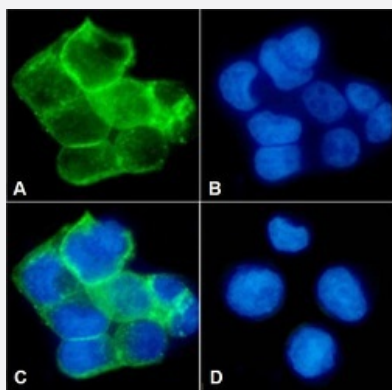
Western Blot analysis the lysates (35 ug protein in RIPA buffer) were resolved on a SDS PAGE gel and blots were probed with the chimeric rsion of with RAB03432 at 2 ug/mL before detection using an anti-rondary antibody. A primary incubation of 1h was used and protein was detected by chemiluminescence.

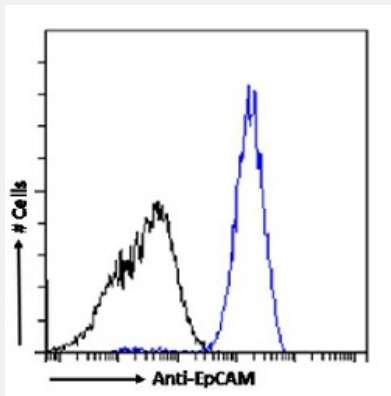
Immunofluorescence

Immunofluorescent staining of Caco-2 cells with EPCAM recombinant monoclonal antibody, clone KS1/4 (Cat # RAB03432).

Immunofluorescence analysis of paraformaldehyde fixed Caco-2 cells stained with the chimeric r version of RAB03432 at a dilution of 1:100 for 1h followed by Alexa Fluor® 488 secondary antibody at a dilution of 1:1000, showing membrane staining. The nuclear stain is DAPI (blue). The isotype control was an unknown specificity antibody followed by Alexa Fluor® 488 secondary antibody.

- (A) RAB03432
- (B) DAPI
- (C) Merged channels
- (D) Isotype control





Flow Cytometry

Flow cytometric analysis of Caco-2 cells with EPCAM recombinant monoclonal antibody, clone KS1/4 (Cat # RAB03432).

Paraformaldehyde fixed Caco-2 cells were stained with anti-unknown specificity antibody (isotype control-black line) or the r version of RAB03432 (blue line) at a dilution of 1:100 for 1h at RT. After washing the bound antibody was detected using a goat anti-r AlexaFluor® 488 antibody at a dilution of 1:1000 and cells analyzed using a FACSCanto flow-cytometer.

Specification

Product Description	Rabbit recombinant monoclonal antibody raised against human EPCAM.
Antibody Species	Rabbit
Immunogen	Original antibody is raised against human adenocarcinoma of the lung cell line UCLA P3.
Reactivity	Human
Form	Liquid
Isotype	IgG
Recommend Usage	ELISA Flow Cytometry Immunofluorescence Western Blot The optimal working dilution should be determined by the end user.
Storage Buffer	In PBS with 0.02% Proclin 300
Storage Instruction	Store at 4°C for up to 3 months. For longer storage, aliquot and store at -20°C. Aliquot to avoid repeated freezing and thawing.

Applications

Western Blot

Western blot analysis of Lane 1: A431, Lane 2: Caco-2, Lane 3: MCF-7 and Lane 4: HepG2 with EPCAM recombinant monoclonal antibody, clone KS1/4 (Cat # RAB03432).

Western Blot analysis the lysates (35 ug protein in RIPA buffer) were resolved on a SDS PAGE gel and blots were probed with the chimeric rsion of with RAB03432 at 2 ug/mL before detection using an anti-rondary antibody. A primary incubation of 1h was used and protein was detected by chemiluminescence.

Immunofluorescence

Immunofluorescent staining of Caco-2 cells with EPCAM recombinant monoclonal antibody, clone KS1/4 (Cat # RAB03432). Immunofluorescence analysis of paraformaldehyde fixed Caco-2 cells stained with the chimeric r version of RAB03432 at a dilution of 1:100 for 1h followed by Alexa Fluor® 488 secondary antibody at a dilution of 1:1000, showing membrane staining. The nuclear stain is DAPI (blue). The isotype control was an unknown specificity antibody followed by Alexa Fluor® 488 secondary antibody.

(A) RAB03432

(B) DAPI

(C) Merged channels

(D) Isotype control

Enzyme-linked Immunoabsorbent Assay

Flow Cytometry

Flow cytometric analysis of Caco-2 cells with EPCAM recombinant monoclonal antibody, clone KS1/4 (Cat # RAB03432).

Paraformaldehyde fixed Caco-2 cells were stained with anti-unknown specificity antibody (isotype control-black line) or the r version of RAB03432 (blue line) at a dilution of 1:100 for 1h at RT. After washing the bound antibody was detected using a goat anti-r AlexaFluor® 488 antibody at a dilution of 1:1000 and cells analyzed using a FACSCanto flow-cytometer.

Gene Info — EPCAM

Entrez GeneID [4072](#)

Gene Name EPCAM

Gene Alias 17-1A, 323/A3, CD326, CO-17A, CO17-1A, EGP, EGP-2, EGP34, EGP40, ESA, Ep-CAM, GA7 33-2, HEA125, KS1/4, KSA, M4S1, MH99, MIC18, MK-1, MOC31, TACST-1, TACSTD1, TROP 1, hEGP-2

Gene Description epithelial cell adhesion molecule

Omim ID [185535](#)

Gene Ontology [Hyperlink](#)

Gene Summary This gene encodes a carcinoma-associated antigen and is a member of a family that includes at least two type I membrane proteins. This antigen is expressed on most normal epithelial cells and gastrointestinal carcinomas and functions as a homotypic calcium-independent cell adhesion molecule. The antigen is being used as a target for immunotherapy treatment of human carcinomas. Mutations in this gene result in congenital tufting enteropathy. [provided by RefSeq]

Other Designations

adenocarcinoma-associated antigen|carcinoma-associated antigen GA733-2|human epithelial glycoprotein-2|membrane component, chromosome 4, surface marker (35kD glycoprotein)|tumor-associated calcium signal transducer 1

Disease

- [Genetic Predisposition to Disease](#)
- [Ovarian Neoplasms](#)