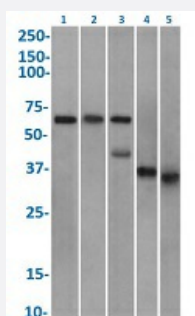


RecomAb™

CLU recombinant monoclonal antibody, clone SAIC-43B-8

Catalog # RAB03369 Size 200 ug

Applications



Western Blot

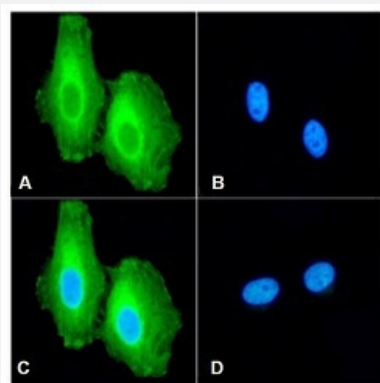
Western blot analysis of Lane 1: Hela (0.03 ug/mL) , Lane 2: MCF-7 (0.01 ug/mL), Lane 3: human brain cerebellum (0.03 ug/mL), Lane 4: human plasma (0.03 ug/mL) and Lane 5: human testes (0.03 ug/mL) lysates with CLU recombinant monoclonal antibody, clone SAIC-43B-8 (Cat # RAB03369). Tissue lysates (35ug protein in RIPA buffer) were resolved on a SDS PAGE gel and blots were probed with the chimeric rsion of SAIC-43B-8 before detection using an anti-rondary antibody. A primary incubation of 1h was used and protein was detected by chemiluminescence.

Immunofluorescence

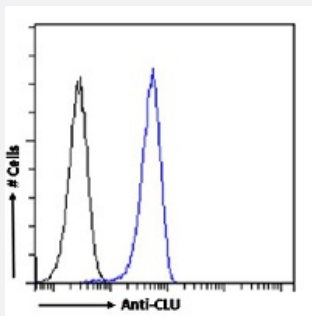
Immunofluorescent staining of Hela cells with CLU recombinant monoclonal antibody, clone SAIC-43B-8 (Cat # RAB03369)

Immunofluorescence analysis of paraformaldehyde fixed Hela cells, permeabilized with 0.15% Triton stained with the chimeric r version of RAB03369 at a dilution of 1:100 for 1h followed by Alexa Fluor® 488 secondary antibody at a dilution of 1:1000, showing cytoplasmic staining. The nuclear stain is DAPI (blue). The isotype control was stained with an unknown specificity antibody followed by Alexa Fluor® 488 secondary antibody.

- (A) RAB03369
- (B) DAPI
- (C) Merged channels
- (D) Isotype control



Flow Cytometry



Flow cytometric analysis of Hela cells with CLU recombinant monoclonal antibody, clone SAIC-43B-8 (Cat # RAB03369).

Paraformaldehyde fixed Hela cells permeabilized with 0.5% Triton were stained with anti-unknown specificity antibody (isotype control-black line) or the r version of RAB03369 (blue line) at a dilution of 1:100 for 1h at RT. After washing the bound antibody was detected using a goat anti r AlexaFluor® 488 antibody at a dilution of 1:1000 and cells analyzed using a FACSCanto flow-cytometer.

Specification

Product Description	Rabbit recombinant monoclonal antibody raised against human CLU.
Antibody Species	Rabbit
Immunogen	Original antibody is raised against peptide "ASSIIDELFQDR" derived from clusterin conjugated to K LH.
Reactivity	Human
Form	Liquid
Conjugation	Unconjugated
Concentration	batch dependent
Isotype	IgG, kappa
Recommend Usage	ELISA Flow Cytometry Immunofluorescence immuno-MRM Western Blot The optimal working dilution should be determined by the end user.
Storage Buffer	In PBS with 0.02% Proclin 300
Storage Instruction	Store at 4°C for up to 3 months. For longer storage, aliquot and store at -20°C. Aliquot to avoid repeated freezing and thawing.

Applications

● Western Blot

Western blot analysis of Lane 1: Hela (0.03 ug/mL) , Lane 2: MCF-7 (0.01 ug/mL), Lane 3: human brain cerebellum (0.03 ug/mL), Lane 4: human plasma (0.03 ug/mL) and Lane 5: human testes (0.03 ug/mL) lysates with CLU recombinant monoclonal antibody, clone SAIC-43B-8 (Cat # RAB03369). Tissue lysates (35ug protein in RIPA buffer) were resolved on a SDS PAGE gel and blots were probed with the chimeric rsion of SAIC-43B-8 before detection using an anti-rondary antibody. A primary incubation of 1h was used and protein was detected by chemiluminescence.

● Immunofluorescence

Immunofluorescent staining of Hela cells with CLU recombinant monoclonal antibody, clone SAIC-43B-8 (Cat # RAB03369) Immunofluorescence analysis of paraformaldehyde fixed Hela cells, permeabilized with 0.15% Triton stained with the chimeric r version of RAB03369 at a dilution of 1:100 for 1h followed by Alexa Fluor® 488 secondary antibody at a dilution of 1:1000, showing cytoplasmic staining. The nuclear stain is DAPI (blue). The isotype control was stained with an unknown specificity antibody followed by Alexa Fluor® 488 secondary antibody.

(A) RAB03369

(B) DAPI

(C) Merged channels

(D) Isotype control

● Enzyme-linked Immunoabsorbent Assay

● Flow Cytometry

Flow cytometric analysis of Hela cells with CLU recombinant monoclonal antibody, clone SAIC-43B-8 (Cat # RAB03369). Paraformaldehyde fixed Hela cells permeabilized with 0.5% Triton were stained with anti-unknown specificity antibody (isotype control-black line) or the r version of RAB03369 (blue line) at a dilution of 1:100 for 1h at RT. After washing the bound antibody was detected using a goat anti r AlexaFluor® 488 antibody at a dilution of 1:1000 and cells analyzed using a FACSCanto flow-cytometer.

● Immuno-MRM (multiple reaction monitoring)

Gene Info — CLU

Entrez GeneID	1191
Gene Name	CLU
Gene Alias	AAG4, APOJ, CLI, KUB1, MGC24903, SGP-2, SGP2, SP-40, TRPM-2, TRPM2
Gene Description	clusterin
Omim ID	185430
Gene Ontology	Hyperlink

Gene Summary

SP-40

Other Designations

OTTHUMP00000128311|aging-associated protein 4|apolipoprotein J|clusterin (complement lysis inhibitor, SP-40,40, sulfated glycoprotein 2, testosterone-repressed prostate message 2, apolipo protein J)|complement lysis inhibitor|complement-associated protein

Disease

- [Alzheimer disease](#)
- [Atherosclerosis](#)
- [Cardiovascular Diseases](#)
- [Coronary Artery Disease](#)
- [Diabetes Complications](#)
- [Diabetes Mellitus](#)
- [Exfoliation Syndrome](#)
- [Genetic Predisposition to Disease](#)
- [Glaucoma](#)
- [Hypertension](#)
- [Lymphoma](#)
- [Macular Degeneration](#)
- [Metabolic Syndrome X](#)
- [Neoplasms](#)
- [Osteoporosis](#)
- [Panic Disorder](#)
- [Pre-Eclampsia](#)
- [Pregnancy Complications](#)
- [Schizophrenia](#)