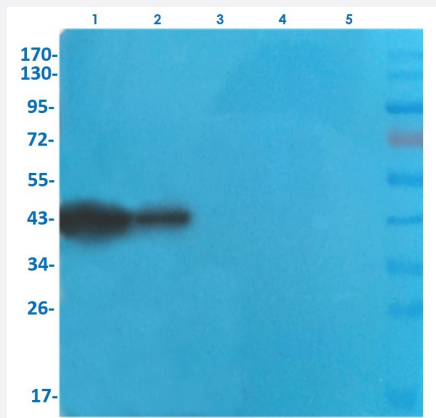


RecomAb™

# SEPTIN5 recombinant monoclonal antibody, clone SP18

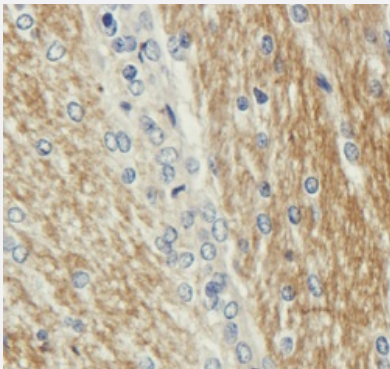
Catalog # RAB03365      Size 200 ug

## Applications



### Western Blot

Western blot analysis of Lane 1: rat brain, Lane 2: mouse spinal cord, Lane 3: rat testis, Lane 4: human lung cancer and Lane 5: human breast cancer with SEPTIN5 recombinant monoclonal antibody (2 ug/mL), clone SP18 (Cat # RAB03365).



### Immunohistochemistry

Immunohistochemical staining (Formalin fixed rin slices were were stained with 3 ug/mL) of RIN with SEPTIN5 recombinant monoclonal antibody, clone SP18 (Cat # RAB02365).

## Specification

<b>Product Description</b>	Mouse recombinant monoclonal antibody raised against human SEPTIN5.
<b>Antibody Species</b>	Mouse
<b>Immunogen</b>	Original antibody is raised against immunoprecipitate from human brain.
<b>Reactivity</b>	Human, Rabbit, Rat

Form	Liquid
Conjugation	Unconjugated
Concentration	batch dependent
Isotype	IgG1, kappa
Recommend Usage	ELISA Immunohistochemistry Western Blot The optimal working dilution should be determined by the end user.
Storage Buffer	In PBS with 0.02% Proclin 300
Storage Instruction	Store at 4°C for up to 3 months. For longer storage, aliquot and store at -20°C. Aliquot to avoid repeated freezing and thawing.

## Applications

- Western Blot

Western blot analysis of Lane 1: rat brain, Lane 2: mouse spinal cord, Lane 3: rat testis, Lane 4: human lung cancer and Lane 5: human breast cancer with SEPTIN5 recombinant monoclonal antibody (2 ug/mL), clone SP18 (Cat # RAB03365).

- Immunohistochemistry

Immunohistochemical staining (Formalin fixed rin slices were were stained with 3 ug/mL) of RIN with SEPTIN5 recombinant monoclonal antibody, clone SP18 (Cat # RAB02365).

- Enzyme-linked Immunoabsorbent Assay

## Gene Info — SEPT5

Entrez GeneID	<a href="#">5413</a>
Gene Name	SEPT5
Gene Alias	CDCREL, CDCREL-1, CDCREL1, H5, PNUTL1
Gene Description	sepin 5
Omim ID	<a href="#">602724</a>
Gene Ontology	<a href="#">Hyperlink</a>

**Gene Summary**

This gene is a member of the septin gene family of nucleotide binding proteins, originally described in yeast as cell division cycle regulatory proteins. Septins are highly conserved in yeast, *Drosophila*, and mouse and appear to regulate cytoskeletal organization. Disruption of septin function disturbs cytokinesis and results in large multinucleate or polyploid cells. This gene is mapped to 22q11, the region frequently deleted in DiGeorge and velocardiofacial syndromes. A translocation involving the MLL gene and this gene has also been reported in patients with acute myeloid leukemia. Two transcripts of this gene, a major one of 2.2 kb and a minor one of 3.5 kb, have been observed. The 2.2 kb form results from the utilization of a non-consensus polyA signal (AACAAAT). In the absence of polyadenylation from this imperfect site, the consensus polyA signal of the downstream neighboring gene (GP1BB; platelet glycoprotein Ib) is used, resulting in the 3.5 kb transcript. An alternatively spliced transcript variant with a different 5' end has also been identified, but its full-length nature has not been completely determined. [provided by RefSeq]

**Other Designations**

cell division control related protein 1|peanut-like 1|platelet glycoprotein Ib beta chain