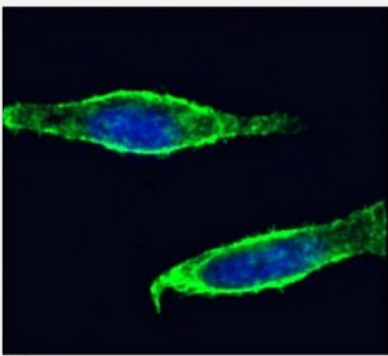


RecomAb™

SLC3A2 recombinant monoclonal antibody, clone CP1-5

Catalog # RAB03360 Size 200 ug

Applications



Immunofluorescence

Immunofluorescent staining of HeLa cells with SLC3A2 recombinant monoclonal antibody, clone CP1-5 (Cat # RAB03360).

Immunofluorescence analysis of paraformaldehyde HeLa cells fixed on Shi-fix™ coverslips, permeabilized with 0.15% Triton stained with the chimeric mouse IgG1 version of RAB03360 at 10 ug/mL for 1h followed by Alexa Fluor® 488 secondary antibody (2 ug/mL), showing membrane staining. The nuclear stain is DAPI (blue). The isotype control was stained with an unknown specificity antibody followed by Alexa Fluor® 488 secondary antibody.

Specification

Product Description	Mouse recombinant monoclonal antibody raised against human SLC3A2.
Antibody Species	Mouse
Immunogen	Original antibody is raised against epitope peptide (LLHGDFHAFSAG-GGGCCD) linked to KLH.
Reactivity	Human
Form	Liquid
Conjugation	Unconjugated
Concentration	batch dependent
Isotype	IgG1, kappa
Recommend Usage	ELISA Immunofluorescence The optimal working dilution should be determined by the end user.

Storage Buffer

In PBS with 0.02% Proclin 300

Storage Instruction

Store at 4°C for up to 3 months. For longer storage, aliquot and store at -20°C.
Aliquot to avoid repeated freezing and thawing.

Applications

- Immunofluorescence

Immunofluorescent staining of Hela cells with SLC3A2 recombinant monoclonal antibody, clone CP1-5 (Cat # RAB03360). Immunofluorescence analysis of paraformaldehyde Hela cells fixed on Shi-fix™ coverslips, permeabilized with 0.15% Triton stained with the chimeric mouse IgG1 version of RAB03360 at 10 ug/mL for 1h followed by Alexa Fluor® 488 secondary antibody (2 ug/mL), showing membrane staining. The nuclear stain is DAPI (blue). The isotype control was stained with an unknown specificity antibody followed by Alexa Fluor® 488 secondary antibody.

- Enzyme-linked Immunoabsorbent Assay

Gene Info — SLC3A2

Entrez GeneID[6520](#)**Gene Name**

SLC3A2

Gene Alias

4F2, 4F2HC, 4T2HC, CD98, CD98HC, MDU1, NACAE

Gene Description

solute carrier family 3 (activators of dibasic and neutral amino acid transport), member 2

Omim ID[158070](#)**Gene Ontology**[Hyperlink](#)**Gene Summary**

This gene is a member of the solute carrier family and encodes a cell surface, transmembrane protein with an alpha amylase domain. The protein exists as the heavy chain of a heterodimer, covalently bound through di-sulfide bonds to one of several possible light chains. It associates with integrins and mediates integrin-dependent signaling related to normal cell growth and tumorigenesis. Alternate transcriptional splice variants, encoding different isoforms, have been characterized. [provided by RefSeq]

Other Designations

4F2 cell-surface antigen heavy chain|4F2 heavy chain|CD98 heavy chain|antigen defined by monoclonal antibody 4F2, heavy chain|antigen identified by monoclonal antibodies 4F2, TRA1.10, TROP4, and T43|heavy chain|lymphocyte activation antigen 4F2 large subu

Disease

- [Cardiovascular Diseases](#)
- [Diabetes Mellitus](#)
- [Edema](#)
- [Lymphoma](#)
- [Multiple Myeloma](#)