

RecomAb™

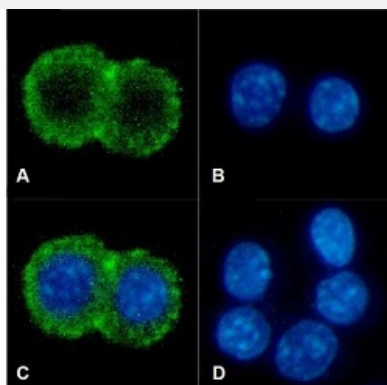
Cd86 recombinant monoclonal antibody, clone PO.3

Catalog # RAB03348

Size 200 ug

Applications

Immunofluorescence



Immunofluorescent staining of Raw 264.7 cells with Cd86 recombinant monoclonal antibody, clone PO.3 (Cat # RAB03348).

Immunofluorescence analysis of Paraformaldehyde Raw 264.7 cells fixed on Shi-fix™ coverslips stained with the chimeric r version of RAB03348 at 10 ug/mL for 1h followed by Alexa Fluor® 488 secondary antibody (2 ug/mL), showing membrane staining. The nuclear stain is DAPI (blue). The isotype control was stained with an unknown specificity antibody followed by Alexa Fluor®488 secondary antibody.

(A) RAB03348

(B) DAPI

(C) Merged channels

(D) Isotype control

Specification

Product Description	Rabbit recombinant monoclonal antibody raised against mouse Cd86.
Antibody Species	Rabbit
Immunogen	Original antibody is raised against a mouse B cell line, BCL1 and fusing immune splenocytes with P 3U1 myeloma cells.
Reactivity	Mouse
Form	Liquid
Conjugation	Unconjugated
Concentration	batch dependent

Isotype	IgG, kappa
Recommend Usage	Blocking Flow Cytometry Functional Study Immunofluorescence Immunohistochemistry Western Blot The optimal working dilution should be determined by the end user.
Storage Buffer	In PBS with 0.02% Proclin 300
Storage Instruction	Store at 4°C for up to 3 months. For longer storage, aliquot and store at -20°C. Aliquot to avoid repeated freezing and thawing.

Applications

- Western Blot
- Immunohistochemistry
- Immunofluorescence

Immunofluorescent staining of Raw 264.7 cells with Cd86 recombinant monoclonal antibody, clone PO.3 (Cat # RAB03348). Immunofluorescence analysis of Paraformaldehyde Raw 264.7 cells fixed on Shi-fix™ coverslips stained with the chimeric r version of RAB03348 at 10 ug/mL for 1h followed by Alexa Fluor® 488 secondary antibody (2 ug/mL), showing membrane staining. The nuclear stain is DAPI (blue). The isotype control was stained with an unknown specificity antibody followed by Alexa Fluor®488 secondary antibody.

(A) RAB03348
(B) DAPI
(C) Merged channels
(D) Isotype control

- Functional Study
- Blocking
- Flow Cytometry

Gene Info — Cd86

Entrez GeneID	12524
Gene Name	Cd86

Gene Alias	B7, B7-2, B7.2, B70, CLS1, Cd28l2, ETC-1, Ly-58, Ly58, MB7, MB7-2, TS/A-2
Gene Description	CD86 antigen
Gene Ontology	Hyperlink
Other Designations	OTTMUSP00000015940 T-lymphocyte activation antigen CD86 activation B7-2 antigen early T cell costimulatory molecule-1