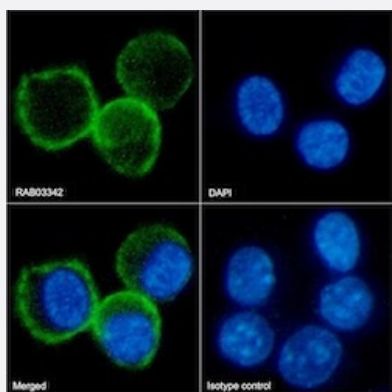


RecomAb™

Cd80 recombinant monoclonal antibody, clone RM80

Catalog # RAB03342 Size 200 ug

Applications



Immunofluorescence

Immunofluorescent staining of RAW264.7 cells with Cd80 recombinant monoclonal antibody, clone RM80 (Cat # RAB03342).

RAW264.7 cells on Shi-fix™ coverslips stained with the chimeric r version of RAB03342 at 10 ug/ml for 1h followed by Alexa Fluor® 488 secondary antibody (2 ug/ml)- showing membrane staining. The nuclear stain is DAPI (blue). Panels show from left-right- top-bottom RAB03342- DAPI- merged channels and an isotype control. The isotype control was an unknown specificity antibody (3.0) followed by staining with Alexa Fluor® 488 secondary antibody.

Specification

Product Description	Rabbit recombinant monoclonal antibody raised against mouse Cd80.
Antibody Species	Rabbit
Immunogen	Original antibody is raised against a mouse B cell line, BCL1 and fusing immune splenocytes with P 3U1 myeloma cells.
Reactivity	Mouse
Form	Liquid
Isotype	IgG kappa

Recommend Usage

Blocking
Flow Cytometry
Functional Study
Immunofluorescence
Immunohistochemistry
Western Blot
The optimal working dilution should be determined by the end user.

Storage Buffer

In PBS (0.02% Proclin 300)

Storage Instruction

Store at 4°C for 3 months. For long term storage store at -20°C.
Aliquot to avoid repeated freezing and thawing.

Applications

- Western Blot
- Immunohistochemistry
- Immunofluorescence

Immunofluorescent staining of RAW264.7 cells with Cd80 recombinant monoclonal antibody, clone RM80 (Cat # RAB03342). RAW264.7 cells on Shi-fix™ coverslips stained with the chimeric r version of RAB03342 at 10 ug/ml for 1h followed by Alexa Fluor® 488 secondary antibody (2 ug/ml)- showing membrane staining. The nuclear stain is DAPI (blue). Panels show from left-right- top-bottom RAB03342- DAPI- merged channels and an isotype control. The isotype control was an unknown specificity antibody (3.0) followed by staining with Alexa Fluor® 488 secondary antibody.

- Functional Study
- Blocking
- Flow Cytometry

Gene Info — Cd80

Entrez GeneID

[12519](#)

Gene Name

Cd80

Gene Alias

B7-1, B7.1, Cd28l, Ly-53, Ly53, MIC17, TS/A-1

Gene Description

CD80 antigen

Gene Ontology

[Hyperlink](#)

Other DesignationsB7 protein
