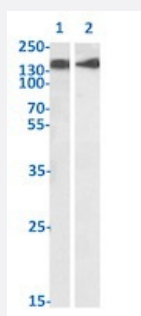


RecomAb™

# NCAM1 recombinant monoclonal antibody, clone NCAM12.19

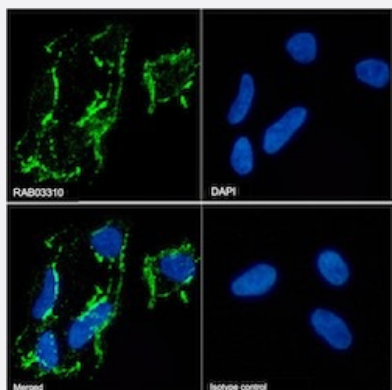
Catalog # RAB03310      Size 200 ug

## Applications



### Western Blot

Western blot analysis of Lane 1: human brain cerebellum lysate and Lane 2: human cerebral cortex lysate with NCAM1 recombinant monoclonal antibody, clone NCAM12.19 (Cat # RAB03310).



### Immunofluorescence

Immunofluorescence staining of Kelly cells with NCAM1 recombinant monoclonal antibody, clone NCAM12.19 (Cat # RAB03310).

Kelly cells stained with the chimeric mouse IgG version of RAB03310 at 10 ug/ml followed by Alexa Fluor® 488 secondary antibody (2 ug/ml)- showing membrane staining. The nuclear stain is DAPI (blue). Panels show from left-right- top-bottom .RAB03310- DAPI- merged channels and an isotype control. The isotype control was stained with anti-unknown antibody (.1) followed by Alexa Fluor® 488 secondary antibody.

## Specification

Product Description	Mouse recombinant monoclonal antibody raised against human NCAM1.
Antibody Species	Mouse
Immunogen	Original antibody is raised against recombinant protein corresponding to human NCAM.
Reactivity	Human
Form	Liquid

Isotype	IgG1 kappa
Recommend Usage	ELISA Immunofluorescence Western Blot The optimal working dilution should be determined by the end user.
Storage Buffer	In PBS (0.02% Proclin 300)
Storage Instruction	Store at 4°C for 3 months. For long term storage store at -20°C. Aliquot to avoid repeated freezing and thawing.

## Applications

- Western Blot

Western blot analysis of Lane 1: human brain cerebellum lysate and Lane 2: human cerebral cortex lysate with NCAM1 recombinant monoclonal antibody, clone NCAM12.19 (Cat # RAB03310).

- Immunofluorescence

Immunofluorescence staining of Kelly cells with NCAM1 recombinant monoclonal antibody, clone NCAM12.19 (Cat # RAB03310).

Kelly cells stained with the chimeric mouse IgG version of RAB03310 at 10 ug/ml followed by Alexa Fluor® 488 secondary antibody (2 ug/ml)- showing membrane staining. The nuclear stain is DAPI (blue). Panels show from left-right- top-bottom .RAB03310- DAPI- merged channels and an isotype control. The isotype control was stained with anti-unknown antibody (.1) followed by Alexa Fluor® 488 secondary antibody.

- Enzyme-linked Immunoabsorbent Assay

## Gene Info — NCAM1

Entrez GeneID	<a href="#">4684</a>
Gene Name	NCAM1
Gene Alias	CD56, MSK39, NCAM
Gene Description	neural cell adhesion molecule 1
Omim ID	<a href="#">116930</a>
Gene Ontology	<a href="#">Hyperlink</a>
Gene Summary	NCAM
Other Designations	antigen recognized by monoclonal antibody 5.1H11 neural cell adhesion molecule, NCAM

## Pathway

- [Cell adhesion molecules \(CAMs\)](#)
- [Prion diseases](#)

## Disease

- [Alcoholism](#)
- [Bipolar Disorder](#)
- [Cardiovascular Diseases](#)
- [Cocaine-Related Disorders](#)
- [Diabetes Mellitus](#)
- [Edema](#)
- [Genetic Predisposition to Disease](#)
- [Inhibition \(Psychology\)](#)
- [Mental Disorders](#)
- [Opioid-Related Disorders](#)
- [Schizophrenia](#)
- [Substance-Related Disorders](#)
- [Tobacco Use Disorder](#)