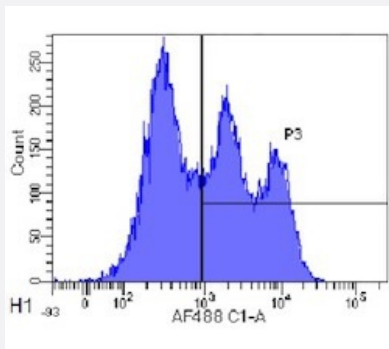


RecomAb™

# CD52 recombinant monoclonal antibody, clone Campath-1H

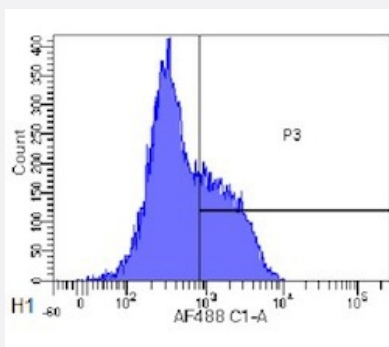
Catalog # RAB03300      Size 200 ug

## Applications



### Flow Cytometry

Flow cytometric analysis of cynomolgus monkey lymphocytes with CD52 recombinant monoclonal antibody, clone Campath-1H (Cat # RAB03300). Cynomolgus monkey lymphocytes were stained with an isotype control (3.0- panel A) or the rmeric version of RAB03300 ( panel B) at a concentration of 1 ug/ml for 30 mins at RT. After washing- bound antibody was detected using a AF488 conjugated donkey anti-ribody ( and cells analysed on a FACSCanto flow-cytometer.



### Flow Cytometry

Flow cytometric analysis of rhesus monkey lymphocytes with CD52 recombinant monoclonal antibody, clone Campath-1H (Cat # RAB03300). Rhesus monkey lymphocytes were stained with an isotype control (3.0- panel A) or the rmeric version of RAB03300 (panel B) at a concentration of 1 ug/ml for 30 mins at RT. After washing- bound antibody was detected using a AF488 conjugated donkey anti-ribody ( and cells analysed on a FACSCanto flow-cytometer.

## Specification

<b>Product Description</b>	Rabbit recombinant monoclonal antibody raised against human CD52.
<b>Antibody Species</b>	Rabbit
<b>Immunogen</b>	Original antibody is raised against human lymphocytes.
<b>Reactivity</b>	Crab-eating macaque, Human, Macaque
<b>Form</b>	Liquid

<b>Isotype</b>	IgG kappa
<b>Recommend Usage</b>	Cytotoxicity Assay ELISA Flow Cytometry Immunohistochemistry <i>In vivo</i> Imaging Western Blot The optimal working dilution should be determined by the end user.
<b>Storage Buffer</b>	In PBS (0.02% Proclin 300)
<b>Storage Instruction</b>	Store at 4°C for 3 months. For long term storage store at -20°C. Aliquot to avoid repeated freezing and thawing.

## Applications

- Western Blot
- Immunohistochemistry
- Enzyme-linked Immunoabsorbent Assay
- Complement-Dependent Cytotoxicity Assays
- Flow Cytometry

Flow cytometric analysis of cynomolgus monkey lymphocytes with CD52 recombinant monoclonal antibody, clone Campath-1H (Cat # RAB03300).

Cynomolgus monkey lymphocytes were stained with an isotype control (3.0- panel A) or the rmeric version of RAB03300 ( panel B) at a concentration of 1 ug/ml for 30 mins at RT. After washing- bound antibody was detected using a AF488 conjugated donkey anti-ribody ( and cells analysed on a FACSCanto flow-cytometer.

- Flow Cytometry

Flow cytometric analysis of rhesus monkey lymphocytes with CD52 recombinant monoclonal antibody, clone Campath-1H (Cat # RAB03300).

Rhesus monkey lymphocytes were stained with an isotype control (3.0- panel A) or the rmeric version of RAB03300 (panel B) at a concentration of 1 ug/ml for 30 mins at RT. After washing- bound antibody was detected using a AF488 conjugated donkey anti-ribody ( and cells analysed on a FACSCanto flow-cytometer.

- *In vivo* Imaging

## Gene Info — CD52

Entrez GeneID	<a href="#">1043</a>
Gene Name	CD52
Gene Alias	CDW52
Gene Description	CD52 molecule
Omim ID	<a href="#">114280</a>
Gene Ontology	<a href="#">Hyperlink</a>
Other Designations	CD52 antigen CD52 antigen (CAMPATH-1 antigen) CDW52 antigen (CAMPATH-1 antigen) OTT HUMP00000003570