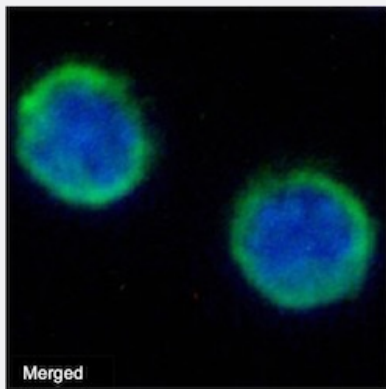


RecomAb™

Ptpcr recombinant monoclonal antibody, clone RA3-6B2

Catalog # RAB03287 Size 200 ug

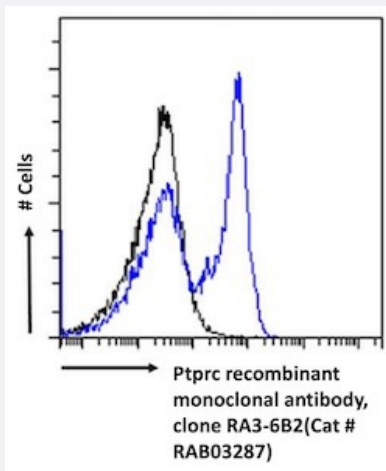
Applications



Immunofluorescence

Immunofluorescent staining of mouse splenocytes with Ptpcr recombinant monoclonal antibody, clone RA3-6B2 (Cat # RAB03287).

Mouse splenocytes immobilized on Shi-fix™ cover-slips and stained with the chimeric r version of RAB03287 at 10 ug/ml followed by Alexa Fluor® 488 secondary antibody (2 ug/ml)- showing membrane staining. The nuclear stain is DAPI (blue). The isotype control was stained with anti-Fluorescein antibody (3.0) followed by Alexa Fluor® 488 secondary antibody.



Flow Cytometry

Flow cytometric analysis of mouse splenocytes with Ptpcr recombinant monoclonal antibody, clone RA3-6B2 (Cat # RAB03287).

Mouse splenocytes were stained with anti-Fluorescein IgG antibody (4-4-20; isotype control- black line) or the r1 version of RAB03287 (blue line) at a dilution of 1:100 for 1h at RT. After washing- bound antibody was detected using a goat anti-mouse IgG AlexaFluor® 488 antibody at a dilution of 1:1000 and cells analyzed using a FACSCanto flow-cytometer.

Specification

Product Description	Rabbit recombinant monoclonal antibody raised against mouse Ptpcr.
Antibody Species	Rabbit
Immunogen	Original antibody is raised against a popliteal lymph node.

Reactivity	Mouse
Form	Liquid
Isotype	IgG kappa
Recommend Usage	Flow Cytometry Immunofluorescence Immunohistochemistry Western Blot The optimal working dilution should be determined by the end user.
Storage Buffer	In PBS (0.02% Proclin 300)
Storage Instruction	Store at 4°C for 3 months. For long term storage store at -20°C. Aliquot to avoid repeated freezing and thawing.

Applications

- Western Blot
- Immunohistochemistry
- Immunofluorescence

Immunofluorescent staining of mouse splenocytes with Ptpcr recombinant monoclonal antibody, clone RA3-6B2 (Cat # RAB03287).

Mouse splenocytes immobilized on Shi-fix™ cover-slips and stained with the chimeric r version of RAB03287 at 10 ug/ml followed by Alexa Fluor® 488 secondary antibody (2 ug/ml)- showing membrane staining. The nuclear stain is DAPI (blue). The isotype control was stained with anti-Fluorescein antibody (3.0) followed by Alexa Fluor® 488 secondary antibody.

- Flow Cytometry

Flow cytometric analysis of mouse splenocytes with Ptpcr recombinant monoclonal antibody, clone RA3-6B2 (Cat # RAB03287).

Mouse splenocytes were stained with anti-Fluorescein IgG antibody (4-4-20; isotype control- black line) or the r1 version of RAB03287 (blue line) at a dilution of 1:100 for 1h at RT. After washing- bound antibody was detected using a goat anti-mouse IgG AlexaFluor® 488 antibody at a dilution of 1:1000 and cells analyzed using a FACSCanto flow-cytometer.

Gene Info — Ptpcr

Entrez GeneID	19264
Gene Name	Ptpcr
Gene Alias	B220, CD45R, Cd45, Ly-5, Lyt-4, T200, loc

Gene Description	protein tyrosine phosphatase, receptor type, C
Gene Ontology	Hyperlink
Gene Summary	receptor type
Other Designations	lymphocyte common antigen