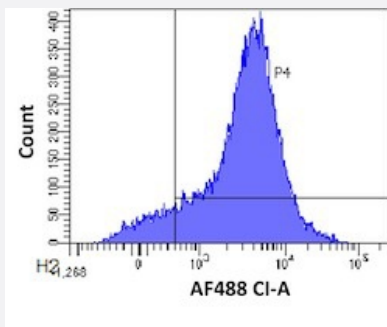


RecomAb™

# CD44 recombinant monoclonal antibody, clone Hermes -3

Catalog # RAB03284      Size 200 ug

## Applications



### Flow Cytometry

Flow cytometric analysis of human lymphocytes with CD44 recombinant monoclonal antibody, clone Hermes -3 (Cat # RAB03284).

Human lymphocytes were stained with an isotype control (3.0- panel A) or the rmeric version of RAB03284 (panel B) at a concentration of 1 ug/ml for 30 mins at RT. After washing- bound antibody was detected using a AF488 conjugated donkey anti-ribody ( and cells analysed on a FACSCanto flow-cytometer.

## Specification

<b>Product Description</b>	Rabbit recombinant monoclonal antibody raised against human CD44.
<b>Antibody Species</b>	Rabbit
<b>Immunogen</b>	Original antibody is raised against purified Hermes-1 antigen from KCA, a human B lymphoblastoid line that binds preferentially to mucosal HEV.
<b>Reactivity</b>	Human
<b>Form</b>	Liquid
<b>Isotype</b>	IgG kappa
<b>Recommend Usage</b>	Blocking ELISA Flow Cytometry Immunocytochemistry Immunofluorescence Immunohistochemistry Western Blot The optimal working dilution should be determined by the end user.

**Storage Buffer**

In PBS (0.02% Proclin 300)

**Storage Instruction**

Store at 4°C for 3 months. For long term storage store at -20°C.  
Aliquot to avoid repeated freezing and thawing.

## Applications

- Western Blot
- Immunohistochemistry
- Immunocytochemistry
- Immunofluorescence
- Enzyme-linked Immunoabsorbent Assay
- Blocking
- Flow Cytometry

Flow cytometric analysis of human lymphocytes with CD44 recombinant monoclonal antibody, clone Hermes -3 (Cat # RAB03284).

Human lymphocytes were stained with an isotype control (3.0- panel A) or the rmeric version of RAB03284 (panel B) at a concentration of 1 ug/ml for 30 mins at RT. After washing- bound antibody was detected using a AF488 conjugated donkey anti-ribody ( and cells analysed on a FACSCanto flow-cytometer.

## Gene Info — CD44

**Entrez GeneID**[960](#)**Gene Name**

CD44

**Gene Alias**

CDW44, CSPG8, ECMR-III, HCELL, IN, LHR, MC56, MDU2, MDU3, MGC10468, MIC4, MUTCH-I, Pgp1

**Gene Description**

CD44 molecule (Indian blood group)

**Omim ID**[107269](#)**Gene Ontology**[Hyperlink](#)

**Gene Summary**

The protein encoded by this gene is a cell-surface glycoprotein involved in cell-cell interactions, cell adhesion and migration. It is a receptor for hyaluronic acid (HA) and can also interact with other ligands, such as osteopontin, collagens, and matrix metalloproteinases (MMPs). This protein participates in a wide variety of cellular functions including lymphocyte activation, recirculation and homing, hematopoiesis, and tumor metastasis. Transcripts for this gene undergo complex alternative splicing that results in many functionally distinct isoforms, however, the full length nature of some of these variants has not been determined. Alternative splicing is the basis for the structural and functional diversity of this protein, and may be related to tumor metastasis. [provided by RefSeq]

**Other Designations**

CD44 antigen|CD44 antigen (homing function and Indian blood group system)|CDW44 antigen|GP90 lymphocyte homing/adhesion receptor|Hermes antigen|antigen gp90 homing receptor|cell adhesion molecule|cell surface glycoprotein CD44|chondroitin sulfate proteoglycan

**Pathway**

- [ECM-receptor interaction](#)
- [Hematopoietic cell lineage](#)

**Disease**

- [Arthritis](#)
- [Breast Neoplasms](#)
- [Cardiovascular Diseases](#)
- [Cleft Lip](#)
- [Cleft Palate](#)
- [Craniofacial Abnormalities](#)
- [Diabetes Mellitus](#)
- [Edema](#)
- [Genetic Predisposition to Disease](#)
- [Head and Neck Neoplasms](#)
- [Heart Defects](#)
- [Hepatitis B](#)
- [Kidney Failure](#)

- [Mouth Abnormalities](#)
- [Neoplasm Recurrence](#)
- [Neoplasms](#)
- [Ovarian Neoplasms](#)