

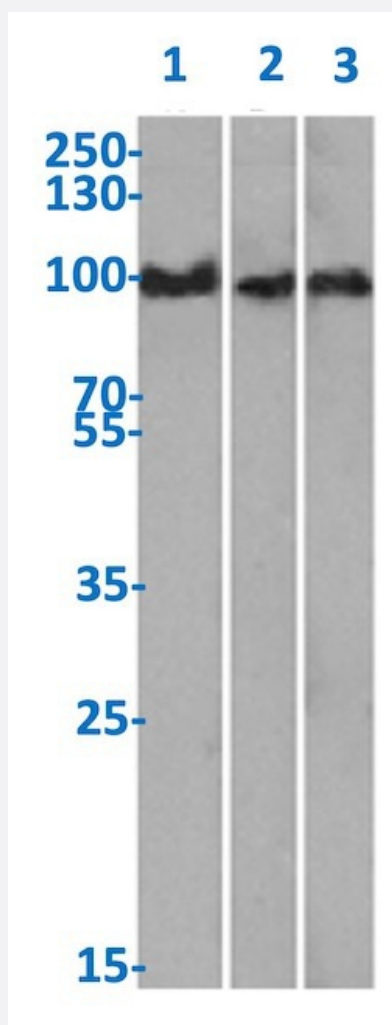
RecomAb™

## SPN recombinant monoclonal antibody, clone 84-3C1

Catalog # RAB03281

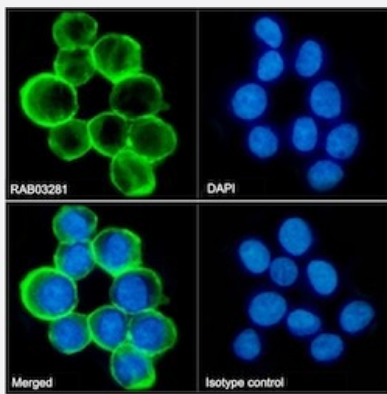
Size 200 ug

### Applications



### Western Blot

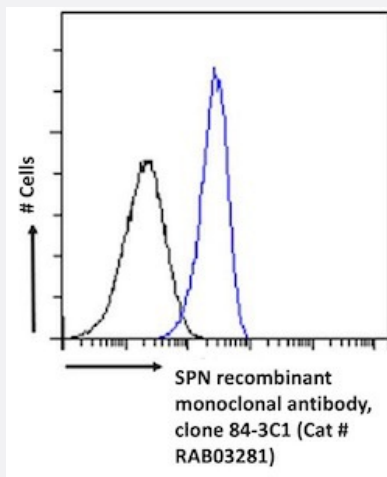
Western blot analysis of Lane 1: Daudi cell lysate, Lane 2: K562 cell lysate and Lane 3: human bone marrow tissue lysate with SPN recombinant monoclonal antibody, clone 84-3C1 (Cat # RAB03281).



## Immunofluorescence

Immunofluorescent staining of K562 cells with SPN recombinant monoclonal antibody, clone 84-3C1 (Cat # RAB03281).

K562 cells on Shi-fix™ coverslips stained with the chimeric r version of RAB03281 at 10 ug/ml for 1h followed by Alexa Fluor® 488 secondary antibody (2 ug/ml)- showing membrane staining. The nuclear stain is DAPI (blue). Panels show from left-right- top-bottom RAB03281- DAPI- merged channels and an isotype control. The isotype control was an unknown specificity antibody (3.0) followed by staining with Alexa Fluor® 488 secondary antibody.



## Flow Cytometry

Flow cytometric analysis of K562 cells with SPN recombinant monoclonal antibody, clone 84-3C1 (Cat # RAB03281).

K562 cells were fixed using 2% PFA and stained with anti-unknown specificity antibody (3.0; isotype control- black line) or the r1 version of RAB03281(blue line) at a dilution of 1:100 for 1h at RT. After washing- the bound antibody was detected using a goat anti-r AlexaFluor® 488 antibody at a dilution of 1:1000 and cells analyzed using a FACSCanto flow-cytometer.

## Specification

<b>Product Description</b>	Rabbit recombinant monoclonal antibody raised against human SPN.
<b>Antibody Species</b>	Rabbit
<b>Immunogen</b>	Original antibody is raised against stimulated human leukocytes.
<b>Reactivity</b>	Human
<b>Form</b>	Liquid
<b>Isotype</b>	IgG kappa
<b>Recommend Usage</b>	Flow Cytometry Immunofluorescence Immunohistochemistry Immunoprecipitation Western Blot The optimal working dilution should be determined by the end user.

**Storage Buffer**

In PBS (0.02% Proclin 300)

**Storage Instruction**

Store at 4°C for 3 months. For long term storage store at -20°C.  
Aliquot to avoid repeated freezing and thawing.

## Applications

- Western Blot

Western blot analysis of Lane 1: Daudi cell lysate, Lane 2: K562 cell lysate and Lane 3: human bone marrow tissue lysate with SPN recombinant monoclonal antibody, clone 84-3C1 (Cat # RAB03281).

- Immunohistochemistry

- Immunofluorescence

Immunofluorescent staining of K562 cells with SPN recombinant monoclonal antibody, clone 84-3C1 (Cat # RAB03281). K562 cells on Shi-fix™ coverslips stained with the chimeric r version of RAB03281 at 10 ug/ml for 1h followed by Alexa Fluor® 488 secondary antibody (2 ug/ml)- showing membrane staining. The nuclear stain is DAPI (blue). Panels show from left-right-top-bottom RAB03281- DAPI- merged channels and an isotype control. The isotype control was an unknown specificity antibody (3.0) followed by staining with Alexa Fluor® 488 secondary antibody.

- Immunoprecipitation

- Flow Cytometry

Flow cytometric analysis of K562 cells with SPN recombinant monoclonal antibody, clone 84-3C1 (Cat # RAB03281). K562 cells were fixed using 2% PFA and stained with anti-unknown specificity antibody (3.0; isotype control- black line) or the r1 version of RAB03281(blue line) at a dilution of 1:100 for 1h at RT. After washing- the bound antibody was detected using a goat anti-r AlexaFluor® 488 antibody at a dilution of 1:1000 and cells analyzed using a FACSCanto flow-cytometer.

## Gene Info — SPN

**Entrez GeneID**
[6693](#)
**Gene Name**

SPN

**Gene Alias**

CD43, GPL115, LSN

**Gene Description**

sialophorin

**Omim ID**
[182160](#)
**Gene Ontology**
[Hyperlink](#)

**Gene Summary**

Sialophorin (leukosialin) is a major sialoglycoprotein on the surface of human T lymphocytes, monocytes, granulocytes, and some B lymphocytes, which appears to be important for immune function and may be part of a physiologic ligand-receptor complex involved in T-cell activation.[supplied by OMIM]

**Other Designations**

leukosialin|sialophorin (gpL115, leukosialin, CD43)|sialophorin (leukosialin, CD43)

**Pathway**

- [Cell adhesion molecules \(CAMs\)](#)

**Disease**

- [Kidney Failure](#)