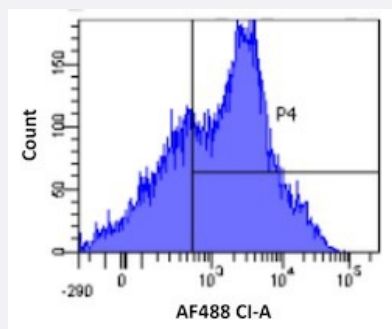


RecomAb™

CD38 recombinant monoclonal antibody, clone HB7

Catalog # RAB03247 Size 200 ug

Applications



Flow Cytometry

Flow cytometric analysis of human lymphocytes with CD38 recombinant monoclonal antibody, clone HB7 (Cat # RAB03247).

Human lymphocytes were stained with an isotype control (3.0- panel A) or the rmeric version of RAB03247 (panel B) at a concentration of 1 ug/ml for 30 mins at RT. After washing- bound antibody was detected using a AF488 conjugated donkey anti-ribody (and cells analysed on a FACSCanto flow-cytometer.

Specification

Product Description	Rabbit recombinant monoclonal antibody raised against human CD38.
Antibody Species	Rabbit
Immunogen	Original antibody is raised against viable cells of the human cell line BJAB (Human Burkitt lymphoma B cell line).
Reactivity	Human
Form	Liquid
Isotype	IgG
Recommend Usage	Flow Cytometry Western Blot The optimal working dilution should be determined by the end user.
Storage Buffer	In PBS with 0.02% Proclin 300
Storage Instruction	Store at 4°C for up to 3 months. For longer storage, aliquot and store at -20°C. Aliquot to avoid repeated freezing and thawing.

Applications

- Western Blot
- Flow Cytometry

Flow cytometric analysis of human lymphocytes with CD38 recombinant monoclonal antibody, clone HB7 (Cat # RAB03247). Human lymphocytes were stained with an isotype control (3.0- panel A) or the rmeric version of RAB03247 (panel B) at a concentration of 1 ug/ml for 30 mins at RT. After washing- bound antibody was detected using a AF488 conjugated donkey anti-ribod (and cells analysed on a FACSCanto flow-cytometer.

Gene Info — CD38

Entrez GeneID	952
Gene Name	CD38
Gene Alias	T10
Gene Description	CD38 molecule
Omim ID	107270
Gene Ontology	Hyperlink
Gene Summary	CD38 is a novel multifunctional ectoenzyme widely expressed in cells and tissues especially in leukocytes. CD38 also functions in cell adhesion,signal transduction and calcium signaling. [provided by RefSeq
Other Designations	ADP-ribosyl cyclase/cyclic ADP-ribose hydrolase CD38 antigen CD38 antigen (p45) cyclic ADP-ribose hydrolase

Pathway

- [Calcium signaling pathway](#)
- [Hematopoietic cell lineage](#)
- [Metabolic pathways](#)
- [Nicotinate and nicotinamide metabolism](#)

Disease

- [Cell Transformation](#)
- [Child Development Disorders](#)
- [Diabetes Mellitus](#)
- [Genetic Predisposition to Disease](#)
- [Leukemia](#)
- [Lupus Erythematosus](#)
- [Lymphoma](#)
- [Osteoporosis](#)